

EOS1000AW

Weather Wise.

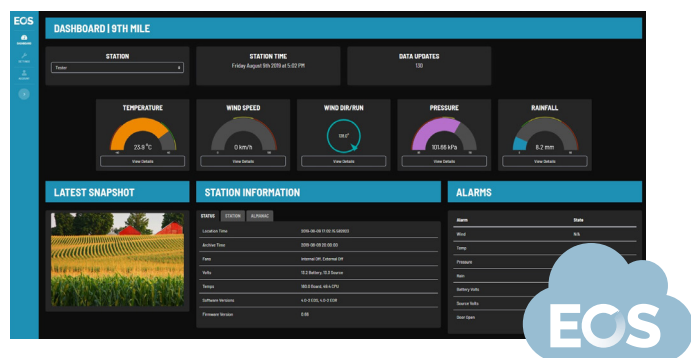
- Sensors to provide crucial up to the second environmental information.
- Includes alarms to alert frost warning.
- Can be used for predictive pest control along with wind data to enable strategic spraying operations.



EOS1000AW

This EOS system was developed for the agricultural sectors. As such, all the important sensors to monitor the environment are included in the system EOS-1000AW.

The EOS-1000AW includes the standard capability, as well as additional sensors to provide crucial up to the second environmental information, and alarms to alert frost warning. In an agricultural application, temperature, humidity, and dewpoint data from EOS-1000AW can be used for predictive pest control along with wind data to enable strategic spraying operations. Localized temperature, wind, and solar data can be used to accurately predict frost conditions.



FEATURES

- Compact and modular hardware
- High grade stainless steel and ABS composite hardware
- Easy accessible sensors and local LCD readout
- Tamper alert sensor
- Daily local backup
- NOAA report generation
- Alarm notifications
- AWEKAS and Weather Underground compatible

POWER OPTIONS:

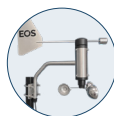
- AC/DC Passive PoE
- Battery / solar / wind generator

COMMUNICATIONS:

- Ethernet
- Wifi
- LTE / 4G



ON BOARD SENSORS



WU250

Our standard wind speed and direction unit.



TPU50

This standard module provides temperature, humidity, and pressure readings.



RU11

Optical rain sensor that senses water hitting the outside surface.



SU40

Our solar module measures solar luminosity and radiation levels.



LM10

Our leaf wetness sensor lets you know leaf wetness in no uncertain terms.

OPTIONAL SENSORS



RU12

High-accuracy tipping style rain bucket.



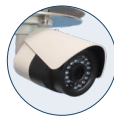
WU350

Our digital high precision ultrasonic wind speed and direction sensor.



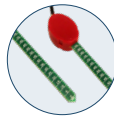
SU50

The SU50 has the added capability to collect UV-A (240nm~ 370nm) data.



CAMERA

A camera that provides real time visual reference and discourages vandalism or unauthorized tampering.



S025

Our soil moisture module provides VWC (Volume metric Water Content) data.



ESOIL-100

An advanced wireless soil moisture sensor for autonomous service, allowing remote access and frost warnings to data on your digital devices.

EOS1000

Weather Wise.

- Instant, accurate weather data.
- Cloud-based interface for desktop and mobile access.
- True IoT integration.
- Localized frost warnings.
- Archived historical data via optional EOS Cloud.



EOS1000

The EOS-1000 is an advanced all-in-one weather station, which collects and remotely displays environmental data from multiple high precision sensors.

An on-board Linux-based processor stores data, which can be viewed online or uploaded to a remote customer database. Optionally, we offer data storage and viewing via our secure EOS Cloud.

All external components are made from the highest quality UV-stabilized ABS, high-grade aluminum, and stainless steel. The optional LTE cellular interface allows users to collect data from remote locations such as agricultural sites, highways, energy sites (re-usable) or any other site which lacks a reliable internet connection.

Built-in sensors monitor the health of EOS-1000 to display battery condition and internal temperature. The unit has a tamper alarm to provide an alert when the housing has been accessed.

A high resolution all-weather webcam can be added for visual reference of weather conditions and other useful images from the site.

Our modular concept provides the ability to create a system that meets the customers requirements. Data from multiple sensors are connected to the DCU unit. The data from these sensors will be uploaded in real time to the EOS cloud and will also be stored in a local database as well as a local backup

In addition to environmental data, the EOS system collects data such as battery voltage, door status (tamper contact), and internal temperature. Several spare analog channels can be used for non standard, or customer supplied sensors.

Inside the EOS1000 housing is a small LCD display. This display provides all vital information that might be needed to set up the station or obtain data to troubleshoot when no computer is present. Inside the same housing there is a small lithium battery to provide power for three hours in case of a power failure.

The SD slot contains the card with the Linux operating system. This allows a quick and easy swap out for upgrades and troubleshooting. The USB connection is used for the backup storage device. All data is backup on this USB mass storage. Ample space is available to add additional modules such as a camera module and a 3G/4G modem.

With many power and communication options, the EOS stations can be installed at multiple locations.

COMMERCIAL SERIES

EOS1000CR

The EOS-1000CR is the ideal system to reliably monitor rapidly changing road conditions.

EOS1000CE

The EOS-1000CE was designed for use at seasonal recreational operations.

EOS1000CA

The EOS-1000CA has all the sensors needed for building automation. Connects directly to a BACnet data network.

AGRICULTURE SERIES

EOS1000AW

This agricultural sensor suits monitors environmental changes for wet climate crops, including timely frost warnings.

EOS1000AD

Climate change and evolving weather patterns create more uncertainty for dry climate crops. This suite with the ES0IL-100 provides all the info for farmers to make the right decision on when to spray.

EOS1000AA

With compact size and durable hardware, the EOS-1000AA is ideal for the punishing coastal environments found in aquaculture applications.

ESOIL100

The ES0IL-100's advanced wireless soil moisture sensor allows for real time soil monitoring.

MARINE SERIES

EOS1000MR

The EOS-1000MR is a complete marine weather observation system providing accurate, real-time environmental data to commercial mariners.

EOS1000MS

Our shore-based EOS-1000MS is ideal for coastal wind and tidal monitoring.

EOS600MR

Our EOS-600 wind anemometer is made from high grade stainless steel and composite acetal, and ensures reliable and accurate readings for both wind speed and direction.