

5 Mill Run Trail, Moirs Mill



Trailhead: 920 Bedford Hwy

Terrain and Surface: This 700 m trail is a combination of gravel trail and sidewalks connecting green spaces

Parking/Bus Route: Parking lot at Moirs Mill (920 Bedford Hwy). Bus Route 80 at Moirs Mill Rd on Bedford Hwy.

Description: This family-friendly woodland trail behind the historic Moirs Mill runs alongside the outflow from Paper Mill Lake and to the dam. Return is same, or a walk through the neighbourhood.

6 Old Coach Road Trail, The Ravines



Trailhead: 76 Southgate Dr.

Terrain and Surface: This 1 km crusher dust trail with some slopes winds through the Bedford Ravines neighbourhood. A short boardwalk crosses a cascading brook.

Parking/Bus Route: Parking on Southgate Dr or Vanier Way; Bus Routes 80 at Southgate Dr on Bedford Hwy.

Description: Discover this historic route once travelled by coaches to Bedford and beyond. Enjoy the interpretive panel and a copy of the trail guide at the trailhead.

7 Cabin Lake Trail, Royale Hemlocks



Trailhead: 42 Starboard Dr.

Terrain and Surface: This 2.5 km crusher dust trail has some steep slopes.

Parking/Bus Route: Parking on Starboard Dr or Transom Dr; Bus Routes 81, 90

Description: This family-friendly woodland trail features a small lake popular in winter for skating.

8 Fleetview Trail, Royale Hemlocks



Trailhead: 41 Starboard Dr

Terrain and Surface: This 650 m gravel trail is steep in places and winds past small ponds and woods.

Parking/Bus Route: Parking on Starboard Dr; Bus Routes 81, 90

Description: This woodland trail connects behind the homes on Fleetview in Royale Hemlocks and connects across Starboard to Cabin Lake Trail.

9 Hemlock Ravine Park Trails



Trailhead: 40 Kent Ave or Julies Walk

Terrain and Surface: Within the park are 4 km of looped, crusher dust trails, one of which is available for off-leash dog walking. Most of the trails are fairly level, with only one trail having a steep section.

Parking/Bus Route: Parking lot at Kent Ave or on Julies Walk; Bus Routes 80, 81, 90 at Kent Ave on Bedford Hwy.

Description: This 200 acre parkland was part of the estate of John Wentworth, 2nd Lieut. Governor of Nova Scotia, and used by Prince Edward and his companion Julie in the late 1700's. This is a great park for family wildlife viewing, geocaching, or just sitting by the heart-shaped pond!

Halifax North West Trails Association

is a volunteer community group working with community partners to plan, construct, maintain, and steward trails in our neighbourhoods.

Trails Connect Neighbourhoods

Walking is a great activity; improving our physical, mental, and social health. The setting is never static, the costs are minimal, and age is no limitation. Children, youth, and their families can benefit from outdoor learning activities. With more knowledge and the love of nature we can be better stewards of our environment.

Trails are a vibrant part of our multicultural communities. **Halifax North West Trails Association (HNWTA)** invites you to be a part of the green force committed to leaving a legacy for future generations.

Volunteers are always welcome!



Do what Canadians love to do most—experience the great outdoors in all seasons!



Trails Map

Trails are located in Fairview, Clayton Park, Rockingham, and Bedford.

1 Belchers Marsh Park Trails, Clayton Park West



Trailhead: 445 Parkland Dr (Marsh) and 590 Parkland Dr (Pond)

Terrain and Surface: This 2.5 km crusher dust trail is quite level, with a street crossing at Parkland Dr.

Parking/Bus Route: Parking is available on Parkland Dr and nearby side streets; Bus Routes 30, 39 on Parkland Dr.

Description: These natural trails loop around a large marsh and smaller pond across Parkland. Two interpretive panels describe natural and cultural assets near the raised look-off. Family activities include observing flora and fauna from spring to fall, and skating and snowshoeing in the winter.

2 Mainland Common Loop Trail, Clayton Park West



Trailhead: 69 Westridge Dr, top of Main Ave, and from the Mainland North Trail.

Terrain and Surface: This is a 1 km level woodland walk on bark chips with a short boardwalk.

Parking/Bus Route: Trailhead parking at the top of Westridge Dr; Bus Route 2 on Willet St at Westridge Dr, 28 on Washmill Lake Dr.

Description: A natural trail in the passive recreation area with an interpretive panel overlooking the sensitive bog area where you can spot two Provincial flowers: Nova Scotia's Mayflower and Newfoundland and Labrador's Pitcher Plant!

3 Mainland North Trail, Clayton Park West/ Mount Royale



Trailhead: Many neighbourhood access points; main on Parkland Dr. or Main Ave.

Terrain and Surface: This 4.5 km crusher dust trail has several gradual slopes and winter maintenance.

Parking/Bus Route: Street parking by trailheads, handicapped parking on Westridge Dr; Bus Routes 30 on Parkland Dr and 2 on Dunbrack St at Main Ave.

Description: This active transportation trail connects many assets in the community. Side trails and connecting streets lead to neighbourhoods and green spaces. Watch for traffic at crossroads. Extends from Parkland Dr in Glenbourne to Ramsbrook Ct in Mount Royale.

4 Geizer Hill Trail, Mount Royale/Clayton Park West



Trailhead: Greenpark Close. Alternate entrance on Washmill Lake Dr.

Terrain and Surface: This 700 m crusher dust trail has some steep slopes and has a bridge over a brook.

Parking/Bus Route: Parking on Greenpark Close; Bus Routes 30 on Regency Park Dr and 28 on Washmill Lake Dr.

Description: This short natural wooded linear trail between apartment towers connects residents on a green route to Bayers Lake Business Park.

Mainland North Trail is the only trail with winter maintenance 2019– Transit routes accurate as of time of printing



hnwta.communications@gmail.com



www.halifaxnorthwesttrails.ca



Halifax North West Trails Association (@HNWTA)

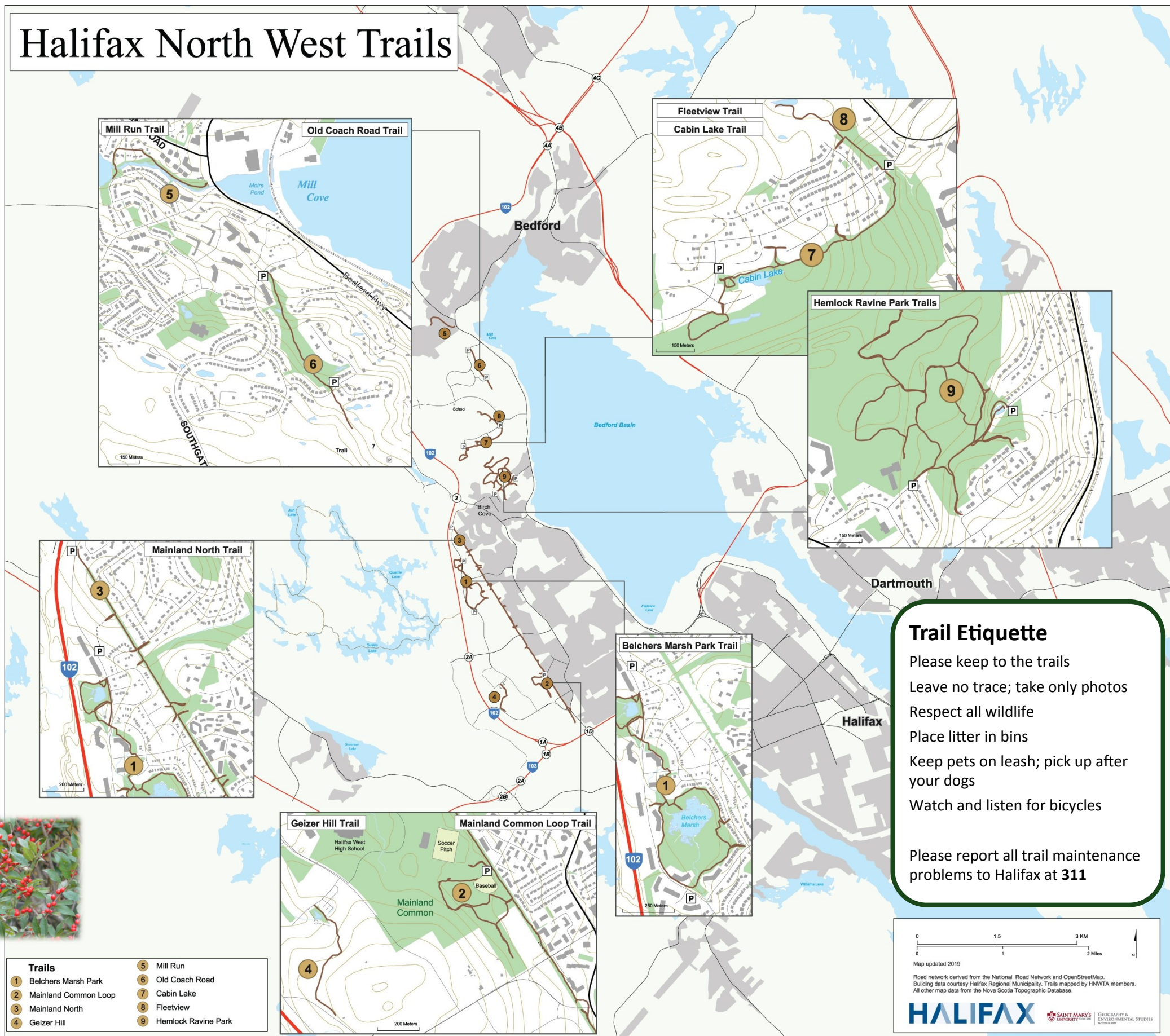


@HNWTA_comm

The **Halifax North West Trails Association** is one of many volunteer community trail groups in Halifax. We support the use of trails in Fairview, Clayton Park, Rockingham, Bedford South, and the Blue Mountain-Birch Cove Lakes Wilderness Area. Our trails offer a variety of outdoor experiences for cycling and walking commuters, casual urban walkers, nature enthusiasts, and hikers who enjoy a path in the woods. Many of the trails pass through historic areas connected with the ongoing development of Halifax and pass near brooks, wetlands, and woodlands where numerous flora and fauna can be found.



Visit our Kiosk
at the Canada Games Centre



Trail Etiquette

Please keep to the trails
Leave no trace; take only photos
Respect all wildlife
Place litter in bins
Keep pets on leash; pick up after your dogs
Watch and listen for bicycles

Please report all trail maintenance problems to Halifax at **311**

Watch for trailhead signs to help locate the trails.

All trails are dogs on-leash.

For more information about trails and outdoor activities in Halifax and in Nova Scotia, visit these great websites!

Regional Trail Maps:
halifax.ca/trails

Provincial Trails Organization:
nstrails.com

Hiking Information:
hikenovascotia.ca

Municipal Recreation Opportunities:
halifax.ca/recreation

Search "hiking" at:
ns.211.ca

Halifax Regional Trails Association (links to local community trail groups):
hrta.ca/wp/members

Nature Nova Scotia
naturens.ca

Geocaching Information:
geocaching.com

Cycling Information:
bicycle.ns.ca

Nordic Walking Nova Scotia
nordicwalkingnovascotia.ca

Meetup Walking Groups:
meetup.com/topics/walkers/ca/ns/Halifax/

Learn about causes that we support:

Proposed Blue Mountain Birch Cove Lakes Regional Park:
bluemountainfriends.ca

Sandy Lake Regional Park:
sandylake.org



Scan here to visit our website and learn more, find detailed maps, or become a member!

