



***basyx*[™] Seating Fabrics**



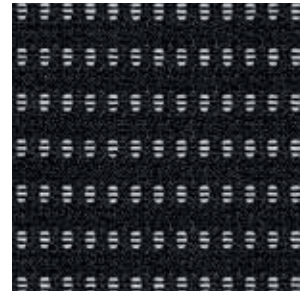
EN11 Black Vinyl



LH10 Black Fabric



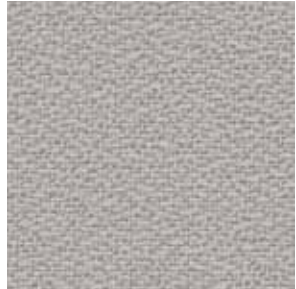
MM10 Black Sandwich Mesh Fabric



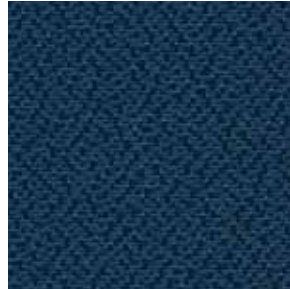
MST1 Black Mesh



NW10 Black Fabric



NW35 Fabric Graystone



NW90 Navy Fabric



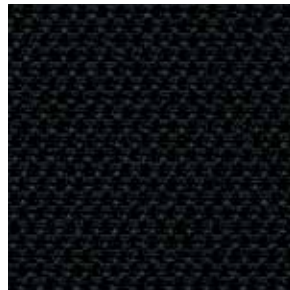
SB11 Black Leather



SP11 Black Leather



ST11 Black Leather



VA10 Black Fabric



VA19 Charcoal Fabric



VA62 Burgundy Fabric



VA90 Navy Fabric



VB10 Black Fabric



VC10 Black Fabric



SB45 Brown Vinyl

Fabric Specifications

Fabric Code	HVL103	HVL105	HVL131	HVL151	HVL161	HVL171	HVL210	HVL220	HVL251	HVL258	HVL301	HVL302	HVL303	HVL402	HVL443	HVL506	HVL511	HVL516	HVL521	HVL531	HVL532	HVL541	HVL551	HVL552
EN11 Black Vinyl			■																					
LH10 Black Fabric																	■					■		
MM10 Black Sandwich Mesh Fabric							■				■	■	■			■		■		■	■			
MST1 Black Mesh																								■
NW10 Black Fabric									■	■														
NW35 Graystone Fabric									■	■														
NW90 Navy Fabric									■	■														
SB11 Black Leather	■	■		■	■	■														■				
SB45 Brown Vinyl														■										
SP11 Black Leather																								
ST11 Black Leather																								
VA10 Black Fabric								■											■					
VA19 Charcoal Fabric																								
VA62 Burgundy Fabric																								
VA90 Navy Fabric																								
VB10 Black Fabric																							■	
VC10 Black Fabric															■									
VM10 Black Mesh Fabric																								

Fabric Code	HVL573	HVL601	HVL604	HVL606	HVL610	HVL616	HVL636	HVL641	HVL643	HVL653	HVL685	HVL691	HVL693	HVL701	HVL702	HVL705	HVL712	HVL721	HVL844	HVL852	HVL853	HVL870	HVL880	HVL890
EN11 Black Vinyl																								
LH10 Black Fabric																		■						
MM10 Black Sandwich Mesh Fabric															■		■							
MST1 Black Mesh																								
NW10 Black Fabric																								
NW35 Graystone Fabric																								
NW90 Navy Fabric																								
SB11 Black Leather			■	■		■	■			■	■												■	
SB45 Brown Vinyl																								
SP11 Black Leather												■	■						■		■			
ST11 Black Leather		■						■	■					■						■		■		■
VA10 Black Fabric		■		■	■	■	■																	
VA19 Charcoal Fabric		■		■	■	■																		
VA62 Burgundy Fabric		■																						
VA90 Navy Fabric		■		■	■	■																		
VB10 Black Fabric	■																							
VC10 Black Fabric																								
VM10 Black Mesh Fabric																■								

Fabric Specifications

EN11 – Black Vinyl

Specify for model HVL131 only

LH10 – Black Fabric

Specify for model HVL721 only

Stain Resistance: N/A

Backing: N/A

Additional Data

Breaking strength: Warp – C 236lbs; Filling – C 236lbs

Cleaning Code: N/A

MM10 – Black Sandwich Mesh Fabric

Specify for model HVL210, HVL531, HVL532 only

Stain Resistance: N/A

Backing: N/A

Additional Data

Cleaning Code: W. Clean only with water-based shampoo or foam upholstery cleaner. Do not over wet. Do not use solvents to spot clean. Pile fabrics may require brushing to restore appearance. Cushion covers should not be removed and laundered.

MST1 – Black Mesh

Specify for model HVL552 only

Stain Resistance: N/A

Backing: N/A

Additional Data

Resistance to yarn slippage: Warp – 86.4lbf; Filling – 100.1lbf

Breaking strength: Warp – 318.1lbf; Filling – 235.6lbf

NW10 – Black fabric

Specify for models HVL251 & HVL258 only

Stain Resistance: N/A

Backing:

Fabric Content: 100% Polyester

Abrasion: >50,000 double rubs

Lightfastness: Grade 4-5

Additional Data

Crocking: Grade 4-5

Resistance to yarn slippage: Warp – 15mm; Filling – 8mm

Breaking strength: Warp – >2000N; Filling – >1500N

Cleaning Code: SW

NW35 – Ash Fabric

Specify for models HVL251 & HVL258 only

Stain Resistance: N/A

Backing: N/A

Fabric Content: 100% Polyester

Abrasion: >50,000 double rubs

Lightfastness: Grade 4-5

Additional Data

Crocking: Grade 4-5

Resistance to yarn slippage: Warp – 15mm; Filling – 8mm

Breaking strength: Warp – >2000N; Filling – >1500N

Cleaning Code: SW

NW90 – Navy Fabric

Specify for models HVL251 & HVL258 only

Stain Resistance: N/A

Backing:

Fabric Content: 100% Polyester

Abrasion: >50,000 double rubs

Lightfastness: Grade 4-5

Additional Data

Crocking: Grade 4-5

Resistance to yarn slippage: Warp – 15mm; Filling – 8mm

Breaking strength: Warp – >2000N; Filling – >1500N

Cleaning Code: SW

SB11 – Black Leather

Specify for models HVL151/531 only

Stain Resistance: N/A

Backing: N/A

Additional Data

Resistance to yarn slippage: Warp – C 20lbs; Filling – C 25lbs

Cleaning Code: X. Do not clean with either water- or solvent-based cleaner. Use vacuuming or light brushing only.

Specify for models HVL653/HVL685 only

Stain Resistance: N/A

Backing: N/A

Additional Data

Resistance to yarn slippage: N/A

Cleaning Code: Wipe with a clean cloth damped with a mild upholstery detergent solution.

A soft bristle brush may be used to remove ingrained soil.

Use only leather care products suitable for top coated leather.

Spot clean as above.

Treat spills and stains as soon as possible.

Persistent stains may require treatment by a professional cleaner.

Allow to dry thoroughly before reuse.

SP11 – Black Leather

Specify for models HVL693 only

Stain Resistance: N/A

Backing: N/A

Additional Data

Resistance to yarn slippage: N/A

Specify for model HVL853 only

Stain Resistance: N/A

Backing: N/A

Additional Data

Resistance to yarn slippage: N/A

ST11 – Black Leather

Specify for models HVL601/643 only

Stain Resistance: N/A

Backing: polyester-mixed cotton cloth+leather powder

Abrasion: >30,000 double rubs

Lightfastness: ≥Grade 4

Additional Data

Crocking: Wet ≥4 Grade ; Dry ≥4 Grade

Resistance to yarn slippage: Warp – N/A; Filling – N/A

Breaking strength: ≥200N (GB/T8948-2008)

Cleaning Code: common cleaner

Specify for model HVL701 only

Stain Resistance: N/A

Backing: N/A

Lightfastness: 4-5 (ISO 105:B02, IUF 402)

Additional Data

Crocking: Wet 4 ; Dry 4

Resistance to yarn slippage: A direction average value 23.86 kgf; B direction average value 23.32 kgf (Tear strength test, ASTM D2212-00)

Breaking strength: A direction average value 5714.38 lbf/in2; B direction average value 5643.46 lbf/in2 (Tensile Strength, ASTM D2209-00)

Cleaning Code: W

Specify for HVL852 only

Stain Resistance: N/A

Backing: N/A

Lightfastness: N/A

Additional Data

Crocking: Wet 50 ; Dry 50

Resistance to yarn slippage: Warp – ; Filling – N/A

Breaking strength: 50N

Cleaning Code: N/A

Fabric Specifications

VA10 – Black Fabric

Specify for model HVL220, HVL521, HVL601, HVL606, HVL610, HVL616, HVL636, HVL641, HVL643 only

Stain Resistance: N/A

Backing: N/A

Lightfastness: Grade 5

Additional Data

Cleaning Code: X. Do not clean with either water- or solvent-based cleaner. Use vacuuming or light brushing only.

Specify for model HVL601 only

Stain Resistance: NA

Backing: N/A

Lightfastness: Grade 4-5

Additional Data

Cleaning Code: SW

Specify for model HVL606/616/636 only

Stain Resistance: N/A

Backing: N/A

Lightfastness: N/A

Additional Data

Cleaning Code: Wipe with a clean cloth dampened with a mild upholstery detergent solution.
A soft bristle brush may be used to remove ingrained soil.
Spot clean as above.
Treat spills and stains as soon as possible.
Persistent stains may require treatment by a professional cleaner.

VA19 – Charcoal Fabric

Specify for model HVL601, HVL606, HVL610, HVL616 only

Stain Resistance: N/A

Backing: N/A

Lightfastness: N/A

Additional Data

Cleaning Code: Wipe with a clean cloth dampened with a mild upholstery detergent solution.
A soft bristle brush may be used to remove ingrained soil.
Spot clean as above.
Treat spills and stains as soon as possible.
Persistent stains may require treatment by a professional cleaner.

VA62 – Burgundy Fabric

Specify for model HVL601 only

Stain Resistance: N/A

Backing: N/A

Lightfastness: N/A

Additional Data

Cleaning Code: Wipe with a clean cloth dampened with a mild upholstery detergent solution.
A soft bristle brush may be used to remove ingrained soil.
Spot clean as above.
Treat spills and stains as soon as possible.
Persistent stains may require treatment by a professional cleaner.

VA90 – Navy Fabric

Specify for model HVL601, HVL606, HVL610, HVL616 only

Stain Resistance: N/A

Backing: N/A

Lightfastness: N/A

Additional Data

Cleaning Code: Wipe with a clean cloth dampened with a mild upholstery detergent solution.
A soft bristle brush may be used to remove ingrained soil.
Spot clean as above.
Treat spills and stains as soon as possible.
Persistent stains may require treatment by a professional cleaner.

VB10 – Black Fabric

Specify for model HVL551, HVL573 only

Stain Resistance: N/A

Backing: N/A

Lightfastness: 4.5

Additional Data

Cleaning Code: W

VC10 – Black Fabric

Specify for model HVL443 only

Stain Resistance: No

Backing: N/A

Lightfastness: 20 hours (grade 4)

Additional Data

Cleaning Code: Wipe with a clean cloth dampened with a mild upholstery detergent solution.
A soft bristle brush may be used to remove ingrained soil.
Spot clean as above.
Treat spills and stains as soon as possible.
Persistent stains may require treatment by a professional cleaner.

VM10 – Black Mesh Fabric

Specify for model HVL573 only



The HON Company
200 Oak Street
Muscatine, IA 52761
800.833.3964
hon.com