

Knoll

A modern office environment with white desks, ergonomic chairs, and two people working. The office has large windows in the background, and the desks are equipped with computers, keyboards, and mice. The chairs are black with red seats and mesh backs. The overall atmosphere is bright and professional.

2016

ESSENTIALS
for your workplace

knoll.com/essentials

Every place is a workplace.

In today's more collaborative offices, work can take place anywhere. That's why Knoll offers workplace essentials that inspire people to do their best work—for both primary work areas and shared activity spaces. Most are ready to install in just four weeks. Connect with your Knoll dealer to get started.

Learn more at knoll.com/essentials

Get Inspired: WORKPLACE ESSENTIALS

Activity Spaces 2–33

Primary Work Areas 34–61

Private Offices 52–61

Start Planning: PRODUCT INDEX

Seating & Lounge 64–71

Tables 72–79

Storage 80–83

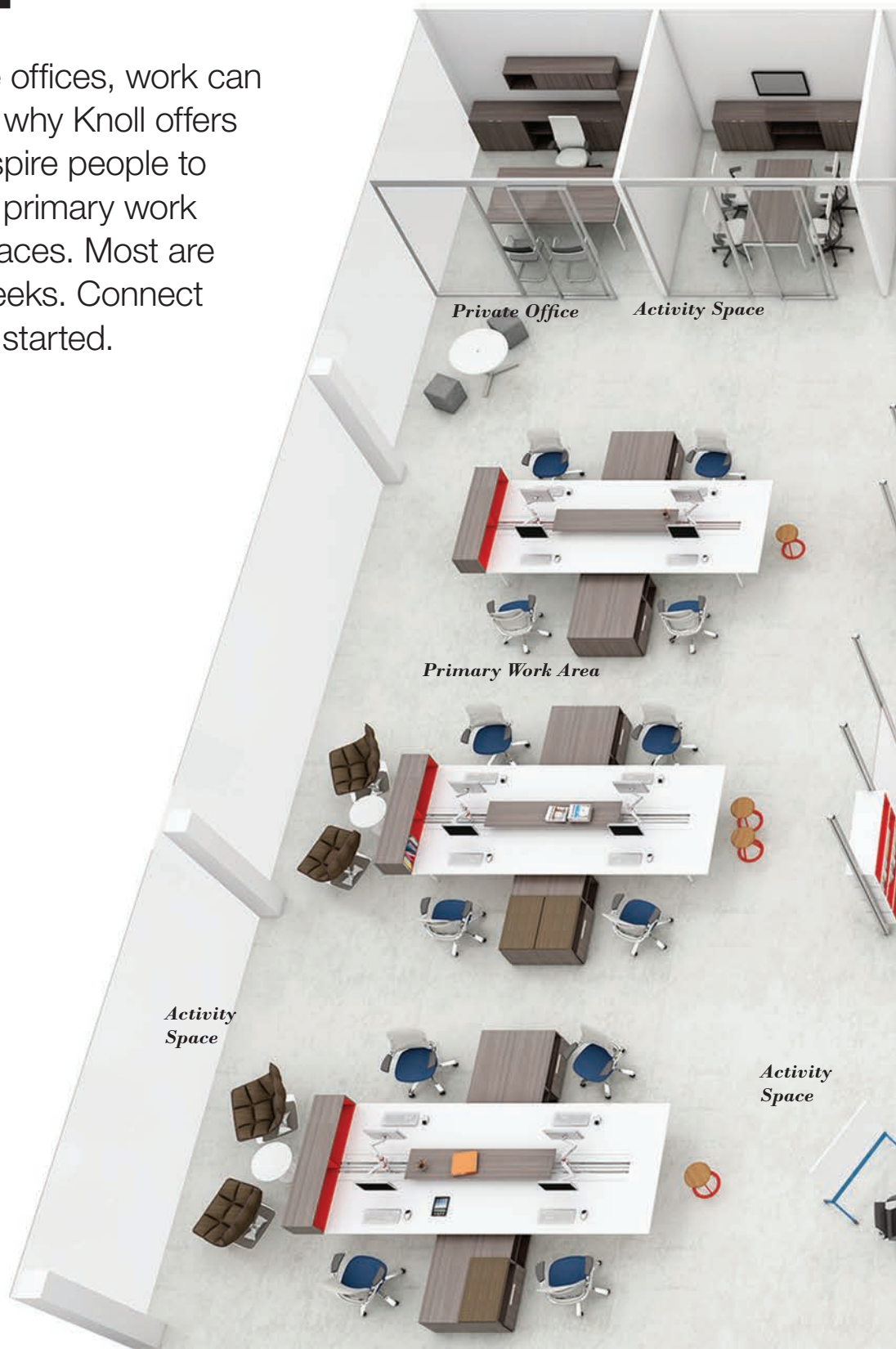
Enhanced Power & Data 84–85

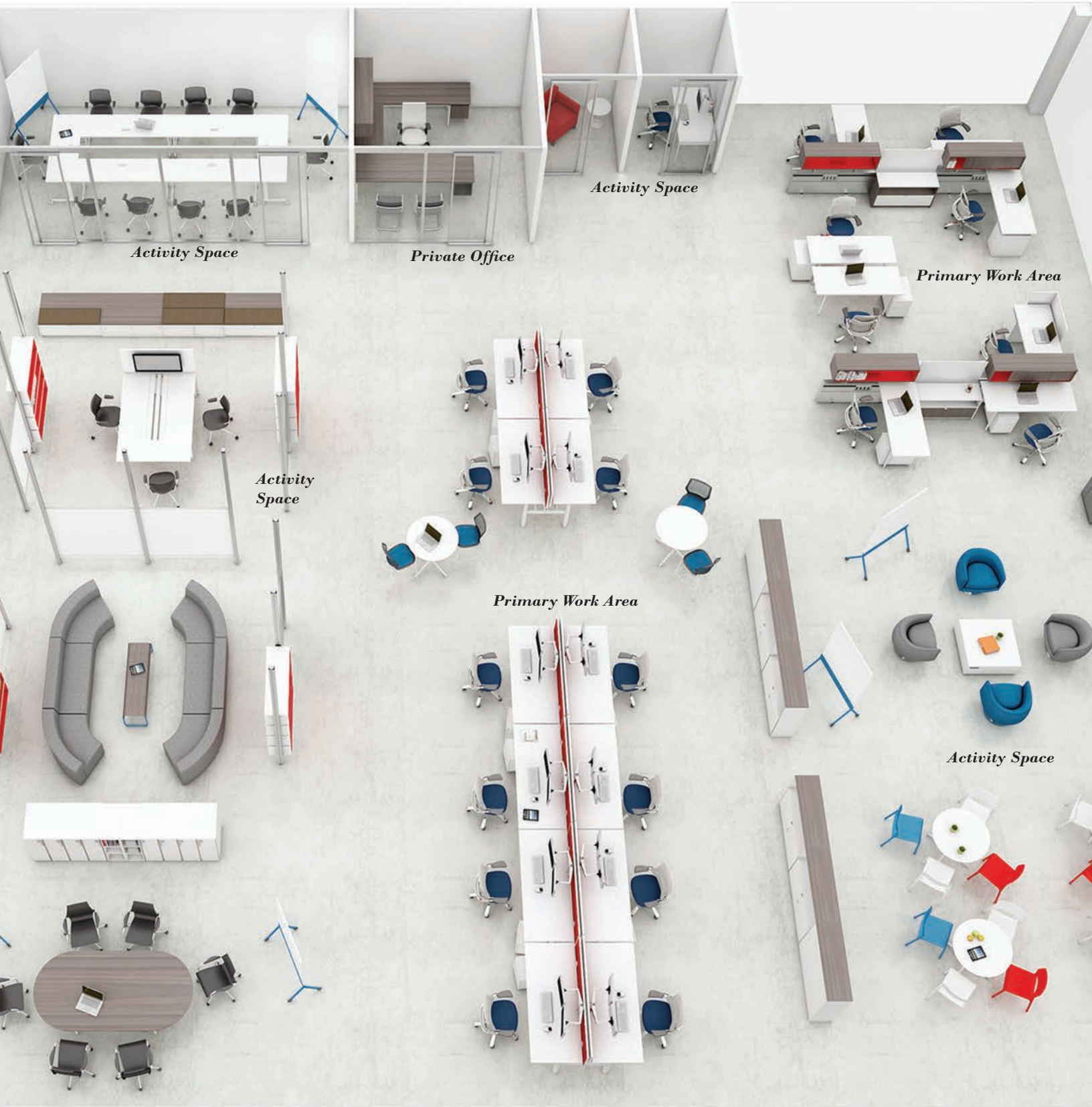
Work Tools 86–91

KnollTextiles & Finishes 92–101

Program Exceptions Summary 102

Sustainability Information 103





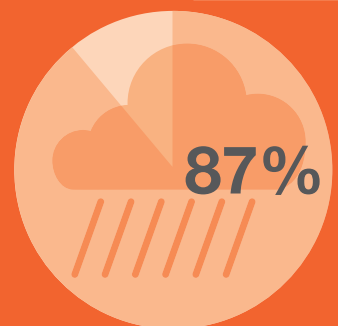
Activity Spaces

Today, technology allows work to take place wherever people work best. Group and private activity spaces make the most of this new reality by encouraging creativity and collaboration, and letting people choose how they work, meet and interact.

The Social Office: A Strategic Tool for Attracting and Retaining Talent

Why do people who can work almost anywhere choose to come into the office? They want to be connected. Knoll research shows that workers prefer to interact face-to-face, where they can feel engaged and collaborate in planned and spontaneous ways.

THE WAR FOR TALENT



The Majority of Work Today is Knowledge Work

The nature of this work is highly collaborative and social, and happens in a wide range of locations beyond the primary workspace. It requires flexibility and necessitates ease of transitions.

**ALMOST HALF
OF ALL WORK**
occurs outside the primary workspace.

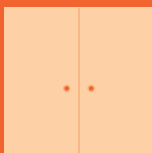
Even when employees are at their
desk, the average amount of time
spent on the computer is only about
**2.5 HOURS PER
DAY.**

On average, workers spend
ONLY 11 MINUTES
on any given task before switching to
a different one or being interrupted.

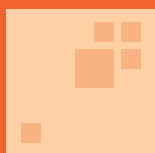


Creating Collaborative Spaces that Work

According to Knoll research, successful activity spaces include **technology access**, **privacy** and **proximity** to other workers, as well as a **variety of sizes** and a **welcoming, casual feel**.



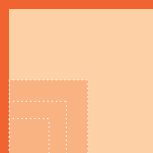
PROXIMITY



PRIVACY



TECHNOLOGY
is the key feature of
highly used collaborative
spaces.



**VARIETY OF
SIZES**



**CASUAL
FEEL**



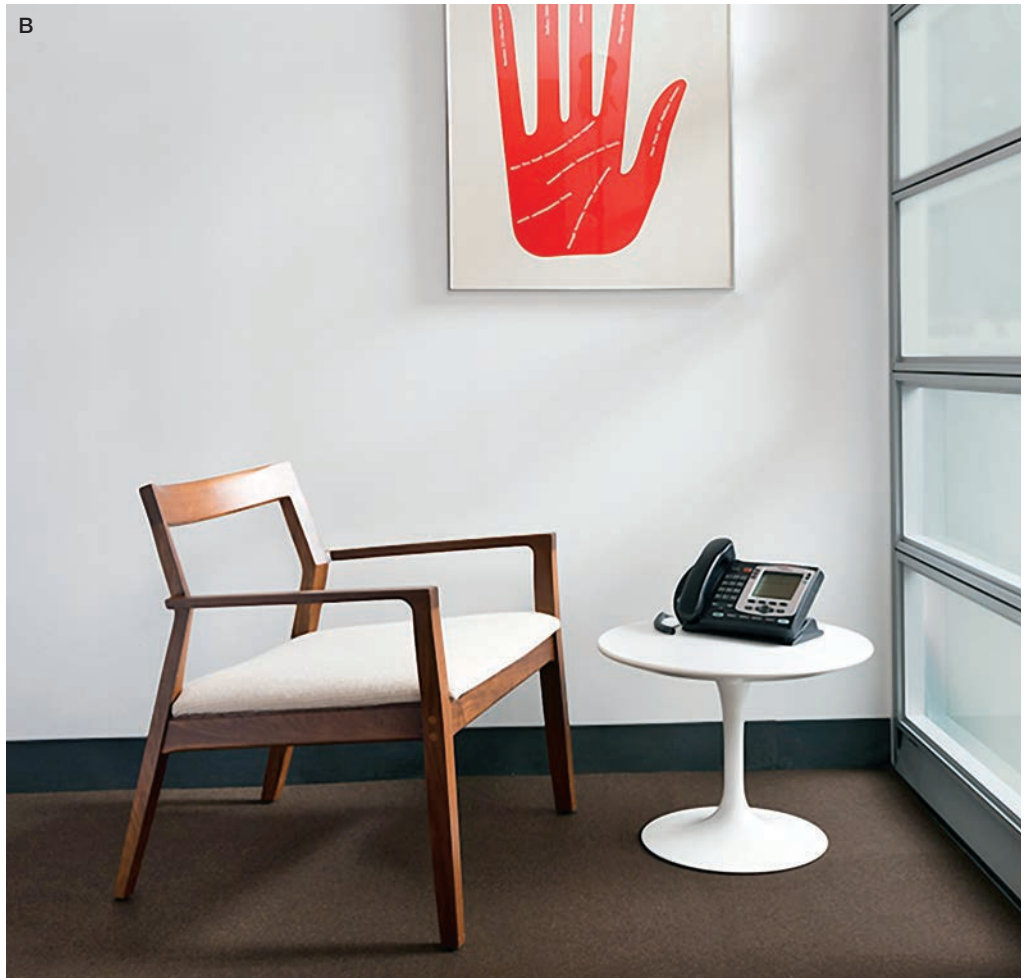
Jehs+Laub lounge chair; Power Cube. Essentials lead times apply with exception of Jehs+Laub.



Activity Spaces
A QUIET
GETAWAY



Activity spaces are essential. After all, Knoll research finds that almost 50% of all work takes place away from the primary work area.



Break away for uninterrupted or confidential work with refuge spaces designed for one or two people.

A. k.™ lounge; Interpole™; Toboggan® Pull Up table; Sapper™ monitor arm. Standard lead times apply; select products available at Essentials lead time.

B. Krusin lounge chair; Saarinen table. Essentials lead times apply.

C. Antenna® Workspaces desk; ReGeneration by Knoll® chair; Sapper monitor arm; Copeland Light™. Essentials lead times apply.

Lead times noted apply to products in finishes as shown.



A



B



D



A. k. lounge; Dividends Horizon® X-Base table and Open Weave screen. Essentials lead times apply.

B. Upstart® table; MultiGeneration by Knoll® stacking chair; Sapper monitor arm. EssentialsNow Quick Ship lead times apply.

C. Propeller® table; MultiGeneration by Knoll stacking chair; Sapper monitor arm. Essentials lead times apply.

D. Anchor™ lockers; ReGeneration by Knoll high task chair; k. lounge. Essentials lead times apply.

Lead times noted apply to products in finishes as shown.

Activity Spaces

GET EVERYONE ON THE SAME PAGE





Dividends Horizon table; MultiGeneration by Knoll hybrid chairs; Scribe® mobile markerboard; Calibre® storage. Essentials lead times apply to products in finishes as shown.





***Ideal for small get-togethers,
enclaves encourage shared work.***

A. Antenna Simple table; MultiGeneration by Knoll stacking chair.
Essentials lead times apply.

**B. Power Cube; Spark® Series lounge chair; Scribe mobile
markerboard.** Essentials lead times apply.

**C. k. lounge; Toboggan Pull Up table, Chair Desk and Bench;
Scribe mobile markerboard.** Standard lead times apply.

D. Saarinen table and Executive Armless chair; Calibre storage.
Essentials lead times apply.

Lead times noted apply to products in finishes as shown.

A

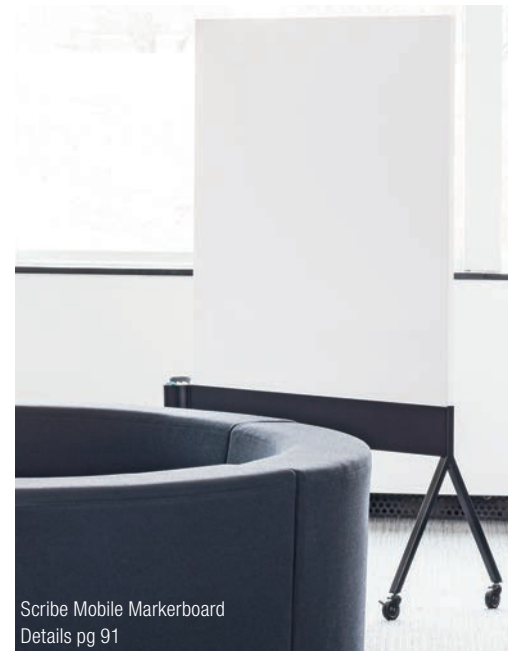


B





Power Disc
Details pg 84



Scribe Mobile Markerboard
Details pg 91



New technologies emerge rapidly. Knoll furniture is designed to be a neutral platform—supporting today's technology and ready to adapt to whatever your business requires tomorrow.

A. Dividends Horizon media enclave and X-Base table; Remix side chair; Sapper 50® monitor arm; Saarinen Executive Armless chair; Anchor storage. Essentials lead times apply with exception of upholstered storage cushion.

B. k. lounge; Antenna Workspaces table; Interpole; Scribe mobile markerboard; Sapper 50 monitor arm. Essentials lead times apply with exception of Interpole.

Lead times noted apply to products in finishes as shown.

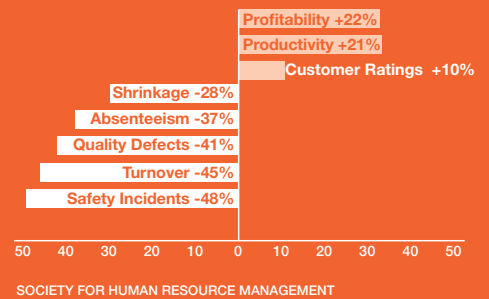


Interpole
Details pg 84

A



The impact of high levels of engagement



B



Quick or scheduled meetings come together in a space perfect for four to eight.

A. Antenna® Telescope™ Y-Base Height-Adjustable table; ReGeneration by Knoll high task chair; Scribe mobile markerboard; Anchor storage. Essentials lead times apply with exception of Antenna Telescope.

B. Propeller table; MultiGeneration by Knoll hybrid chair. Essentials lead times apply.

C. Reff Profiles™ 4x4 table and storage; Chadwick® chair. Essentials lead times apply.

D. LSM table; Life® chair; Calibre storage. Standard lead times apply; select products available at Essentials lead time.

Lead times noted apply to products in finishes as shown.





Dividends Horizon Conference table; Remix® High Back chair; Anchor storage. Essentials lead times apply to products as shown with exception of upholstered storage cushions.





Activity Spaces ASSEMBLE THE WHOLE TEAM



Antenna Simple table; MultiGeneration by Knoll stacking chair.
Essentials lead times apply to products as shown.





Training rooms — flexible spaces for multiple activities from education to informal presentations — typically include freely reconfigurable tables and agile chairs.



Plug in and connect with optional desktop power (shown) and Pixel Link systems (not shown)

A single person can reconfigure Pixel Tables in minutes, changing the environment in a snap.

A. Pixel™ T-Leg Flip-top table; Gigi Swivel chair. Standard lead times apply.

B. Pixel C-Leg Flip-top table; MultiGeneration by Knoll stacking chair; Pixel 4-Leg table; k. lounge. Essentials lead times apply.

C. Pixel C-Leg Flip-top table, nested. Essentials lead times apply.

Lead times noted apply to products in finishes as shown.



Durable molded urethane edge is ready to withstand wear and tear



Pixel Connect™ integrated ganging bracket



Usually large and enclosed, Assembly areas are equipped with multiple display surfaces — tackable, whiteboard and video — credenzas for storage and tables for refreshments.



A. Antenna Workspaces mobile table; ReGeneration by Knoll chair; Sparrow® Desktop LED light. Essentials lead times apply.

B. Spark Series side chair. Essentials lead times apply - chair limit 10.

C. Propeller table and storage; ReGeneration by Knoll chair; Scribe mobile markerboard. Essentials lead times apply.

D. Upstart table; CHIP stacking chair; Copeland Light. Essentials lead times apply.

Lead times noted apply to products in finishes as shown.





Linked Horsepower™ with Seat Pad; Antenna Workspaces Y-Base table; Bertolotto stool; Olivares Aluminum chair; MultiGeneration by Knoll stacking chair. Standard lead times apply to products as shown; select products available at Essentials lead time.

Activity Spaces GET SOCIAL







Establish a sense of belonging.

Put well-being to work.



WORKPLACES

- + Make it easy for people to connect with each other
- + Foster community
- + Tell your organizational story

WORK PRACTICES AND PROCESSES

- + Create a sense of community
- + Promote inclusion
- + Establish the broad vision



As 'town center' spaces, community areas encourage interactions where office culture can flourish.

A. Spark Series side chair; Dividends Horizon X-Base table; Antenna Workspaces table; Jamaica® stool. Essentials lead times apply.

B. Olivares Aluminum chair; 1966 Dining table and chair; Interpole. Standard lead times apply.

C. k. lounge; Toboggan bench; Anchor storage. Essentials lead times apply with exception of Toboggan.

D. Horsepower; Antenna Workspaces Y-Base table; Olivares Aluminum chair; Bertoia stool. Standard lead times apply – select products available at Essentials lead time.

Lead times noted apply to products in finishes as shown.





Independent Horsepower with compact Counter
Details pg 84

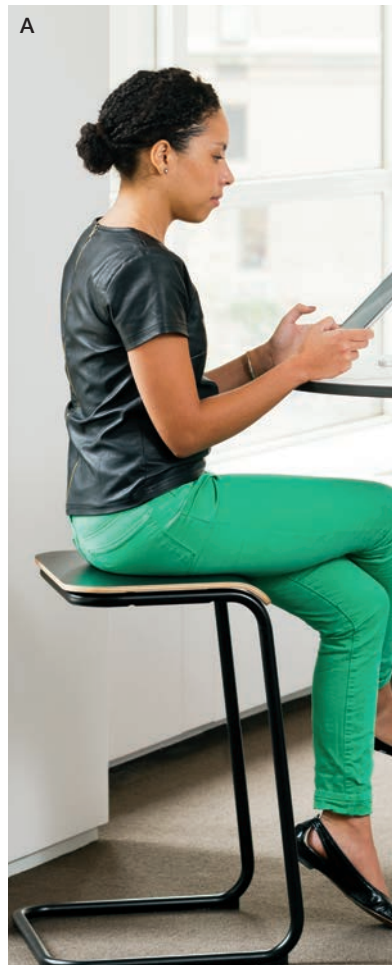


Mobile Horsepower with TV and lower Metal Shelf
Details pg 84



Linked Horsepower with Seat Pad
Details pg 84

Casual, collaborative work can be enhanced by providing easy access to power.



A place to recharge—literally and figuratively.

A. Interpole; Toboggan Pull Up table; D'Urso Swivel lounge chair; Saarinen table. Standard lead times apply – select products available at Essentials lead time.

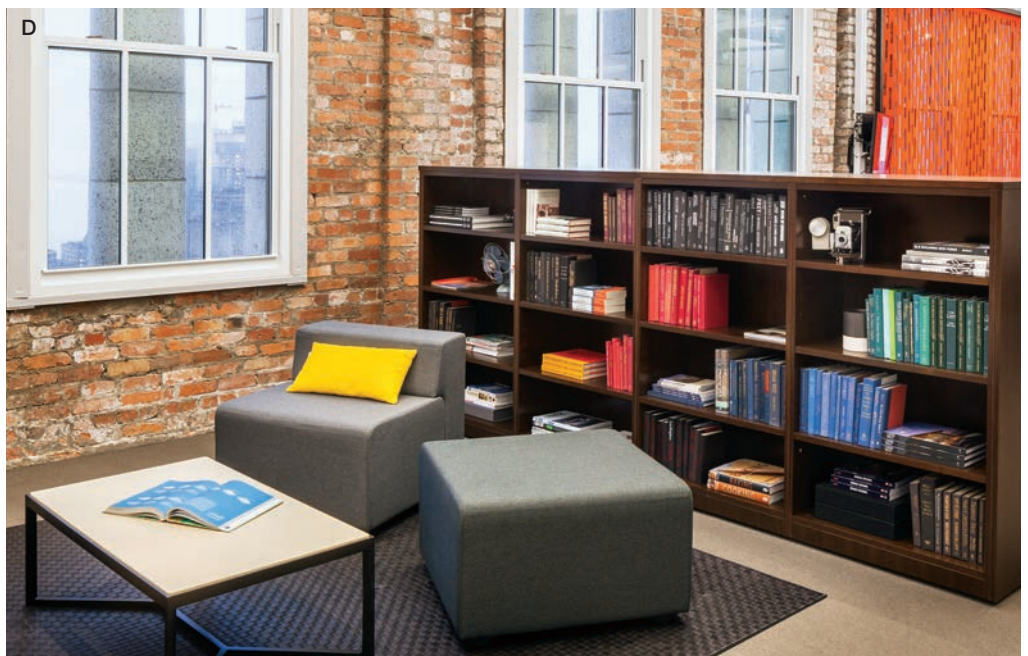
B. Interpole; Toboggan Chair Desk. Standard lead times apply.

C. Linked and independent Horsepower; Piton™ table; Pixel Column Leg table; Remix side chair; k. lounge stool. Essentials lead times apply with exception of Horsepower.

Lead times noted apply to products in finishes as shown.







A variety of
inviting community
spaces provide
a welcome change
of perspective.

A. Reff Profiles 4x4 table; MultiGeneration by Knoll stool; Krusin lounge chair; Barcelona® table; Krefeld settee; Anchor storage. Essentials lead times apply with exception of Krefeld.

B. Pixel Column Leg table; k. lounge stool. Essentials lead times apply.

C. Calibre storage; Reff Profiles 4x4 table; Gigi stool; Krusin lounge chair; Barcelona table; Krefeld settee; Toboggan Bench. Essentials lead times apply with exception of Krefeld and Toboggan.

D. k. lounge; Krusin table; Reff Profiles storage. Essentials lead times apply with exception of Krusin table.

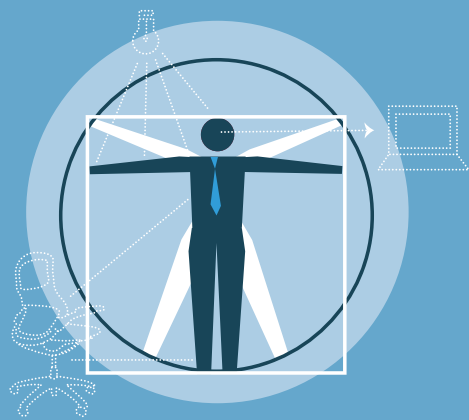
Lead times noted apply to products in finishes as shown.

Primary Work Areas

Still the hub for many workers, primary work areas need to put people and individual work styles first. Incorporating Holistic Ergonomics addresses people's macro and micro needs for comfort and performance as they move through daily roles that are sometimes individual, sometimes collaborative, and often in-between.

Holistic Ergonomics™

Holistic Ergonomics addresses new ways of working. It integrates the engineering and cognitive perspectives, and also expands the range of issues and workspaces addressed by the ergonomist.



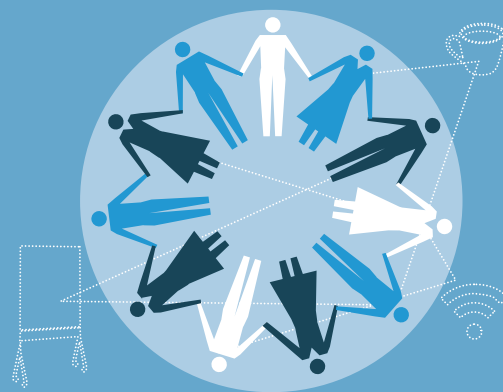
1 PHYSICAL ASPECTS OF WORK

STUDY OF BODY SIZE, CAPABILITIES — fit of the workplace to the individual



2 MENTAL ASPECTS OF WORK

WORK LOAD, JOB TASKS, SOFTWARE INTERFACE — the individual at work

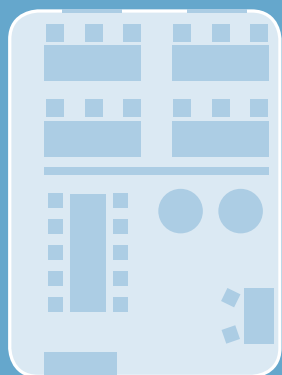


3 SOCIAL, COLLABORATIVE ASPECTS OF WORK

FORMAL AND INFORMAL GROUP WORK, TRANSITIONS BETWEEN MODES — group spaces

Macro and Micro Scale

The workplace should facilitate varying degrees of individual and collaborative work. Holistic Ergonomics considers planning at both the macro and micro scale.



Macro Planning

- + Determine the space requirements for work zones.
- + Create the right mix of work zones to support varying combinations of individual and collaborative work.
- + Use the space to support interaction, optimize work flow, and communicate social cues.



Micro Planning

- + Ensure spaces are adaptable and able to serve multiple functions.
- + Incorporate adjustable workspace furnishings and elements.
- + Support casual interaction in or near the primary workspace.
- + Choose seating that supports frequent shifts across a wide range of postures.

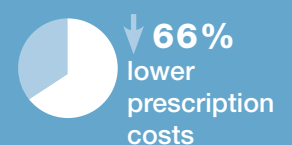
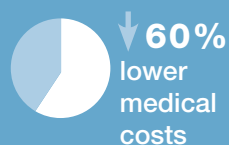
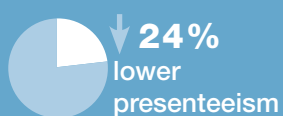
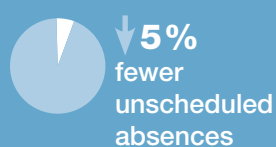
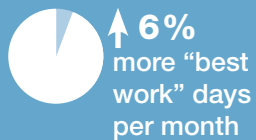
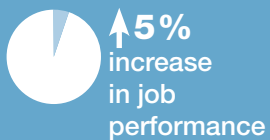


The Impact of Increased Well-Being

Workplace strategies that address employees' physical, emotional, and social well-being can increase employee engagement and lower costs.


+10%

increase in well-being
was associated with



Gallup



Dividends Horizon; Template® storage;
ReGeneration by Knoll chair; Anchor storage;
Sapper monitor arm. Essentials lead times
apply to products as shown.



Primary Work Areas
DESIGNED FOR
CONCENTRATION

A



B





Establish privacy and aid focus with well planned storage and panel heights.

A. Dividends Horizon with X-Base table; Remix chair and side chair; Anchor storage; Sapper XYZ crossbar monitor arm; Orchestra® slatwall accessories. Essentials lead times apply.

B. AutoStrada®; Reff Profiles storage; Generation by Knoll chair; Sapper monitor arm; Orchestra slatwall accessories. Standard lead times apply; select products available at Essentials lead time.

C. Dividends Horizon; ReGeneration by Knoll chair; Anchor storage; Series 2™ storage. Essentials lead times apply.

D. Dividends Horizon; Series 2 storage; Remix chair; Sapper monitor arm; Sparrow Desktop LED light; Smokador™ desktop accessories; Reff Profiles 4x4 table; Gigi stool. Essentials lead times apply.

Lead times noted apply to products in finishes as shown.

**Anchor storage; Dividends Horizon including X-Base table;
Remix work chair; Moment™ chair; Sparrow Desktop LED light;
Smokador desktop accessories.** Essentials lead times apply.



**Dividends Horizon; Remix work chair;
Template storage; Calibre storage; Sapper
XYZ monitor arm; Sparrow Desktop LED light;
Smokador desktop accessories; k. lounge;
Saarinen table.** Essentials lead times apply.



Tone™ Height-Adjustable table; Generation by Knoll chair; Antenna Workspaces Fence and storage; Template screen; Sapper XYZ monitor arm; Orchestra desktop accessories. Standard lead times apply; select products available at Essentials lead time.



Antenna Simple table; Antenna Workspaces storage and screen; Remix work chair; Sapper XYZ monitor arm; Orchestra desktop accessories; Dividends Horizon X-Base table; Interpole; Toboggan Pull Up table. Essentials lead times apply with exception of Interpole and Toboggan.



Lead times noted apply to products in finishes as shown.





Reception station transaction counters support a welcome exchange with visitors.

Make a first impression with a reception area that expresses your distinct culture and brand.

A. Reff Profiles; D'Urso Swivel lounge chair. Standard lead times apply.

B. Dividends Horizon; Anchor storage; ReGeneration by Knoll chair; Smokador desktop accessories. Essentials lead times apply.

C. Reff Profiles; Sapper monitor arm; Interpole. Standard lead times apply; select products available at Essentials lead time.

D. Dividends Horizon reception station and Conference table; D'Urso Swivel lounge chair; Saarinen Oval Coffee table; Remix work and High Back chair; Anchor storage. Essentials lead times apply.

Lead times noted apply to products in finishes as shown.

**Antenna Workspaces Big table and Fence; Calibre storage;
ReGeneration by Knoll high task chair; Generation by Knoll chair;
T-light, Sapper monitor arm; Anchor storage; Bertoia stool;
Smokador desktop accessories; Reff Profiles private office.**
Standard lead times apply to products as shown; select products available at
Essentials lead time.



Primary Work Areas
DESIGNED FOR
COLLABORATION





Sparrow Desktop LED Light
Details pg 90



Interpole with opaque whiteboard glass
Details pg 84



Sapper monitor arm
Details pg 86

***Work toward shared goals
organically throughout the day.***

A. Anchor storage; Antenna Workspaces Big table; Generation by Knoll chair; k. lounge stool; Interpole; MultiGeneration by Knoll stacking chair; Sapper monitor arm and XYZ Crossbar monitor arm; Sparrow Desktop LED light; Smokador desktop accessories. Essentials lead times apply with exception of Interpole.

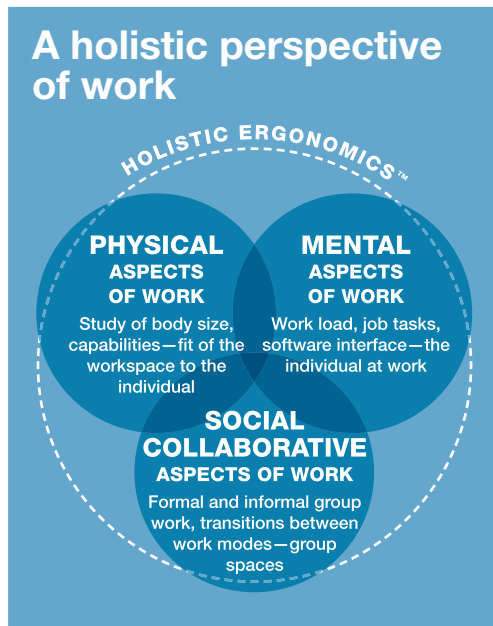
B. Antenna Workspaces Big table; Generation by Knoll chair; Calibre storage; Sapper monitor arm. Essentials lead times apply with exception of Antenna Workspaces cantilever shelf.

Lead times noted apply to products in finishes as shown.









A. ReGeneration by Knoll chair and high task chair; Dividends Horizon; Anchor storage. Essentials lead times apply.

B. Horsepower; Antenna Simple table; Antenna Workspaces storage; ReGeneration by Knoll chair; k. lounge; Toboggan Pull Up table. Standard lead times apply – select products available at Essentials lead time.

C. Morrison; Series 2 storage, Reff Profiles table; ReGeneration by Knoll chair; Moment chair; Smokador desktop accessories. Essentials lead times apply.

D. Antenna Workspaces Big table and storage; Generation by Knoll chair; Sapper monitor arm. Essentials lead times apply.

Lead times noted apply to products in finishes as shown.

A



B



C



*Create a team atmosphere
designed around the free flow
of ideas.*

A. Antenna Telescope Height-Adjustable table and screen; Antenna Workspaces storage, ReGeneration by Knoll chair; Sapper monitor arm; Interpole; Orchestra desktop accessories. Standard lead times apply; select products available at Essentials lead time.

B. Dividends Horizon and X-Base table; Series 2 storage; Generation by Knoll chair; Moment chair; Copeland Light; Smokador desktop accessories. Essentials lead times apply.

C. Tone Height-Adjustable table; Generation by Knoll chair; Antenna Workspace Fence and storage; Sapper XYZ monitor arm; Sparrow Desktop LED light; Orchestra desktop accessories. Standard lead times apply; select products available at Essentials lead time.

D. Antenna Workspaces and Y-Base table; MultiGeneration by Knoll hybrid chair; Generation by Knoll chair; Sparrow Desktop LED light; Power Disc; Interpole. Essentials lead times apply with exception of Interpole.

Lead times noted apply to products in finishes as shown.



Primary Work Areas DESIGNED FOR PRIVACY





Reff Profiles; Life chair; Remix side chair; D'Urso Swivel lounge chair; Piton Adjustable Height stool; Saarinen Round Coffee table; Sparrow Desktop LED light. Essentials lead times apply to products as shown.





Space for occasional guests supports connection in an otherwise individual private office.

A. Reff Profiles; Life chair; MultiGeneration by Knoll hybrid chair; Sapper monitor arm. Standard lead times apply; select products available at Essentials lead time.

B. Pixel T-Leg Electric Height-Adjustable table; Generation by Knoll chair; Piton Adjustable Height stool. Standard lead times apply; select products available at Essentials lead time.

C. Reff Profiles; Remix High Back chair; Saarinen Executive Armless chair; Krusin lounge chair; Smokador desktop accessories; Gigi stool. Essentials lead times apply.

Lead times noted apply to products in finishes as shown.

A



B



Today's private offices support not only individual work but can be the site of focused collaboration.



Individualize private offices based on storage needs, work styles and personalities.

A. Anchor storage; Dividends Horizon X-Base table; Remix High Back chair; Saarinen Executive Armless chair; Smokador desktop accessories. Essentials lead times apply.

B. Reff Profiles; Generation by Knoll chair; Saarinen Executive Armless chair; Sapper monitor arm, Smokador desktop accessories. Essentials lead times apply.

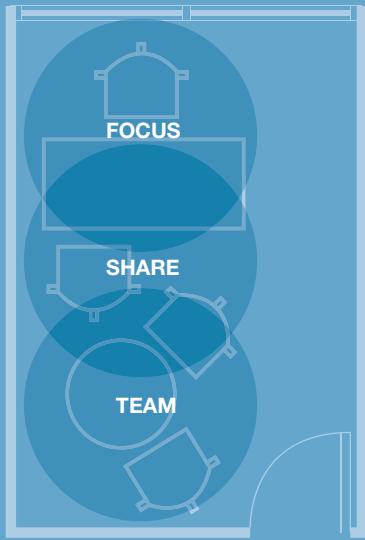
C. Dividends Horizon; Reff Profiles storage; Template storage; Generation by Knoll chair; Universal Fabric Board. Essentials lead times apply.

D. Reff Profiles; Saarinen Executive Arm chair; Life chair; Scribe mobile markerboard; Sapper XYZ monitor arm. Standard lead times apply; select products available at Essentials lead time.

E. Antenna Workspaces; Generation by Knoll chair; Moment chair. Standard lead times apply; select products available at Essentials lead time.

Lead times noted apply to products in finishes as shown.

The Flexible Private Office



Multi-use private offices blend team, shared and individual spaces in varying degrees.

A. Anchor storage; Dividends Horizon X-Base table; Remix Work and Side chair; Krefeld settee; Krusin lounge chair; Saarinen Oval Coffee table; Smokador desktop accessories. Essentials lead times apply with exception of Krefeld.

B. Antenna Workspaces; Calibre storage; Saarinen Round Dining table; Generation by Knoll chair; Bertioia side chair. Essentials lead times apply.

C. Antenna Workspaces; MultiGeneration by Knoll hybrid chair; Generation by Knoll chair. Standard lead times apply; select products available at Essentials lead time.

Lead times noted apply to products in finishes as shown.





Remix side chair
Details pg 68



Sparrow and Highwire® Under-Cabinet
LED lights
Details pg 90



Smokador desktop accessories
Details pg 88

The private office
is evolving into a
nimble space to
support the
changes in today's
technology-rich,
collaboration-
focused workplace.

A



B



A. Template storage; Dividends Horizon storage and X-Base table; Series 2 storage; Remix work and side chair; Sapper monitor arm. Essentials lead times apply.

B. Antenna Workspaces; Generation by Knoll chair; MultiGeneration by Knoll hybrid chair; Copeland Light; Smokador desktop accessories. Standard lead times apply; select products available at Essentials lead time.

Lead times noted apply to products in finishes as shown.



Product Index

Explore the wide variety of high-performance products available through Knoll Essentials, including an impressive range of materials and finishes to reflect your brand and culture. Enhance opportunities for collaboration and make your space your own. Most of these products can be ready to install in just four weeks.



Work Chairs 64–65



Side & Multi-Use Chairs 66–69



Lounge Seating 70–71



Collaborative & Dining Tables 72–73



Meeting & Conference Tables 74–75



Adjustable & Mobile Tables 76–77



Occasional Tables 78–79



Storage 80–83



Enhanced Power & Data 84-85



Technology Support 86-87



Desktop Management 88-89



Lighting 90



Communication Boards 91



KnollTextiles and Leather 92-95



Finishes 96-101



Program Exceptions Summary 102

Work Chairs



Remix® **NEW**

Remix intelligently layers upholstered comfort with innovative Flex Net Matrix™ technology for active, all-day support. Best of NeoCon Gold, 2014. Designed by Formway Design.

Shown with height adjustable arms, plastic base, tilt tension control with three-point tilt lock, sliding seat; back and seat in Delite, Catalina.

Essentials lead times apply.



Remix® High Back **NEW**

Remix infuses movement into a traditionally static upholstered chair. Designed by Formway Design.

Shown with fixed aluminum loop arms, aluminum base, tilt tension control with three-point tilt lock, sliding seat; back and seat in Delite, Cinder.

Essentials lead times apply.



Life®

Intuitive adjustments, a slim silhouette and broad finish palette set the standard for ergonomic, innovative design. Designed by Formway Design.

Shown with high performance arms, aluminum base, synchronized recline with auto-balanced tension, sliding seat; Back Suspension Fabric in Navy and Knitted Seat Topper in Dark Blue.

Essentials and EssentialsNow Quickship lead times apply.



Generation by Knoll®

Generation offers a new standard of comfort and unrestrained movement. Best of NeoCon Gold, 2009. Designed by Formway Design.

Shown with high-performance arms, plastic base, dark finish, Dynamic Suspension control, sliding seat, Flex Back Net and Generation Fabric seat in Bluemarine.

Essentials and EssentialsNow Quickship lead times apply.



ReGeneration by Knoll®

Innovative in its simplicity, ReGeneration by Knoll minimizes materials and components. Designed by Formway Design.

Shown with high-performance arms, plastic base, Dynamic Suspension control, sliding seat; Flex Back Net and Generation Fabric seat in Onyx.

Essentials and EssentialsNow Quickship lead times apply.



ReGeneration by Knoll® High Task

ReGeneration provides the comfort and support users need as they move about their day without interrupting their workflow. Designed by Formway Design.

Shown with height adjustable arms, plastic base, Dynamic Suspension control, sliding seat; Flex Back Net and Generation Fabric seat in Onyx.

Essentials lead times apply.



Chadwick®

Perfect for working, meeting or training, Chadwick responds to the body's movements using minimal, easy adjustments. Designed by Don Chadwick.

Shown with adjustable arms and tilt stop control;
 Chadwick Fabric in Black.

Essentials and EssentialsNow Quickship lead times apply.



Chadwick® High Task

Chadwick, available in a high task version with an adjustable foot ring. Designed by Don Chadwick.

Shown with adjustable arms and tilt stop control; Chadwick Fabric in Silver.

Essentials lead times apply.



EWC Pro™

EWC Pro has a traditional appeal and satisfies a classic aesthetic. Designed by Jeffrey Bennett and Nicholas Dodziuk.

Shown with height adjustable arms, aluminum base, upholstered back with plastic outer back, synchro tilt control, upholstered in Mariner, Steel.

Essentials and EssentialsNow Quickship lead times apply.

Designed to support every body.

Sitting is more active than it seems. That's why award-winning Remix and Generation by Knoll work chairs use a breakthrough, high-performance elastomer that conforms to and moves with the user. Entirely new to seating, this high-tech material is durable, flexible and sustains its shape through even the most punishing use.



Side and Multi-Use Chairs

Modern Classics



Saarinen Executive Arm Chair **NEW**

Shown in Ricochet, Flame with 5-star base, hard casters, 360° swivel, tilt and pneumatic seat height adjustment. Designed by Eero Saarinen.

Essentials lead times apply - quantity limit 4.



Saarinen Executive Arm Chair **NEW**

Shown in Journey, Jingle with Light Oak wood legs. Designed by Eero Saarinen.

Essentials lead times apply - quantity limit 4.

+ Also available in Ebonized Walnut, Light Walnut, Pearwood or Polished Chrome legs.



Saarinen Executive Armless Chair

Shown in Ricochet, Ebony with Polished Chrome legs. Designed by Eero Saarinen.

Essentials lead times apply - quantity limit 4.



Bertoia Side Chair

Shown with seat cushion in Ricochet, Flame with Polished Chrome finish. Designed by Harry Bertoia.

Essentials lead times apply - quantity limit 10.



Sprite Stacking Chair

Stacks 8-high. Shown in Black, White, and Rotary Maple. Designed by Ross Lovegrove.

Essentials lead times apply - quantity limit 10.



Washington Skin™ Nylon Chair

Shown in Orange. Designed by David Adjaye. Standard lead times apply.

+ Also available in Black, Grey, Red, Yellow and Lime.



X3 Stacking Chair

Stacks 8-high. Shown in Smoke with Polished Chrome frame. Designed by Marco Maran.

Essentials lead times apply - quantity limit 10.

+ Also available in Clear Grey.



Krusin Side Chair

Shown in Burnt Walnut with Nonchalant, Cornflower seat. Designed by Marc Krusin.

Essentials lead times apply - quantity limit 10.

+ Also available in Beech, Ebonized and Light Cherry.

Tried & True



Ricchio Arm Chair

Shown in Light Cherry with Presto, Black Tie seat. Designed by Joe and Linda Ricchio.

Essentials lead times apply - quantity limit 25.

+ Also available armless, and in Burnt Walnut, Ebonized and Beech.



JR® Chair

Shown in Light Cherry with Ransom, Forgery seat. Designed by Joe Ricchio.

Essentials lead times apply - quantity limit 25.

+ Also available in Burnt Walnut, Ebonized, Clear Maple and Beech.



CHIP Chair

Stacks 12-high. Shown in Birch with Polished Chrome frame. Designed by Antti Kotilainen.

Essentials lead times apply - quantity limit 10.

+ Also available in Black and White.



Moment™

Stacks 4-high. Shown in Volo, Black seat, Almost Black back with Trivalent Chrome frame. Designed by Jeffrey Bennett and Nicholas Dodziuk.

Essentials lead times apply.

+ Also available in Charcoal, Orange, Red and White back.



Gigi® Armless Swivel Chair

Shown in Black with Chrome base, height-adjustable. Designed by Marco Maran.

Essentials lead times apply - quantity limit 25.

+ Also available in Graphite.



Gigi Chair

Stacks 4-high on floor, 8-high on Gigi dolly. Shown in Black with Polished Chrome legs. Designed by Marco Maran.

Essentials lead times apply - quantity limit 25.

+ Also available in Graphite.



EWC™ Pro Side Chair

Stacks 3-high. Shown in Presto, Clear Gray with fixed arms and plastic outer back. Designed by Jeffrey Bennett and Nicholas Dodziuk.

Essentials lead times apply.

+ Also available armless; casters optional.

continued...

Side and Multi-Use Chairs

Promotes Comfort & Movement



Remix® Side Chair NEW

Shown in Delite, Gray with casters. Designed by Formway Design. Essentials lead times apply.

+ Also available with glides.



MultiGeneration by Knoll® Chair



Stacks 6-high. Shown in Onyx with Silver frame, fixed arms and casters. Designed by Formway Design.

Essentials & EssentialsNow Quickship lead times apply.

+ Also available with glides.



MultiGeneration by Knoll® Hybrid Chair

Shown in Off White with Polished Chrome frame, armless and casters. Designed by Formway Design.

Essentials lead times apply.

+ Also available with arms, in Yellow, Dark Red, Grey, Dark Grey, and Onyx; seat pad and glides optional.



MultiGeneration by Knoll® Chair

Stacks 6-high, 10-high on MultiGeneration dolly. Shown in Yellow, Grey, Off White, and Dark Red with Metallic Grey frame, fixed arms and glides. Designed by Formway Design.

Essentials lead times apply.

+ Also available armless, in Dark Grey and Onyx; seat pad and casters optional.



MultiGeneration by Knoll® Tablet Arm Chair

Shown in Off White with Silver frame, Generation Fabric, Pebble seat, tablet arm, book basket and glides. Designed by Formway Design.

Essentials lead times apply.

+ Also available in Yellow, Dark Red, Grey, Dark Grey, and Onyx; casters optional.

Versatile & Playful



Piton™ Stool NEW

Adjustable height shown in Teak with Red Coral base; fixed height shown in Polished Aluminum with Jet Black base. Designed by Edward Barber and Jay Osgerby.

Essentials lead times apply - quantity limit 10.

+ Also available as Side Table.



Toboggan® Chair Desk

Shown in White Oak with White frame. Designed by Masamichi Udagawa and Sigi Moeslinger.

Standard lead times apply.

+ Also available in Jet Black, Medium Grey, Bright White, Dark Grey and Slate Blue.



Toboggan® Seat and Pull Up Table

Seat shown in Dark Red; Pull Up shown in Medium Grey. Designed by Masamichi Udagawa and Sigi Moeslinger.

Standard lead times apply.

+ Also available in Jet Black, Bright White, Dark Grey, Slate Blue; and three-seat bench.



k.™ lounge Stool

Shown in Heirloom Tomato.

Essentials lead times apply - quantity limit 10.

+ Also available in Earl Grey, Blue Moon and Green Tea; 10 additional modular pieces.

Spirited Stools



Gigi® Stool **NEW**

Bar height shown in Graphite, counter height shown in Black with Polished Chrome legs. Designed by Marco Maran.

Essentials lead times apply - quantity limit 25.

+ Also available as Stacking or Swivel Side Chair.



MultiGeneration by Knoll® Stool **NEW**

Bar height shown in Dark Grey with Metallic Grey frame, Generation Fabric, Storm seat. Designed by Formway Design.

Essentials lead times apply.

+ Also available in Yellow, Dark Red, Grey, Onyx, and Off White; counter height and seat pad optional.



Bertoia Stool

Bar height shown with seat cushion in Ricochet, Teal with Polished Chrome frame. Designed by Harry Bertoia.

Essentials lead times apply - quantity limit 10.

+ Also available in counter height; Black, White or Satin Chrome frame; full cover optional.



Jamaica® Stool

Bar and counter height shown in Anodized Aluminum. Designed by Pepe Cortés.

Essentials lead times apply - quantity limit 10.

+ Also available in black and white nylon seat.

Outdoor Friendly



Spark® Series Side Chair

Stacks 6-high on floor, 10-high on Spark dolly. Shown in Red. Designed by Don Chadwick.

Essentials lead times apply - quantity limit 10.

+ Also available in Blue, Citron, Light Grey, Dark Grey and Recycled Black; ganging mechanism optional.



Stones

Adult seat shown in Chartreuse and Blue without seat pad. Designed by Maya Lin.

Essentials lead times apply - quantity limit 5.

+ Also available in Warm Red and Silver; weight optional.



Olivares Aluminum Chair

Stacks 6-high on floor, 10-high on Olivares dolly. Shown in White, Sky Blue and Blue. Designed by Jonathan Olivares.

Standard lead times apply – quantity limit 25.

+ Also available in Dark Charcoal, Lime Green, Orange, Plum and Yellow.



1966 Dining Chair

Shown in White. Designed by Richard Schultz.

Standard lead times apply – quantity limit 25.



1966 Dining Arm Chair

Shown in White. Designed by Richard Schultz.

Standard lead times apply – quantity limit 25.

+ Also available in Lounge chair.

Lounge Seating



k.™ lounge
 11 modular elements shown in Green Tea.
 Essentials lead times apply - quantity limit 10.
 + Also available in Blue Moon and Earl Grey;
 Stool (only) additionally offered in Heirloom Tomato.



Bench, two seat 52"W 21.5"D 17.25"H	Bench, three seat 78"W 21.5"D 17.25"H	60° Curved bench 38.75"W 38.75"D 17.25"H	Bench with back, single seat 26"W 28.25"D 26"H
---	---	--	--



Bench with back, two seat 52"W 28.25"D 26"H	Bench with back, three seat 78"W 28.25"D 26"H	60° Curved bench with back, inside radius 44.5"W 44.5"D 26"H	60° Curved bench with back, outside radius 42"W 42"D 26"H
---	---	--	---



Ottoman 28.25"W 28.25"D 17.25"H	Stool 16"W 16"D 17.25"H	Pouf 50"W 50"D 17.25"H
---	-----------------------------------	----------------------------------



Suzanne Lounge
 Shown in Lounge Chair, Sofa and Double Lounge Chair. Designed by Kazuhide Takahama.
 Standard lead times apply – quantity limit 10.



Bertoia Diamond Chair
 Shown with seat cushion in Classic Boucle, Cayenne with Polished Chrome frame. Designed by Harry Bertoia.
 Essentials lead times apply - quantity limit 10.



D'Urso Swivel Chair

Shown in Hourglass, Spring with Polished Aluminum base, height-adjustable. Designed by Joseph Paul D'Urso. Essentials lead times apply – quantity limit 2.

+ Also available in Textured Black and Warm White base; optional return to center mechanism.



D'Urso Contract Small Sofa

Sofa surround in Spinneybeck® Volo leather, Tuscany, cushions in Hourglass, Tart with Polished Chrome legs. Designed by Joseph Paul D'Urso.

Standard lead times apply – quantity limit 4.



D'Urso Contract Ottoman

Ottoman shown in Hourglass, Gull with Polished Chrome legs. Designed by Joseph Paul D'Urso.

Standard lead times apply – quantity limit 4.



Krefeld Lounge

Shown in Settee, Lounge Chair, Ottoman and Sofa with Light Oak and Wenge wood legs. Designed by Ludwig Mies van der Rohe. Standard lead times apply – quantity limit 4.



Jehs+Laub Wire Base Lounge Chair and Ottoman

Shown in Classic Boucle, Flax, contrasting Spinneybeck leather welt with Textured Black base and fixed back. Designed by Markus Jehs and Jürgen Laub.

Standard lead times apply – quantity limit 2.

+ Also available in articulating back.



Jehs+Laub Pedestal Base Lounge Chair and Ottoman

Shown in Spinneybeck leather Volo, Stallion with Polished Aluminum base and fixed back. Designed by Markus Jehs and Jürgen Laub.

Standard lead times apply – quantity limit 2.

+ Also available in articulating back; optional return to center mechanism.



Barcelona® Chair and Ottoman

Shown in Spinneybeck Volo leather, Constantinople with Polished Chrome frame. Designed by Ludwig Mies van der Rohe.

Essentials lead times apply – quantity limit 4.



Krusin Lounge Chair

Shown in Burnt Walnut with Spinneybeck Volo leather, Cadet seat. Designed by Marc Krusin.

Essentials lead times apply - quantity limit 10.

+ Also available in Beech, Ebonized and Light Cherry.



1966 Lounge Chair

Shown in White. Designed by Richard Schultz.

Standard lead times apply – quantity limit 25.

+ Also available in Dining chair.



Spark® Series Lounge Chair

Stacks 6-high on floor, 10-high on Spark dolly. Shown in Dark Grey. Designed by Don Chadwick.

Essentials lead times apply - quantity limit 10.

+ Also available in Blue, Citron, Light Grey, Red and Recycled Black.

Collaborative and Dining Tables

EssentialsNow
Quick Ship
available. Applies to
limited finishes and
options only.
Quantity limit 25.



Pixel™ Column Leg Table **NEW**

Available in 36"D round, 30"D square; 23.5", 28.75", 36", 42"H.

Shown in White. Designed by Marc Krusin.

Essentials lead times apply in limited finishes - quantity limit 20.

+ Also available with cutout and electrical.



Pixel™ 4-Leg Table **NEW**

Available in square 36", 42", 48"D; and rectangular 18", 24", 30", 36"D; 48", 60", 72"W; 28.75"H.

Shown with Graphite Pear laminate top and White legs. Designed by Marc Krusin.

Essentials lead times apply in limited finishes - quantity limit 20.

+ Also available with casters, cutout and electrical optional.



Antenna® Simple Table

Available with continuous power capability in a wide variety of sizes and shapes including rectangle, round, square and track. 25.8" – 31.5"H.

Shown with White laminate top and Dark Grey legs. Designed by Masamichi Udagawa and Sigi Moeslinger.

Essentials lead times apply – laminate only.

+ Also available with casters; linking feature optional.



Antenna® Workspaces Round Table

Available in 42", 48"D; 18.5", 24.5", 28.5"H.

Shown with Walnut laminate top and Silver legs. Designed by Masamichi Udagawa and Sigi Moeslinger.

Essentials lead times apply – laminate only.



Stromborg Table

Available in square 42"x42"; and rectangular 30"x60", 36"x72"D; 29"H. Outdoor-friendly.

Shown with in White. Designed by Daniel Stromborg.

Standard lead times apply in White only - quantity limit 4.



Reff Profiles™ Column Leg Table

Available in round and square 42", 48"D; 26.5", 28 3/8"H.

Shown with Walnut laminate top and Medium Grey legs. Designed by Brian Graham.

Essentials lead times apply – laminate and V319, V412, V414, V417 only - quantity limit 25.

+ Also available with casters.



Reff Profiles™ Sliding Table

Available in round and soft square 36", 42"D; 26.5", 28 3/8"H; and rectangular 30"x48", 36"x54".

Shown with Natural Oak veneer top and White base. Designed by Brian Graham.

Essentials lead times apply – laminate and V319, V412, V414, V417 only - quantity limit 25.



Dividends Horizon® X-Base Table

Available in round, square and rounded square 30", 36", 42", 48"D; 17", 21", 28.5", 36", 42"H.

Shown with White laminate top and Medium Grey base. Designed by Jeffrey Bennett and Nicholas Dodziuk.

Essentials lead times apply – laminate only.



Saarinen Table

Available in round 35.75", 42.25", 47.25"D; 28.5"H

Shown in White. Designed by Eero Saarinen. Essentials lead times apply in White only - quantity limit 2.



Propeller® Column Base Table

Available in round and square, 42", 48"D; square additionally in 30", 36"D; 28.5"H

Shown with Natural Maple laminate top and Aluminum base. Designed by Emanuela Frattini.

Essentials lead times apply in laminate only - quantity limit 10.



D'Urso Work Table

Available in square 48", 54", 60"D; and round 42", 48", 54", 60"D; 27.5"H.

Shown with White laminate top and Polished Chrome legs. Designed by Joseph Paul D'Urso. Standard lead times apply in White laminate only, Chrome or Black legs - quantity limit 1.

+ Also available with casters.



Power Cube

Available in square 24" or 36", 13"H with writable surface; hard-wired, cord-set, and non-powered.

Shown hard-wired.

Essentials lead times apply - quantity limit 5.

+ Also available with USB ports; magnetic marker cup optional.



Antenna® Workspaces Y-Base Table

Available in 36", 42"D; 24.5", 28.5"H; and 36"D x 36.5"H.

Shown with Black laminate top and Black base. Designed by Masamichi Udagawa and Sigi Moeslinger.

Essentials lead times apply – laminate only.



Antenna® Workspaces Table

Available in square 30", 36", 42", 48"D; and rectangular 24"x48", 27"x54", 30"x60", 36"x72", 42"x84"; 28.5"H.

Shown with Walnut laminate top and Black legs. Designed by Masamichi Udagawa and Sigi Moeslinger.

Essentials lead times apply – laminate only.



AutoStrada® Table

Available in round 36", 42", 48"; square 42", 48"; and rectangular 30"x48", 30"x60", 30"x72", 36"x72"; 27", 28", 30"H.

Shown with Black laminate top and Anodized Aluminum diamond legs.

Essentials lead times apply – laminate and V412, V319, V417, V414 only, quantity limit 25.

+ Also available with casters.



1966 Dining Table

Available in 38"x38", 38"x60", 28"H; and bar height 28"x28"; 42"H. Outdoor friendly.

Shown in White. Designed by Richard Schultz.

Standard lead times apply in White only - quantity limit 10.



Upstart® Table

Available in a variety of sizes and shapes including rectangular, oval, tripod, corner, wiper, half round and round. 25" – 30"H.

Shown with White laminate top and Medium Grey legs. Designed by Robert Reuter and Charles Rozier.

Essentials & EssentialsNow Quickship lead times apply.

+ Also available with linking feature; casters optional.



Meeting and Conference Tables



Pixel™ 4-Leg Table **NEW**

Available in square 36", 42", 48"D; and rectangular 18", 24", 30", 36"D; 48", 60", 72"W; 28.75"H.

Shown in White. Designed by Marc Krusin.

Essentials lead times apply in limited finishes - quantity limit 20.

+ Also available with casters, cutout and electrical optional.



Pixel™ Y-Leg Table **NEW**

Available in 72", 84", 96"W; 36"D; 28.75"H.

Shown with White laminate top and Black base. Designed by Marc Krusin.

Standard lead times apply.

+ Also available with casters, flip top, cutout and electrical optional.



Saarinen Table

Available in oval 54"x96"; 28.5"H

Shown in White. Designed by Eero Saarinen.

Essentials lead times apply in White only - quantity limit 2.



Reff Profiles™ Meeting Table with 2x4 Legs

Available in 36"x72" to 48"x96" in six-inch increments, 28³/₈"H.

Shown with Black laminate top and Silver legs. Designed by Brian Graham.

Essentials lead times apply – laminate and V412, V319, V417, V414 only - quantity limit 25.



Reff Profiles™ Meeting Table with 4x4 Legs

Available in 36"x72" to 48"x96" in six-inch increments, 28³/₈"H.

Shown with Folkstone Grey laminate top and White legs. Designed by Brian Graham.

Essentials lead times apply – laminate and V412, V319, V417, V414 only, quantity limit 25.



Reff Profiles™ Column Leg Racetrack Table

Available in 36"x72", 42"x84", 48"x96"; 26.5", 28 3/8"H.

Shown with Natural Oak veneer top and White legs. Designed by Brian Graham.

Essentials lead times apply – laminate and V412, V319, V417, V414 only. Quantity limit 25.



Antenna® Workspaces Racetrack Table

Available in 36"x72", 42"x84"; 28.5"H.

Shown with Walnut laminate top and White legs. Designed by Masamichi Udagawa and Sigi Moeslinger.

Essentials lead times apply – laminate only.



Antenna® Workspaces Rectangular Desk

Available in widths every six inches from 36" to 84"; 18", 24", 27", 30", 36", 42", 48"D; 28.5"H.

Shown with White laminate top including extensions and Medium Grey legs. Designed by Masamichi Udagawa and Sigi Moeslinger. Essentials lead times apply – laminate only.

+ Also available with casters, extension tops optional.



Antenna® Workspaces Y-Base Table

Available in track or rectangular 36"x72", 42"x84"; 28.5", 36.5"H.

Shown with Natural Maple laminate top and Silver base. Designed by Masamichi Udagawa and Sigi Moeslinger.

Essentials lead times apply – laminate only.



Upstart® Table

Available in variety of sizes and shapes including rectangular, oval, tripod, corner, wiper, half round and round. 25"–30"H. Shown with Medium Grey laminate top and Folkstone Grey legs. Designed by Robert Reuter and Charles Rozier. Essentials & EssentialsNow Quickship lead times apply.
+ Also available with linking feature; casters optional.



Dividends Horizon® Y-Leg Table

Available in racetrack and rectangular in widths every six inches from 60" to 96"; 24", 30", 36"D. 42"D available in 84", 90", 96"W. Shown in White laminate top and Dark Grey legs. Designed by Jeffrey Bennett and Nicholas Dodziuk. Essentials lead times apply - laminate only.



Dividends Horizon® Conference Table

Available in racetrack and rectangular 36"D; 102", 108"W and including boat shape 42", 48"W; 102", 108", 120", 132", 144"; 28.5"H. Shown with Walnut laminate top and Silver base. Designed by Jeffrey Bennett and Nicholas Dodziuk. Essentials lead times apply – laminate only.



LSM L-Leg Conference Table

Available in 48"x96", 48"x108", 60"x120, 60"x180"; 29"H. Shown in White. Designed by Debra Lehman-Smith and Ron Fiegenschuh. Standard lead times apply in White laminate, plinth edge, White or Brushed Anodized Aluminum leg - quantity limit 1.



1966 Dining Table

Available in 38"x38", 38"x60", 28"H. Outdoor friendly. Shown in White. Designed by Richard Schultz. Standard lead times apply in White only - quantity limit 10.



Propeller® Rectangular Conference Table

Available in single or dual segments, 42" to 144"W; 42", 48", 60"D; 28.5"H. Shown with White laminate top, flat edgeband and Anodized Aluminum legs. Designed by Emanuela Frattini. Essentials lead times apply in laminate only - quantity limit 10.
+ Also available with casters.



Antenna® Simple Rectangular Table

Available with continuous power capability in widths every six inches from 36" to 84"; 18", 24", 27", 30"; 36"D. 25.8"–31.5"H. Shown with Black laminate top and Folkstone Grey legs. Designed by Masamichi Udagawa and Sigi Moeslinger. Essentials lead times apply – laminate only.
+ Also available with casters; linking feature optional.



D'Urso Work Table

Available in racetrack 36"x72", 42"x84", 48"x96"; 27.5"H. Shown with White laminate top and Chrome legs. Designed by Joseph Paul D'Urso. Standard lead times apply in White laminate only, Chrome or Black legs - quantity limit 1.
+ Also available with casters.



Stromborg Table

Available in 36"x72"D; 29"H. Outdoor friendly. Shown with White. Designed by Daniel Stromborg. Standard lead times apply in White only - quantity limit 4.

Adjustable and Mobile Tables



EssentialsNow
Quick Ship
available. Applies to
limited finishes and
options only.
Quantity limit 25.



Pixel™ C-Leg Flip Top Table **NEW**

Available in Fixed and Flip Top 18", 24", 30"D; 48", 60", 72"W; 28.75"H.

Shown in White. Designed by Marc Krusin.

Essentials lead times apply in limited finishes - quantity limit 20.

+ Also available with glides, cutout and electrical optional.



Pixel™ C-Leg Electric Height-Adjustable Table **NEW**

Available with easy ganging mechanism in Fixed Top 30"D; 60", 72"W; 28.75"—51.6"H.

Shown in White. Designed by Marc Krusin.

Standard lead times apply.

+ Also available in Pin Set Height-Adjustable; cutout and electrical optional.



Pixel™ T-Leg Pinset Height-Adjustable Table **NEW**

Available with easy ganging mechanism in Fixed and Flip Top 30", 36"D; 60", 72"W; 28.75"—34"H.

Shown in Light Ash laminate top and Black base. Designed by Marc Krusin.

Standard lead times apply.

+ Also available in Electric Height-Adjustable; glides, cutout and electrical optional.



Tone™ Height-Adjustable Table

Available in C-Leg and T-Leg, rectangular and corner tops in four base types: Extended Electric 21.6"—47.8"H, Electric 26.8"—43.4"H, Pin Set 25.8"—40.8"H, and Fixed 26.8"H.

Shown with Walnut laminate top and Soft Grey base.

Essentials lead times apply in Antenna, Dividends and Reff Profiles laminate tops, Black, White and Silver bases only, quantity limit 10.

+ Also available with screens.



Antenna® Telescope Dual Height-Adjustable Table

Available in widths every six inches from 48" to 84"; 24", 27", 30"D; Standard Electric 27.4"—43.5"H, Extended Electric 22.5"—48.75"H.

Shown with Walnut laminate top and White legs. Designed by Antenna Design.

Standard lead times apply.

+ Also available with return bases, screens optional.



Antenna® Telescope Y-Base Height-Adjustable Table

Available in round 36", 42"D; rectangular, track and bullet 36"x72", 42"x84".

Shown with White laminate top and Folkstone Grey base.

Designed by Antenna Design.

Standard lead times apply.



D'Urso Racetrack Work Table

Available in racetrack 36"x72", 42"x84", 48"x96"; 27.5"H.

Shown with White laminate top and Black legs. Designed by Joseph Paul D'Urso.

Standard lead times apply in White laminate only, Chrome or Black legs - quantity limit 1.

+ Also available with glides.



Reff Profiles™ Sliding Height-Adjustable Table

Available in round and soft square 36", 42"D; and soft rectangular 30"x48", 36"x54"D; 28"—43"H.

Shown with White laminate top and Medium Grey base. Designed by Brian Graham.

Standard lead times apply.



Currents® Height-Adjustable Desk

Available in Pinset 24"—30"H, or Handcrank 24"—34"H in a variety of straight, corner and extended tops.

Shown with Folkstone Grey laminate top and White base. Designed by Robert Reuter and Charles Rozier.

Essentials lead times apply — laminate only.

+ Also available with casters.



Antenna® Workspaces Pinset Height-Adjustable Desk

Available in 24", 27", 30", 36"D; 27.5"–36.5"H.

Shown with White laminate top and Black base. Designed by Antenna Design.

Essentials lead times apply – laminate only.



Antenna® Workspaces Rectangular Mobile Desk

Available in widths every six inches from 36" to 84"; 18", 24", 27", 30", 36"D; 23.5", 28.5"H.

Shown with Natural Maple laminate top and Dark Grey legs.

Designed by Masamichi Udagawa and Sigi Moeslinger.

Essentials lead times apply – laminate only.

+ Also available with casters; extension tops optional.



Antenna® Simple Mobile Table

Available with continuous power capability in a wide variety of sizes and shapes including rectangle, round, square and track. 28.5"H.

Shown with Light Ash laminate top and Soft Grey legs. Designed by Masamichi Udagawa and Sigi Moeslinger.

Essentials lead times apply – laminate only.

+ Also available with glides; linking feature and modesty optional.



Propeller® Training Table

Available with easy ganging mechanism in a variety of sizes and shapes including rectangle, square, semi-circle, and return. 25.8"H.

Shown with White laminate top, flat edgeband and Anodized Aluminum legs. Designed by Emanuela Frattini.

Essentials lead times apply in laminate only - quantity limit 10.

+ Also available with glides; Plexus and grommet optional.



Upstart® Plannable Table

Available in variety of sizes and shapes including rectangular, oval, corner, extended corner, half round and P-shape. 27.75"–32.75"H.

Shown with Natural Maple laminate top and White legs.

Designed by Robert Reuter and Charles Rozier.

Essentials lead times apply – laminate only.

+ Also available with linking feature; glides optional.



Upstart® Table

Available in variety of sizes and shapes including rectangular, oval, tripod, corner, wiper, half round and round. 25"–30"H.

Shown with Classic Oak laminate top and Pumice legs. Designed by Robert Reuter and Charles Rozier.

Essentials & EssentialsNow Quickship lead times apply.

+ Also available with linking feature; glides optional.

Occasional Tables



Pixel™ Column Leg Table **NEW**

Available in 36"D round, 30"D square; 23.5"H. Shown in White. Designed by Marc Krusin. Essentials lead times apply in limited finishes - quantity limit 20.
+ Also available with cutout and electrical.



Piton™ Side Table **NEW**

Available in 16.25"x16.25", 21.25"H with Teak and Ebonized Ash top in a variety of base colors. Designed by Edward Barber and Jay Osgerby. Shown in Teak with Medium Metallic base. Essentials lead times apply in all standard finishes - quantity limit 10.
+ Also available as Stool.



Laccio Table

Available in coffee table 53.5"x19", 13.5"H; and side table 21.75"x19", 17.75"H. Shown with White and Black laminate top and Polished Chrome frame. Designed by Marcel Breuer. Essentials lead times apply in Black and White laminate only – quantity limit 2.



Saarinen Table

Available in round coffee table 35.75"W, 15.25"H; oval coffee table 41.25"x27.5", 15.25"H; round side table 20"W, 20"H; and round low side table 20"W, 13.75"H. Shown in White round coffee table. Designed by Eero Saarinen. Essentials lead times apply in White only - quantity limit 2.



Barcelona® Table

Available in 40"x40", 18.5"H. Shown in Chrome with clear glass. Designed by Ludwig Mies van der Rohe. Essentials lead times apply in Chrome with clear glass only – quantity limit 4.



Dividends Horizon® Low X-Base Table

Available in round, square and rounded square 30", 36", 42", 48"D; 17", 21"H. Shown in White. Designed by Jeffrey Bennett and Nicholas Dodziuk. Essentials lead times apply – laminate only.



Toboggan® Bench

Available in 15.8"x56", 15.8"H. Shown in Grey Stained Oak and Jet Black frame. Designed by Masamichi Udagawa and Sigi Moeslinger. Standard lead times apply.
+ Also available in single Seat.



Toboggan® Pull Up Table

Available in 18.2"x16.4", 24.5"H. Shown in Medium Grey. Designed by Masamichi Udagawa and Sigi Moeslinger. Standard lead times apply.



Stone Coffee Table

Available in 42"x29.5", 11"H without seat pad in Chartreuse, Blue, Warm Red and Silver. Outdoor friendly. Designed by Maya Lin. Shown in Silver. Essentials lead times apply - quantity limit 5.



Power Cube

Available in square 24" or 36", 13"H with writable surface; hard-wired, cord-set, and non-powered. Shown hard-wired. Essentials lead times apply - quantity limit 5.
+ Also available with USB ports; magnetic marker cup optional.



Antenna® Workspaces Low Table

Available in round 42"; and square 30"; 18.5", 24.5"H. Shown in White. Designed by Masamichi Udagawa and Sigi Moeslinger. Essentials lead times apply – laminate only.



Krusin Table

Available in coffee table 36"x36"; 10", 14"H; side table 18"x18"; 18", 22"H; and end table 24"x24", 14"H. Shown in Burnt Walnut. Designed by Marc Krusin. Standard lead times apply - quantity limit 5.
+ Also available in Beech, Light Cherry and Ebonized.



D'Urso Low Table

Available in round 42"W, 27.5"H.

Shown with White laminate top and Polished Chrome legs. Designed by Joseph Paul D'Urso. Standard lead times apply in White laminate only, Chrome or Black legs - quantity limit 1.

+ Also available with casters.



Petal® Coffee Table

Available in 42" round, 15"H. Designed by Richard Schultz.

Shown in White.

Standard lead times apply with White base and HDPE top – quantity limit 5.



1966 Table

Available in end table 18"x18"; and coffee table 38"x60", 28"H. Outdoor friendly.

Shown in White. Designed by Daniel Stromborg.

Standard lead times apply in White only – quantity limit 10.

Storage

EssentialsNow
Quick Ship
available. Applies to
limited finishes and
options only.
Quantity limit 25.

The wide range of Knoll storage styles are represented here by the simple mobile pedestal.

*See Essentials CAP/Price List for additional configurations available at Essentials lead times.

Legend

- | | | |
|-----------------------------------|------------------------|----------------------------|
| FP Floorstanding Pedestals | CR Credenzas | LO Lockers |
| MP Mobile Pedestals | TO Towers | WA Wardrobes |
| DW Doublewide Pedestals | CB Cabinets | OH Overhead Storage |
| LF Lateral Files | BK Bookcases | ST Stackers |
| | HY Hybrid Units | |



12\"W Anchor® NEW
FP MP DW CR TO LO OH ST
Shown with Walnut laminate case and White laminate front.
Essentials lead times apply.



Anchor®
FP MP DW CR TO LO OH ST
Shown in Walnut laminate.
Essentials lead times apply.



Series 2™ with Template Laminate front NEW
FP MP DW TO
Shown with White case and Walnut laminate front.
Essentials lead times apply.



Series 2™
FP MP DW TO
Shown in White paint.
Essentials lead times apply.



Series 2™ with Currents front
FP MP DW TO
Shown in Black paint.
Essentials lead times apply.



Series 2™ with Recessed Pull
FP MP DW TO
Shown in Silver paint.
Essentials lead times apply.



Series 2™ with Template™ front
FP MP DW TO
Shown in Silver paint.
Essentials lead times apply.



Series 2™ with Morrison front
FP MP DW TO
Shown in Black paint.
Essentials lead times apply.



Calibre®
FP MP LF TO CB BK HY WA
Shown in White paint.
Essentials lead times apply. EssentialsNow Quickship lead time applies to 2-, 3-, 4-, 5-high lateral files with 12" drawers only.



AutoStrada®
FP MP DW CR TO CB BK WA OH
Shown in White paint.
Essentials lead times apply – laminate and V412, V319, V417, V414 only.



Reff Profiles™
FP MP DW CR TO CB BK LO WA OH
 Shown in Old English Walnut veneer.
 Essentials lead times apply – laminate and
 V412, V319, V417, V414 only.



Antenna® Workspaces with Insert Pull
FP MP DW TO CB BK LO WA OH
 Shown in White paint.
 Lead times vary.*



Antenna® Workspaces with Edge Pull
FP MP DW TO CB BK LO WA OH
 Shown with Silver case and Walnut laminate
 fronts.
 Lead times vary.*



Antenna® Workspaces with Loop pull
FP MP DW TO CB BK LO WA OH
 Shown in Black paint
 Lead times vary*

Think beyond storage and imagine exciting new ways to impart privacy and organize space, maximizing every inch of the available footprint.



Anchor Digital Keypad Lock



12"W Anchor Slide Out Pedestal



12"W Anchor Hinged Door Pedestal with coat hook

New and Notable



NEW Anchor storage collection available at Essentials lead times.

Storage Solutions for Small Footprints



12"W Anchor storage available in stackers, lockers, mobile and floorstanding pedestals.
Essentials lead times apply.



NEW Laminate front storage, shown on Calibre Lateral Files, available at Essentials lead times.

+ Also available on Series 2 and Template storage.



Reff Profiles (shown) and AutoStrada storage in veneer at Essentials lead times - V412, V319, V417, V414 only.

+ Also available in laminate.



Interpole storage available in shelves and sliding door cabinets.

Standard lead times apply.



15"D Template storage with dual-sided access is modular – design a compact solution tailored to you. Essentials lead times apply - paint and laminate only.

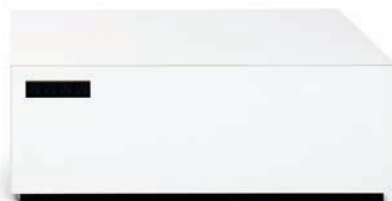
+ Also available with desktop power/data access.

Enhanced Power and Data



Power Disc **NEW**

9" round. Charges up to six devices with surge protection. Available in White. Designed by Antenna Design. Essentials lead times apply – quantity limit 25.



Power Cube

Available in square 24" or 36", 13"H with writable surface; hard-wired, cord-set, and non-powered. Shown hard-wired.

Essentials lead times apply - quantity limit 5.

+ Also available with USB ports; magnetic marker cup optional.



Interpole™

Available with convenient power access at lounge, table height or standing height; as well as conduit from ceiling to Knoll systems and desks. Designed by Antenna Design.

Standard lead times apply.

+ Also available with monitor mount, clip, hook, storage; fabric, glass and laminate whiteboard.



Horsepower™ **NEW**

Available with convenient power and USB outlets in linked and independent compact structures. Shown linked with screens. Designed by Antenna Design.

Standard lead times apply.

+ Also available with structure for video display and whiteboards.



Service Wall and Fence

High-performance spine delivers unsurpassed power and data management. Available in 48", 60", 72"W; 21", 25", 28.5", 39", 48"H with painted or laminate covers on Fence; 2+2 and 3+3 electrical.

Essentials lead times apply.

+ Also available with Desktop Outlet Center, Cable Baskets and Vertical Infeed.



Technology Support

EssentialsNow
Quick Ship
available. Applies to
limited finishes and
options only.
Quantity limit 25.

Sapper Monitor Arm Collection



Sapper™ Monitor Arm Collection

Available in a variety of mast heights, arm styles and mounting options for one to eight monitors or flat screen TV up to 50 lbs in Bright White, Jet Black, Medium Grey and Silver. Designed by Richard Sapper.

Essentials lead times apply.

+ Also available in select models on EssentialsNow Quickship.

Sapper XYZ Monitor Arm Series



Sapper XYZ® Series

Pneumatic adjustment available in Single or Crossbar for dual monitors in Bright White, Jet Black, Medium Grey and Silver. Designed by Richard Sapper.

Essentials lead times apply.

+ Also available in select models on EssentialsNow Quickship.

CPU Holders



Adjustable Sling CPU Holder **NEW**

Adjusts to hold CPU 6" to 10"W, 14" to 24"H.

Essentials lead times apply.

Adjustable CPU Holder (shown above right)

Adjusts to hold CPU 3.5" to 9.3"W, 13.5" to 22.5"H.

Essentials lead times apply.



Keyboard Supports



Adjustable Keyboard Support **NEW**

Available in three platform and mechanism options in Black with five track lengths.

Essentials lead times apply.

+ Also available with dual pivot option on Advanced Easy Lift and Sit/Stand mechanisms.

Desktop Management

 **EssentialsNow**
Quick Ship
available. Applies to
limited finishes and
options only.
Quantity limit 25.



Smokador™ Executive Rectilinear Collection

Available in Black Oxide, shown.

Essentials lead times apply.

Top row, left to right: Single Letter Tray; Double Letter Tray; Memo Box.

Middle row, left to right: Round Clip Cup, Round Pencil Cup, Business Card Holder.

Bottom row, left to right: Desk Pad; Rectilinear Wastebasket (24-quart capacity).



Orchestra®

Available in Soft Grey, Medium Grey, Black and Clear, shown.

Essentials lead times apply.

+ Also available in select models on EssentialsNow Quickship – Clear and Black only.

Top, left to right: Slanted Sorter; Side Letter Tray; Memo Tray; Utility Tray; Pencil Cup; Tape Dispenser; File Sorter.

Bottom, left to right: Two-Way Binder Bin; Vertical Paper Rack; Recycling Bin.

Not shown: Racetrack Desk Pad, 30"x18"D; Telephone Shelf; Wastebasket (24-quart capacity).

Lighting


**EssentialsNow
Quick Ship**
available. Applies to
limited finishes and
options only.
Quantity limit 25.

KnollExtra LED Light Series Available with three-stepped dimmer. Designed by Antenna Design.



Sparrow® Desktop Light

Available in freestanding base, table clamp and Antenna Workspaces Beam Side Mount. Black or White with stainless steel wire.

Essentials lead times apply.

+ Also available on EssentialsNow Quickship in Black only; occupancy sensor optional.



Highwire® Under-Cabinet Light

Available in 19", 37", 67" and 79" lengths in Silver or Black.

Essentials lead times apply.

+ Also available on EssentialsNow Quickship; interconnecting jumper and occupancy sensor optional.

Copeland Light



T-light

Available in 13" and 21"H and mounts on Antenna Workspaces center beam. 13 painted colors.

Essentials lead times apply.



Copeland Light™

Available in standard and compact sizes in Silver or Black. Designed by Stephan Copeland.

Essentials lead times apply.

+ Also available on EssentialsNow Quickship.

Communication Boards



Scribe® Mobile Markerboard

Available in Jet Black, Medium Grey, Bright White, Dark Red, and Slate Blue; 30", 36", 42", 48"W; 54"H. Includes 4 dry erase markers and microfiber eraser cloth.

Essentials lead times apply.

+ Also available with marker tray, marker cup, and optional paper pad mount options.

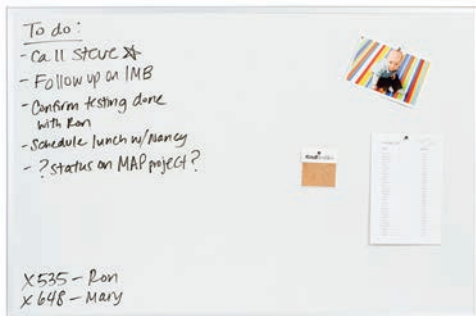


Interpole™

Available in translucent or opaque whiteboard glass, laminate whiteboard or combination laminate and tackable fabric. 36", 42", 48", 54", 60"W; 31.5", 48", 64.5"H.

Standard lead times apply.

+ Also available with marker cup.



Universal Markerboard

Available with Black or Aluminum frame; panel, load bar, top cap or wall mounting options; 24", 30", 36"W x 18"H; 30", 36", 42"W x 24"H; 42", 48"W x 30"H.

Essentials lead times apply.

+ Also available with marker tray.



Universal Fabric Board

Available in a variety of Knoll Textiles; 24", 30", 36", 42", 48", 60"W; 14", 16", 18", 20", 24"H.

Essentials lead times apply – preapproved Knoll Textiles only.

+ Also available with marker tray.

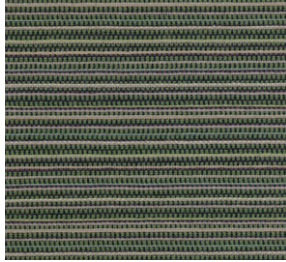
KnollTextiles and Leather

This selection of fabrics and leathers are those available at Essentials 4-week delivered lead time.

Visit knolltextiles.com and spinneybeck.com for color reference.

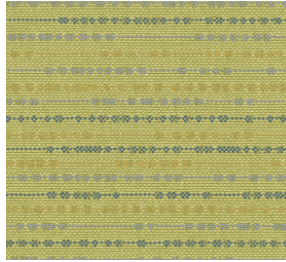
+ All other standard KnollTextiles fabrics and Spinneybeck leathers are available for order through Knoll Essentials at published standard lead times.

Grade A



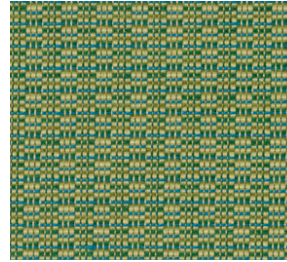
Alignment K349 🔥

- | | |
|--------------|-----------------|
| 1 Sand | 8 Indigo |
| 2 Straw | 9 Green Tea |
| 3 Earth | 10 Madder |
| 4 Paprika | 11 Blood Orange |
| 5 Aloe | 12 Harbor |
| 6 Flintstone | |
| 7 Aqua Shell | |



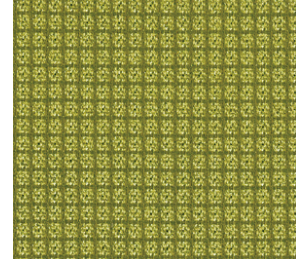
Bocce K1255 🔥

- | |
|----------|
| 2 Spring |
| 4 Picnic |
| 6 Harbor |
| 7 Spice |
| 8 Magic |



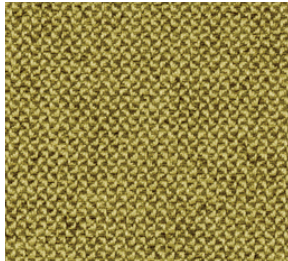
Chance K1552

- | | |
|----------|-----------|
| 1 Gust | 7 Moonlit |
| 2 Sable | 8 Sailor |
| 3 Fern | 9 Bear |
| 4 Autumn | 10 Tide |
| 5 Flash | |
| 6 Regal | |



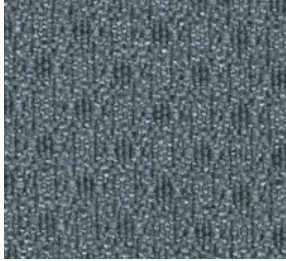
Commuter Cloth K1778

- | | |
|---------------|--------------|
| 1 White Cap | 9 Balloon |
| 2 Icicle | 10 Eve |
| 3 Cobblestone | 11 Boulevard |
| 4 Slicker | 12 Whistle |
| 5 Lime | 13 Puddle |
| 6 Cabana | |
| 7 Clementine | |
| 8 Sorbet | |



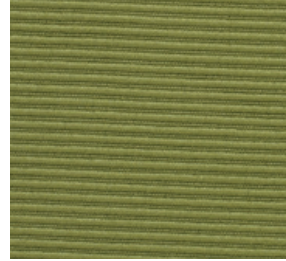
Hourglass K1523

- | | | |
|-------------|-------------|-----------|
| 1 Air | 11 Tart | 21 Bark |
| 2 Gull | 12 Jelly | 22 Mocha |
| 3 Sandbar | 13 Bluebird | 23 Galaxy |
| 4 Cork | 14 Liberty | 24 Misty |
| 5 Flax | 15 Indigo | 25 Iron |
| 6 Beeswax | 16 Spring | 26 Wire |
| 7 Tangerine | 17 Olive | 27 Alley |
| 8 Sunshine | 18 Aegean | 28 Caviar |
| 9 Sizzle | 19 Latte | |
| 10 Flame | 20 Almond | |



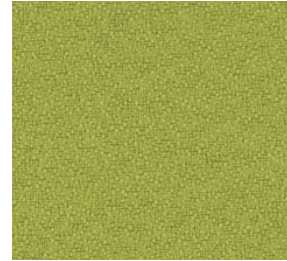
Mariner K642 🔥

- | |
|-------------|
| 5 Steel |
| 6 Black |
| 10 Wine |
| 14 Red |
| 29 Midnight |



Monarch K1149 🔥

- | | |
|-------------|---------------|
| 1 Ivory | 9 Brick |
| 3 Ginger | 12 Rainforest |
| 4 Carob | 16 Black |
| 6 Royal | |
| 7 Atlantic | |
| 8 Tangerine | |



Presto* K1000 🔥 🚚

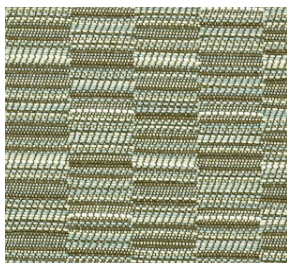
- | | |
|----------------|------------------|
| 1 Winter White | 10 Olive |
| 2 Sand | 11 Navy Blue |
| 3 Stone | 12 Clear Grey |
| 4 Saffron | 13 Charcoal Grey |
| 5 Spring Green | 14 Black Tie |
| 6 Blue Chip | |
| 7 Scarlet | |
| 8 Red Carpet | |
| 9 Beige Taupe | |



Sonnet K1460

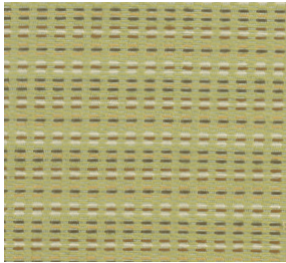
- | | |
|------------|----------------|
| 1 Ivory | 9 Butterscotch |
| 2 Cane | 10 Cedar |
| 3 Gold | 11 Pumice |
| 4 Apple | 12 Tornado |
| 5 Kelp | |
| 6 Sierra | |
| 7 Denim | |
| 8 Mulberry | |

Grade B



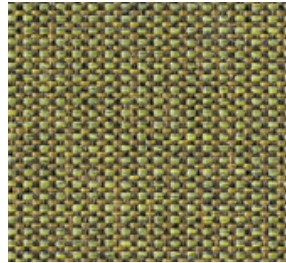
Stacks K528 🔥

- | |
|---------|
| 3 Tread |
| 5 Grape |
| 6 Wave |
| 7 Glass |



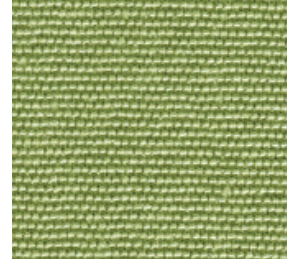
Belize K1165

- | |
|---------------|
| 1 Sand Dollar |
| 2 Abalone |
| 3 Surf |
| 4 Palm |
| 5 Clown Fish |
| 6 Tropical |
| 8 Cove |



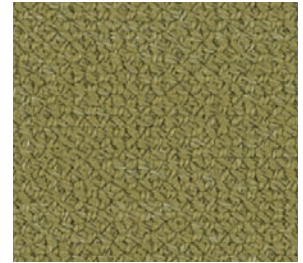
Boundary K1828

- | | |
|---------------|-----------|
| 1 Canvas | 8 Caramel |
| 2 Lace | 9 Grey |
| 3 Grasshopper | 10 Pewter |
| 4 Leaf | |
| 5 Denim | |
| 6 Autumn | |
| 7 Varnish | |



Chroma K345 🔥 🚚

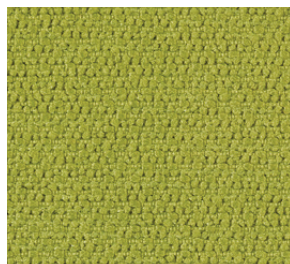
- | | |
|-----------|---------------|
| 1 Quartz | 11 Navy |
| 3 Papaya | 14 Cyan |
| 4 Topaz | 15 Eucalyptus |
| 5 Cayenne | 16 Moss |
| 6 Cherry | 18 Lime |
| 7 Currant | 19 Silver |
| 8 Plum | 20 Gunmetal |
| 9 Mink | |
| 10 Onyx | |



Ferry K1828

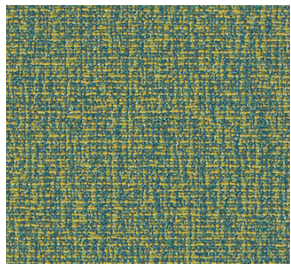
- | | |
|------------------|------------|
| 1 Whitehall | 8 Red Hook |
| 2 Edgewater | 9 Warren |
| 3 Highlands | 10 Marin |
| 4 Liberty Harbor | |
| 5 Port | |
| 6 Newport | |
| 7 Belford | |

Grade B continued



Journey K1806

- | | |
|------------|-------------------|
| 1 Mitten | 11 Plum |
| 2 Jingle | 12 Forecast |
| 3 Beach | 13 Wavelength |
| 4 Twist | 14 Arcade |
| 5 Canyon | 15 Flight |
| 6 Allspice | 16 Chime |
| 7 Avocado | 17 Mushroom |
| 8 Aqua | 18 Dark Chocolate |
| 9 Hot Pink | |
| 10 Banner | |



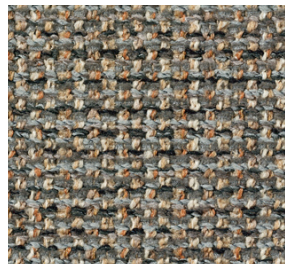
Ludlow K1998

- | |
|-------------|
| 1 Reed |
| 2 Squash |
| 3 Valley |
| 4 Sparkling |
| 5 Beet |
| 6 Ale |
| 7 Mussel |



Lyric K698

- | |
|----------------|
| 2 Golden Oldie |
| 3 Brass Band |
| 4 Quartet |
| 9 Amplify |
| 11 The Blues |



Keaton K1596

- | | |
|-----------|------------|
| 1 Oak | 6 Harper |
| 2 Elm | 7 Pembroke |
| 3 Chalet | 8 Sherwood |
| 4 Topiary | |
| 5 Flora | |



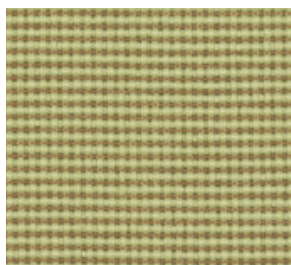
Night Life K181

- | |
|------------------|
| 1 Starstruck |
| 4 Peanut Gallery |
| 6 Paint the Town |
| 7 Cinema |
| 8 Noir |



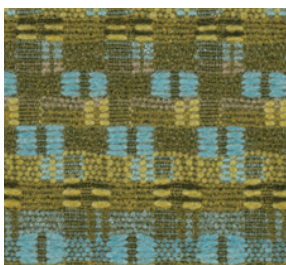
Ransom K1298

- | | |
|-----------|------------|
| 1 Captive | 9 Suspense |
| 3 Doyle | 10 Forfeit |
| 4 Loot | 11 Heist |
| 5 Forgery | 12 Spy |
| 6 Bail | 13 Holmes |
| 7 Motive | 14 Caper |
| 8 Thrill | |



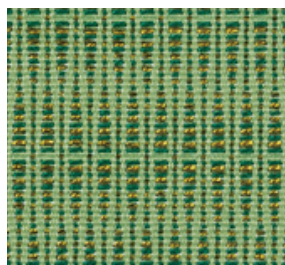
Ricochet K498 

- | | |
|----------|-------------|
| 1 Oyster | 13 Teal |
| 3 Straw | 16 Midnight |
| 5 Topaz | 17 Ebony |
| 6 Flash | |
| 8 Flame | |



Roam K1657

- | | |
|---------------|-----------|
| 1 Fizz | 6 Cosmo |
| 2 Mockingbird | 7 Gale |
| 3 Limelight | 8 Prairie |
| 4 Citron | 9 Fedora |
| 5 Swank | 10 Coffee |



Rush Hour K1824

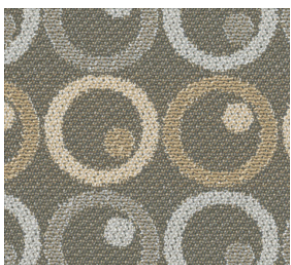
- | | |
|-------------|----------|
| 1 Hemp | 6 Walnut |
| 2 Ginseng | 7 Cobweb |
| 3 Okra | 8 Kettle |
| 4 Blue | |
| 5 Stoplight | |

Grade C



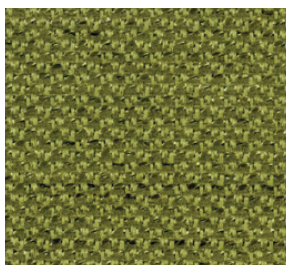
Classic Bouclé K162 

- | |
|------------|
| 7 Cayenne |
| 12 Onyx |
| 20 Neutral |



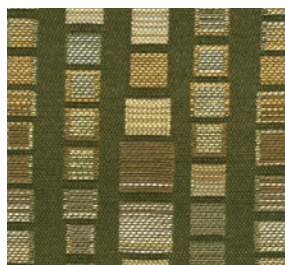
Hula Hoop K753 

- | |
|--------------|
| 3 Balloon |
| 4 Chalkboard |
| 7 At Night |



Sequin CR HC1009 

- | | |
|-------------|------------------|
| 1 Rosewater | 6 Tortoise Shell |
| 2 Canary | 8 Sapphire |
| 4 Bamboo | 10 Poppy |



Zari CR HC1008 

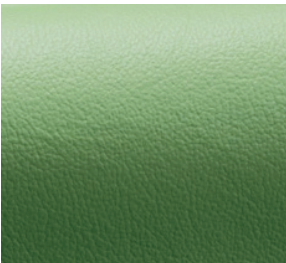
- | | |
|-------------|-------------|
| 1 Gem | 6 Tiger Eye |
| 2 Facets | 7 Onyx |
| 3 Fountain | 8 Batik |
| 4 Lotus | 9 Charm |
| 5 Butterfly | 10 Madras |

 Cal 133 approved on some Office Seating. See matrix to confirm.

* Presto is a base-grade fabric on EWC™ and Moment™ chairs.

CR Fabrics Nonchalant, Fox Trot, Sequin and Zari are made with Crypton®, a stain, moisture and bacteria resistant barrier. Finishes shown are here for reference only. Consult a Knoll dealer for an actual sample. Always check textile approvals on seating.

Leather and Vinyl Upholstery



LEATHER GRADE T

VZ *Spinneybeck®* *Vicenza Leather*
31 colorways
VZBLK 



LEATHER GRADE U

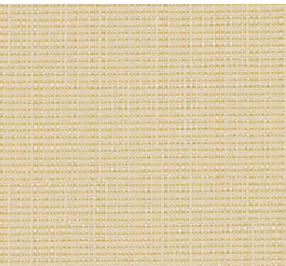
VO *Spinneybeck®* *Volo Leather*
56 colorways



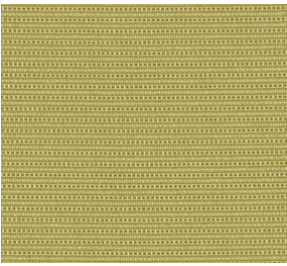
VINYL

K242 *Vinyl*
10 colorways
13, 17, 21 

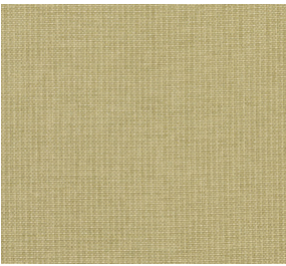
Panel Fabrics Grade 10



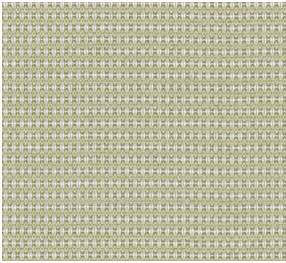
Annex W1360
8 colorways



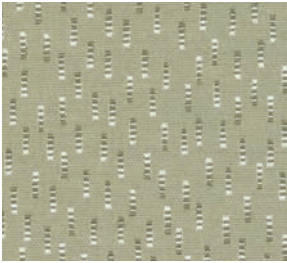
Beacon W1597
12 colorways



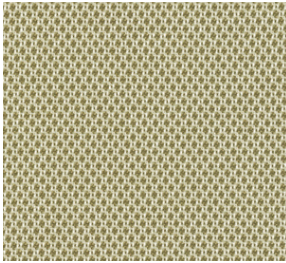
Element W1077
13 colorways



Growth Spurt W692
10 colorways

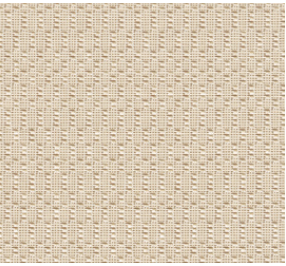


Symbolic Details W693
8 colorways



Versatility W432
11 colorways

Panel Fabrics Grade 20

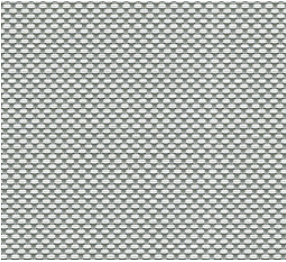


Nematic II W1620
6 colorways



Reflect W884A
12 colorways

Propeller Screen Fabric



Granite Screen



KnollTextiles Hourglass K1523
Essentials lead times apply.

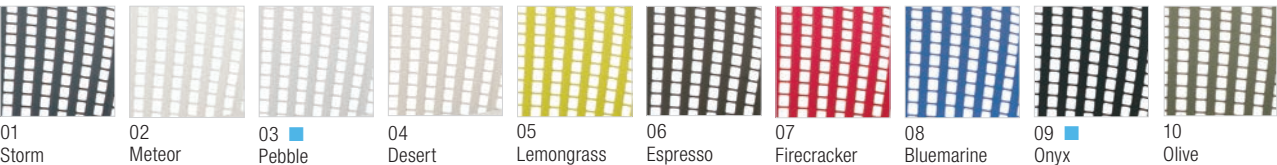
Finishes and Options

Work Chairs

Generation by Knoll®

- Options**
- Light or dark frame finish
 - Polished aluminum base
 - Three arm options or armless
 - Lumbar support

FLEX BACK NET COLORS



Base grade textile for Generation, ReGeneration and MultiGeneration chairs

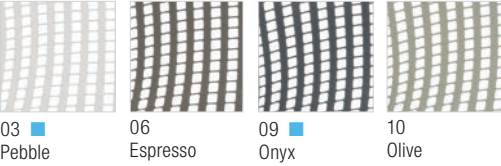
GENERATION FABRIC COLORS



ReGeneration by Knoll®

- Options**
- Flex Back Net or fully upholstered
 - Task and high task models
 - Polished aluminum base
 - Two arm options or armless
 - Lumbar support

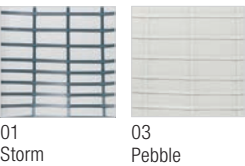
FLEX BACK NET COLORS



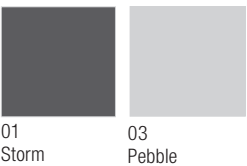
Remix®

- Options**
- Work and high back models
 - Polished aluminum base
 - Four arm options or armless
 - Lumbar support

FLEX NET MATRIX COLORS

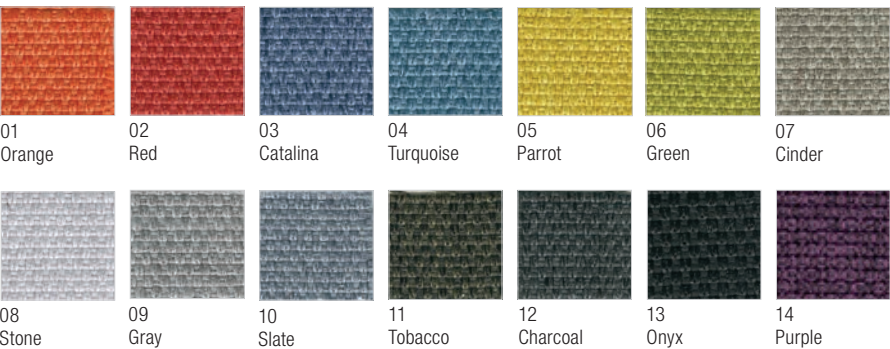


B-SIDE TEXTILE COLORS



Base grade textile for Remix and Remix side chairs

DELITE FABRIC COLORS

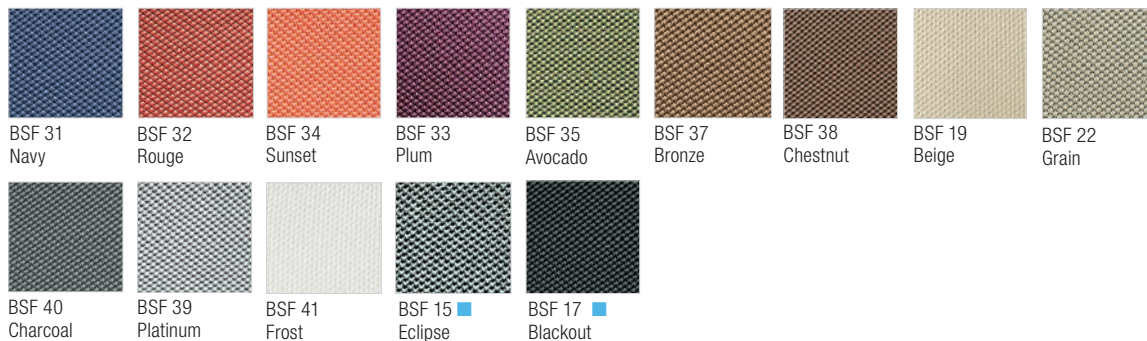


Life®

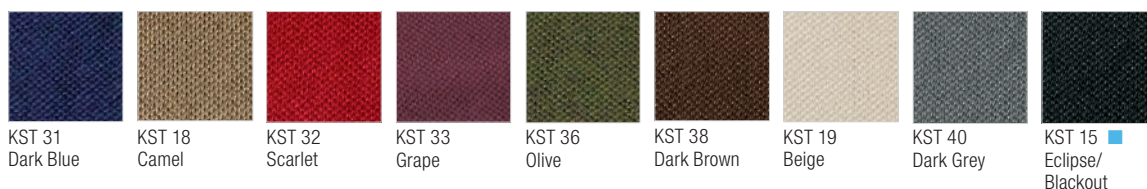
Options

- Four base finishes
- Three arm options or armless
- Back topper
- Lumbar support
- Headrest

BACK SUSPENSION FABRIC (BSF) COLORS



KNITTED SEAT TOPPER (KST) COLORS



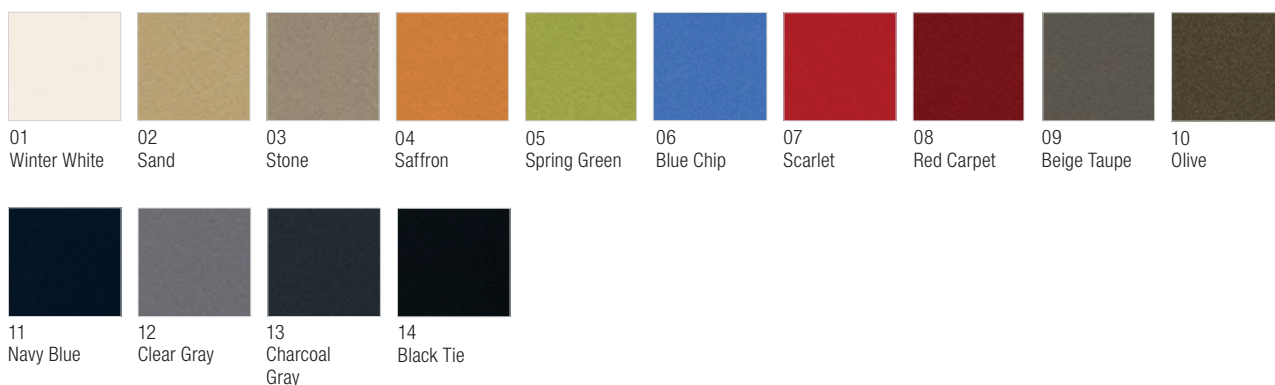
Base grade textile for EWC and Moment chairs

EWC Pro™

Options

- Polished aluminum base
- Two arm options or armless

PRESTO

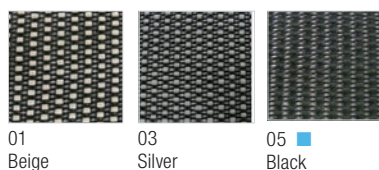


Chadwick®

Options

- Task and high task models
- Basic or tilt stop control
- Two arm options or armless

CHADWICK FABRIC COLORS



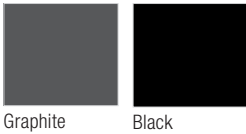
Finishes and Options

Side and Multi-Use Chairs

CHIP



Gigi®



k.™ lounge Options

- 11 modular elements

k. lounge Base Grade Fabric



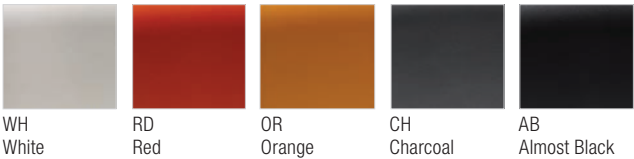
k. lounge available at Essentials lead times:

Green Tea, Blue Moon and Earl Grey
Available at Essentials lead times - quantity limit 10.

Heirloom Tomato
Available at Essentials lead time on k. lounge stool only - quantity limit 10.

Moment™

BACK FINISHES



FRAME FINISHES

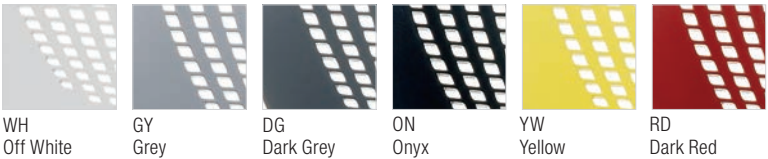


MultiGeneration by Knoll® Options

- Hybrid, stacking base and stool models
- Fixed arms or armless
- Seat pad
- Hard or soft casters or glides
- Tablet arm and book basket

Stool not available with arms, casters or tablet/basket

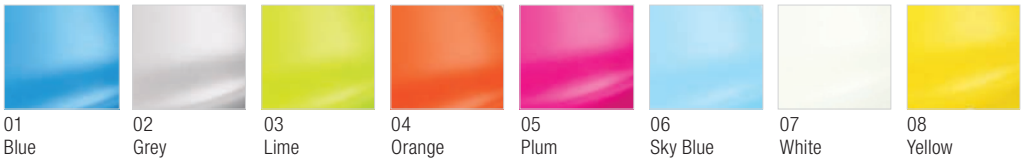
SHELL FINISHES



FRAME FINISHES



Olivares Aluminum Chair

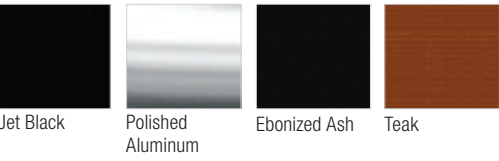


Piton™

BASE FINISHES



SEAT FINISHES



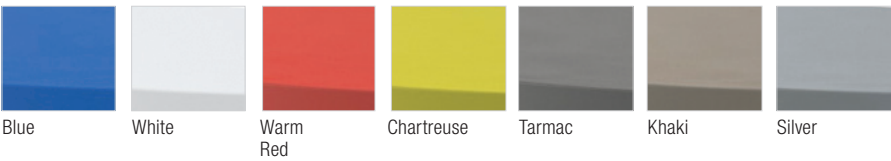
Spark® Series



Sprite



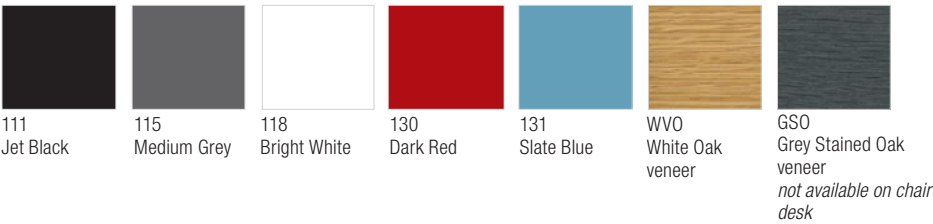
Stones



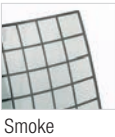
Toboggan®

Options
- chair desk,
pull-up table,
seat and bench
models

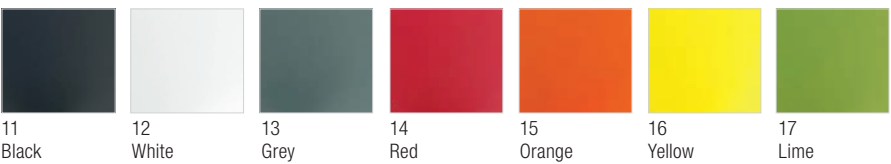
FRAME, SEAT AND TABLET FINISHES



X3



Washington Skin™



Wood Side Chairs:
Krusin, JR,
Ricchio,
Saarinen
Executive



Paints, Laminates and Veneers



Paints

CORE PAINTS

					
118 Bright White*	114 Folkstone Grey	115 Medium Grey*	113 Dark Grey	117 Soft Grey	112 Brown
					
111 Jet Black*	611 Beige Mist Metallic	613 Silver	612 Medium Metallic Grey	116 Sandstone	




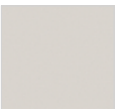

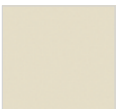
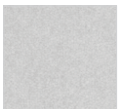
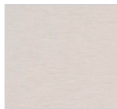



* Scribe Mobile Markerboard finishes

ANTENNA® WORKSPACES ACCENT PAINTS

	
130 Dark Red*	131 Slate Blue*

Laminates

LAMINATES

										
111 Jet Black†	114 Folkstone Grey†	115 Medium Grey†	117 Soft Grey†	118 Bright White†	119 Pumice†	121 Micro Grey	122 Brushed Sand	123 Brushed Grey	128 Fog†	129 Micro Sand

WOODGRAIN LAMINATES

										
124 Medium Cherry†	125 Natural Maple†	126 Natural Cherry†	127 Walnut†	139 Light Ash†	140 Warm Ash†	141 Whitened Ash†	142 Grey Ash†	143 Classic Oak†	144 Graphite Pear†	145 Zebra†

†Available in coordinating edgeband. Refer to Price List for specific product availability.

Veneers


V1 TECHWOOD VENEERS: AVAILABLE AT STANDARD LEAD TIMES



Y316
Maple




Y821
Blond Maple




Y811
Natural



Y831
Light Cherry



Y342
Medium Teak



Y329
Medium Oak



Y319
Cherry



Y881
Light Walnut



Y326
Dark Mahogany



Y323
Medium Walnut



Y883
Pangar Wenge



Y851
Black Oak




Y344
Espresso



Y882
Dove Grey

V2 NATURAL VENEERS:
AVAILABLE AT STANDARD LEAD TIMES



Y884
White Pine

V2 NATURAL VENEERS: AVAILABLE AT ESSENTIALS LEAD TIMES ON
REFF PROFILES AND AUTOSTRADA ONLY



V412
Natural Cherry



V319
Medium Cherry




V417
Old English Walnut




V414
Natural Oak


NATURAL VENEERS: AVAILABLE AT STANDARD LEAD TIMES ON PIXEL



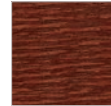
American Walnut



Natural Oak



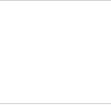
Ebonized Oak




Fumed Oak

Propeller Edgebands and additional finishes


PROPELLER® EDGEBANDS




118
Bright White
Training and
Conference,
Flat Edge




R6
Medium Grey
Training and
Conference,
Flat Edge




R5
Black
Training and
Conference,
Flat Edge



5
Training,
Molded Edge




4
Light Grey
Training,
Molded Edge



LJ
Brushed
Aluminum


PROPELLER® LEGS




A
Anodized
Aluminum

Pixel Edgebands and additional finishes


PIXEL® EDGEBANDS—FLAT OR MOLDED



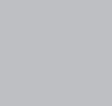
Black



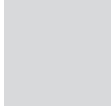
Mink



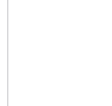
Innertone



Platinum

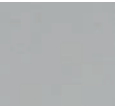


Folkstone



Bright White
(flat only)

PIXEL-ONLY LEG PAINTS



Sterling

Pixel finishes available
at Essentials lead times
on qualifying products:

Legs
Bright White 118
Jet Black 111

Tops
Bright White 118
Graphite Pear 144

Flat Edgeband
Folkstone
Black

Molded Edgeband
Folkstone
Black

Program Exceptions

May change periodically

Systems & Private Offices

Standard lead times apply to select products, options and finishes. For products at Essentials four-week lead time refer to Essentials CAP/Exchange Product Search Specifier.

Antenna Workspaces Fence Frames, Crown Top Caps
Quantity limit 25 at four-week lead time.

Antenna Workspaces Powder Glass Screens
Quantity limit 10 at four-week lead time.

AutoStrada Frameless Glass, Trim
Quantity limit 10 at four-week lead time.

AutoStrada Panels
Standard lead times apply.

AutoStrada Worksurfaces, Medians & Bridges
Quantity limit 25 at four-week lead time.

AutoStrada Window Kits for Bridges
Standard lead times apply.

Horsepower
Standard lead times apply.

Interpole
Standard lead times apply.

Reff Profiles Classic & Preconfigured Desking
Quantity limit 25 at four-week lead time.

Reff Profiles & AutoStrada Mid-Span Brackets
Quantity limit 25 at four-week lead time.

Reff Profiles Panels
Standard lead times apply.

Reff Profiles Peninsula 1½"
Standard lead times apply.

Reff Profiles Transaction Tops & Gallery Surrounds
Quantity limit 25 at four-week lead time.

Tables

Standard lead times apply to select products, options and finishes. For products at Essentials four-week lead time refer to Product Index pg.62-91, Essentials CAP/Exchange Product Search Specifier.

1966 Collection
Quantity limit 10 at KnollStudio lead time in White only.

Antenna Telescope
Standard lead times apply.

AutoStrada Tables
Quantity limit 25 at four-week lead time.

Barcelona Table
Quantity limit 4 at four-week lead time.

D'Urso Work Tables
Quantity limit 1 at KnollStudio lead time in White only.

Krusin Occasional Tables
Quantity limit 5 at KnollStudio lead time.

Laccio Tables
Quantity limit 2 at four-week lead time in Black and White only.

LSM Tables
Quantity limit 1 at KnollStudio lead time.

Petal Coffee Table
Quantity limit 5 at KnollStudio lead time.

Piton Side Table
Quantity limit 10 at four-week lead time.

Pixel Tables: 4-Leg Square & Rectangular, Column Leg Round & Square, C-Leg Fixed & Flip Top
Quantity limit 20 at four-week lead time in limited finishes.

Pixel Tables: Y-Leg, T-Leg, Pinset & Height-Adjustable
Standard lead times apply.

Power Cube
Quantity limit 5 at four-week lead time.

Propeller Tables
Quantity limit 10 at four-week lead time.

Reff Profiles Tables
Quantity limit 25 at four-week lead time.

Reff Profiles Height-Adjustable Tables
Standard lead times apply.

Saarin Side, Coffee & Dining Tables
Quantity limit 2 at four-week lead time in White only.

Stone Coffee Table
Quantity limit 5 at four-week lead time.

Stromborg Tables
Quantity limit 4 at KnollStudio lead time in White only.

Toboggan Pull Up Table & Bench
Standard lead times apply.

Tone Height-Adjustable Tables
Quantity limit 10 at four-week lead time in Black, White and Silver base only.

Universal Adjustable Tables
Quantity limit 25 at four-week lead time in Silver, White and Black base only.

Storage

Standard lead times apply to select products, options and finishes. For products at Essentials four-week lead time refer to Product Index pg.62-91, Essentials CAP and Exchange Product Search Specifier.

Antenna Workspaces Storage
Standard lead times may apply, consult reference materials.

AutoStrada Storage
Quantity limit 25 at four-week lead time.

Currents Storage Cabinets
Quantity limit 10 at four-week lead time.

Reff Profiles Overheads, Cubbies & Pedestal Credenzas
Quantity limit 25 at four-week lead time.

Reff Profiles & AutoStrada Reuter Overhead Storage
Standard lead times apply.

Seating

Standard lead times apply to select products, options and finishes. For products at Essentials four-week lead time refer to Product Index pg.62-91, Essentials CAP/Exchange Product Search Specifier.

1966 Dining & Lounge Chair
Quantity limit 10 at KnollStudio lead time in White only.

Barcelona Lounge Seating
Quantity limit 4 at four-week lead time.

Bertoia Side Chair & Stool
Quantity limit 10 at four-week lead time.

Bertoia Diamond Chair
Quantity limit 10 at four-week lead time.

CHIP Chair
Quantity limit 10 at four-week lead time.

D'Urso Contract Small Sofa & Ottoman
Quantity limit 4 at KnollStudio lead time.

D'Urso Swivel Lounge Chair
Quantity limit 2 at four-week lead time.

Gigi Stacking, Swivel Chair & Stool
Quantity limit 25 at four-week lead time in Graphite or Black only.

Jamaica Bar & Counter Stools
Quantity limit 25 at four-week lead time.

Jamaica Low Stool
KnollStudio lead times apply.

Jehs+Laub Lounge Chair & Ottoman
Quantity limit 2 at KnollStudio lead time.

JR Chair
Quantity limit 25 at four-week lead time.

k. lounge
Quantity limit 10 at four-week lead time in limited finishes.

Krefeld Lounge
Quantity limit 4 at KnollStudio lead time.

Krusin Side & Lounge Chair
Quantity limit 10 at four-week lead time.

Piton Stool
Quantity limit 10 at four-week lead time.

Olivares Aluminum Chair
Quantity limit 25 at KnollStudio lead time.

Ricchio Chair
Quantity limit 25 at four-week lead time.

Saarin Executive Chairs
Quantity limit 4 at four-week lead time.

Spark Series Side & Lounge Chair
Non-upholstered only.
Quantity limit 10 at four-week lead time.

Sprite Chair
Quantity limit 10 at four-week lead time.

Stones
Quantity limit 5 at four-week lead time.

Suzanne Lounge
Quantity limit 10 at KnollStudio lead time.

X3 Stacking Chair
Quantity limit 10 at four-week lead time in Smoke and Clear Grey only.

Toboggan Chair Desk, Seat & Bench
Standard lead times apply.

Washington Skin Nylon Chair
KnollStudio lead times apply.

Accessories

Copeland Light
Quantity limit 25 at four-week lead time.

Highwire
Quantity limit 25 at four-week lead time.

Power Disc
Quantity limit 25 at four-week lead time.

Sparrow Desktop Light
Quantity limit 25 at four-week lead time.

T-Light
Quantity limit 25 at four-week lead time.

KnollTextiles® Fabrics and Spinneybeck® Leathers

All standard KnollTextiles fabrics and Spinneybeck® leathers are available for order through Knoll Essentials at published standard lead times at the time of order. Only Essentials approved fabrics and leathers are available for four-week delivery - consult KnollTextiles & Leather pg.92-94.

Veneer

Four-week lead time applies to four select V2 Natural veneers on qualifying Reff Profiles and AutoStrada products only - consult Veneers pg.101; otherwise published standard lead times apply to veneer finishes.

Sustainability Information

Virtually all Knoll office systems, private offices, seating and storage are BIFMA level® 3 certified—the highest level of industry certification. In addition, all Knoll furniture is available with 100% recycled content fabric and, along with KnollExtra accessories, is GREENGUARD Indoor Air Quality Certified®, and can contribute to achieving LEED® credits.

Open Plan

Antenna Workspaces

BIFMA level 3 certified
GREENGUARD Indoor Air Quality and GREENGUARD for Children & SchoolsSM Certified

Currents

BIFMA level 3 Certified
GREENGUARD Indoor Air Quality Certified

Dividends Horizon

BIFMA level 3 Certified
GREENGUARD Indoor Air Quality Certified

Morrison

BIFMA level 3 Certified
GREENGUARD Indoor Air Quality Certified

Reff Profiles

BIFMA level 3 Certified
GREENGUARD Indoor Air Quality Certified

Template

BIFMA level 3 Certified
GREENGUARD Indoor Air Quality Certified
SMaRT® Sustainable Gold Certified

Private Offices

Antenna Workspaces

BIFMA level 3 certified
GREENGUARD Indoor Air Quality and GREENGUARD for Children & Schools certified

AutoStrada

BIFMA level 3 Certified
GREENGUARD Indoor Air Quality Certified

Dividends Horizon

BIFMA level 3 Certified
GREENGUARD Indoor Air Quality Certified

Reff Profiles

BIFMA level 3 Certified
GREENGUARD Indoor Air Quality Certified

Template

BIFMA level 3 certified
GREENGUARD Indoor Air Quality Certified
SMaRT Sustainable Gold Certified

Seating

Chadwick

BIFMA level 3 Certified
SMaRT Sustainable Gold Certified
GREENGUARD Certified
GREENGUARD Gold Certified

Essentials Work Chairs

BIFMA level 3 Certified
GREENGUARD Certified
GREENGUARD Gold Certified

Generation by Knoll

BIFMA level 3 Certified
SMaRT Sustainable Platinum Certified
GREENGUARD Certified
GREENGUARD Gold Certified

Life

BIFMA level 3 Certified
SMaRT Sustainable Gold Certified
GREENGUARD Certified
GREENGUARD Gold Certified

Moment

BIFMA level 3 Certified
SMaRT Sustainable Gold Certified
GREENGUARD Certified
GREENGUARD Gold Certified

MultiGeneration by Knoll

BIFMA level 3 Certified
SMaRT Sustainable Gold Certified
GREENGUARD Certified
GREENGUARD Gold Certified

ReGeneration by Knoll

BIFMA level 3 Certified
SMaRT Sustainable Platinum Certified
GREENGUARD Certified
GREENGUARD Gold Certified

Remix

BIFMA level 3 Certified
GREENGUARD Certified
GREENGUARD Gold Certified

Toboggan Chair Desk, Pull Up, Seat and Bench

BIFMA level 2 Certified
GREENGUARD Certified
GREENGUARD Gold Certified

KnollExtra Accessories

Copeland Light

GREENGUARD Indoor Air Quality Certified
Manufactured using 75% recycled material

LED Collection

Pending BIFMA level certification
GREENGUARD Indoor Air Quality Certified

Scribe Mobile Markerboard

GREENGUARD Indoor Air Quality Certified
Manufactured using FSC-certified MDF core

Sapper Monitor Arm Collection

GREENGUARD Indoor Air Quality Certified
Manufactured with 95% recyclable material

Sapper XYZ

GREENGUARD Indoor Air Quality Certified
Manufactured with 63% recycled content,
85% recyclable material

Tables

Antenna Workspaces

BIFMA level 3 Certified
GREENGUARD Indoor Air Quality Certified

AutoStrada

BIFMA level 3 Certified
GREENGUARD Indoor Air Quality Certified

Dividends Horizon

BIFMA level 3 Certified
GREENGUARD Indoor Air Quality Certified

Propeller

GREENGUARD Indoor Air Quality Certified

Upstart

BIFMA level 3 Certified
GREENGUARD Indoor Air Quality Certified

Files and Storage

Anchor

GREENGUARD Indoor Air Quality Certified

Calibre

BIFMA level 3 Certified
GREENGUARD Indoor Air Quality Certified
SMaRT Sustainable Gold certified

Series 2 Storage

BIFMA level 3 Certified
GREENGUARD Indoor Air Quality Certified

Lounge Seating

Krusin Lounge

GREENGUARD Indoor Air Quality Certified

Spark Series

GREENGUARD for Children & Schools Certified

Textiles

Many KnollTextiles fabrics contain recycled content or natural fiber and most are GREENGUARD Indoor Air Quality Certified. Visit knolltextiles.com for details.



ESSENTIALS *to inspire* YOUR BEST WORK

Knoll offers the essentials you need to create primary work areas dedicated to individuals, as well as activity spaces where workers can gather or go think—all to support and inspire your people to do their best work. Even better, most of these easy-to-order products can be ready to install in just four weeks. Connect with your Knoll dealer to bring your next work environment to life.

knoll.com/essentials



Knoll®

1235 Water Street, East Greenville, PA 18041 800 445-5045 knoll.com

© 2016 Knoll, Inc. All rights reserved. B-ES16