

# HON

**Solve™**  
Seating

THE ANSWER  
FOR COMFORT  
AND VERSATILITY





#### **ilira®-stretch Mesh Back**

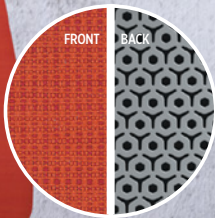
This unique mesh material moves in four directions to provide responsive, multidirectional lumbar support. The soft nature of the mesh envelops users in hammock-like comfort, while providing the ideal level of support throughout the day.



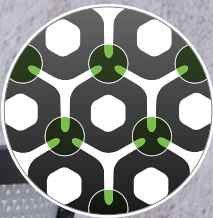
## **A Single Solution For Everywhere And Everybody**

Supporting the ergonomic and functional needs of a variety of users throughout your space requires a flexible seating platform that allows everyone to customize their comfort. With three back materials, three ergonomic controls and an optional adjustable lumbar support, Solve answers the need for a higher level of personalization. The synchronized seat and back move in harmony with the user to provide continuous comfort that can be customized. Solve helps anyone achieve optimal balance, proper alignment and lumbar support, making it an ideal solution for everywhere and everybody.





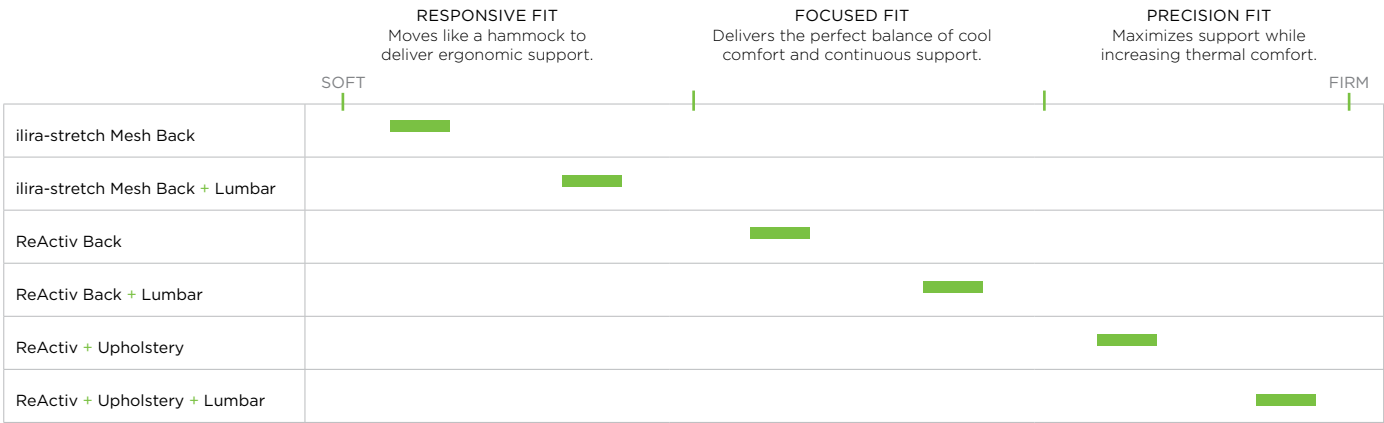
**Upholstered ReActiv™ Back**  
Utilizing all the comfort and supportive benefits of the ReActiv back, the upholstered version features a fabric cover over the hexagonal back design. This provides additional support, a more conservative aesthetic and greater design variety.



**ReActiv Back**  
The distinctive ReActiv hexagonal design features dozens of intersecting nodes that flex independently and move with the user's body to deliver continuous support and comfort, while allowing air to flow through the back.

**PERSONALIZED COMFORT**

Solve offers three unique back materials and an optional adjustable lumbar support, allowing each user to achieve a personalized level of ergonomic support and comfort.







## DAY LONG COMFORT

As work evolves, people are becoming more mobile, moving from individual to collaborative work at a moment's notice. This change requires a high performance seating solution designed to adapt to each user's body type. Solve's responsive design adapts intuitively to the user's movements to provide continuous comfort. With this level of advanced comfort and ergonomic support, consider your search for a universal task seating solution solved.



#### WORKSTATION

Features such as the seat glide and waterfall seat edge enhance natural movement and increase leg circulation to support users comfortably at their workstations throughout the day.



#### CONFERENCE

Responding intuitively to user movements allows Solve to provide immediate comfort for a variety of people in collaborative spaces.



#### TRAINING

The responsive mesh back provides a relaxed fit and the synchro-tilt control delivers optimal balance, making Solve an ideal solution for training areas.

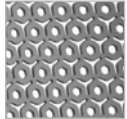


## IDEAS COME IN MANY COLORS

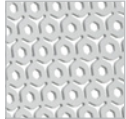
The beauty of Solve is reflected in the design statement it makes for any organization. Choose the streamlined, geometric styling of the ReActiv back for a responsive, firm fit. Add upholstery in a variety of colors to customize your selection to your workplace vision. The ilira-stretch mesh back is a great choice for those looking for a softer, more relaxed feel. Add adjustable arms for upper body support or an optional lumbar support for lower back stability, and custom-build the Solve chair that best suits each user's personal needs.

### ReActiv Back

Combine the fresh look of the innovative ReActiv back design with the classic elegance of Charcoal or Platinum.



Charcoal



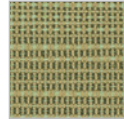
Platinum

### Upholstered ReActiv Back

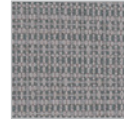
Personalize the look of Solve by combining one of six ReActiv back fabrics with a choice of hundreds of HON seat fabric selections.



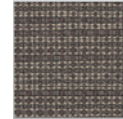
Bittersweet



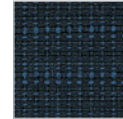
Meadow



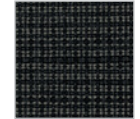
Sterling



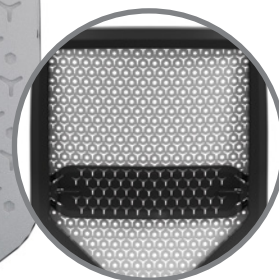
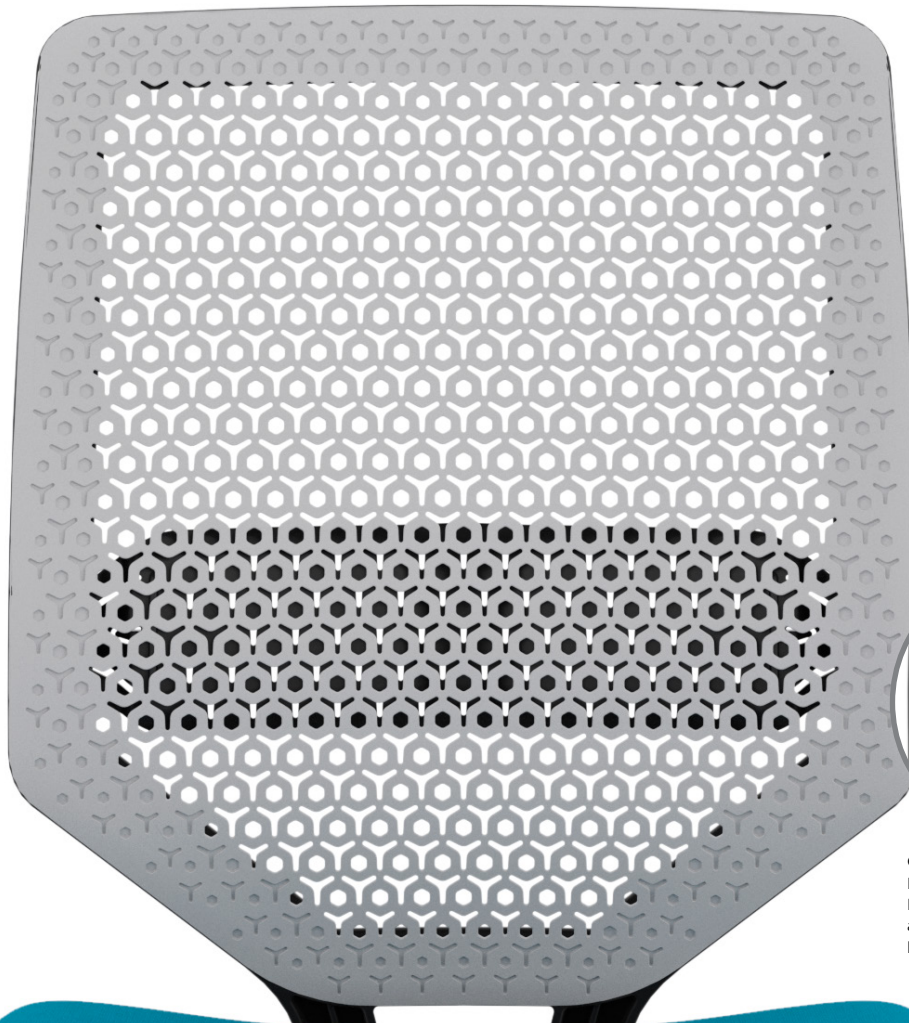
Taupe



Midnight



Ink



### Optional Lumbar Support

Lumbar support can be added to the ReActiv Back, Upholstered ReActiv Back and ilira-stretch mesh back for additional lower back stability.

#### ilira-stretch Mesh Back

The responsive mesh back provides a relaxed fit, while the Black color easily coordinates with virtually any aesthetic.



Black

## STATEMENT OF LINE



ilira-stretch Mesh Back  
Armless



ilira-stretch Mesh Back  
with Arms



ReActiv Back Armless



ReActiv Back with Arms



Upholstered Back Armless



Upholstered Back with Arms



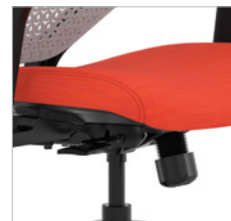
Stool Armless



Stool with Arms

## CONTROL OPTIONS

Solve offers three tilt control options, ranging from the basic swivel-tilt to the more advanced synchro-tilt mechanism that supports a wider range of postures. Additional options include lumbar support and height- and width-adjustable arms.



Synchro-Tilt



Synchro-Tilt With Seat Slide



Advanced Synchro-Tilt



Optional Height- and Width-Adjustable Arms





## INTELLIGENT DESIGN

The Solve chair is smartly appointed to accommodate today's most demanding environments. This single family of chairs offers the flexibility to support an entire space, and the durability to last for years to come. Backed by the HON Full Lifetime Warranty, Solve answers the need for a seating solution that is more reliable, adaptable and comfortable.



### PRODUCTS, MATERIALS, AND FINISHES SHOWN:

**Front:** Solve task chair with Platinum ReActiv back and Centurion Poppy seat upholstery. Voi workstation in Brilliant White with Voi credenza in Harvest and Brilliant White laminate with Maharam Across Schooner seat cushion.

**Pages 2-3 A:** Solve task chair with Black ilira-stretch mesh back and Infinity Hyacinth seat upholstery. Solve task stool with Compass Bittersweet upholstery. Solve task chair with Platinum ReActiv back with lumbar support and Cover Cloth Cyan seat upholstery.

**Pages 4-5 B:** Solve task chair with Compass Sterling upholstered back and Silvertex Lagoon seat upholstery. Voi worksurface and overhead storage in Brilliant White laminate with Platinum Metallic O-Legs. Contain credenza in Brilliant White laminate with Free Evening seat cushion. Flock round lounge chair in Solace Pear. Flock floor lamp and collaborative cylinder table in Brilliant White laminate with tapered square legs in Textured Satin Chrome.

**Page 5 C:** Solve task chair with Charcoal ReActiv back and Compass Bittersweet back upholstery and Millenium Clean seat upholstery. Preside round table top in Brilliant White laminate with Platinum Metallic T-leg base. Contain credenza in Brilliant White laminate with Compass Bittersweet credenza cushion.

**Page 5 D:** Solve task chair with Black ilira-stretch mesh back and Pick 07 seat upholstery. Motivate nesting tables in Brilliant White laminate with Platinum Metallic bases.

**Back:** Solve stools with Platinum ReActiv back and Messenger Lumine seat upholstery. Preside standing-height rectangle table top in Columbian Walnut laminate with White laminate cube base.



Nils Köhn & Wolfgang Deisig  
*Deisig Design - Designers of Solve*



**HON.**®  
The HON Company  
200 Oak Street  
Muscatine, IA 52761  
800.833.3964  
[hon.com](http://hon.com)

© 2015 The HON Company. Form No. H4654 (9/15)  
HON is a registered trademarks of HNI Technologies, under license to The HON Company. Solve and ReActiv are trademarks of The HON Company. ilira-stretch is a registered trademark of H.R. Rathgeber GmbH & Co. KG Indoor. Models, upholstery, and finishes are subject to change without notice.

For more information, visit [hon.com/solve](http://hon.com/solve)