



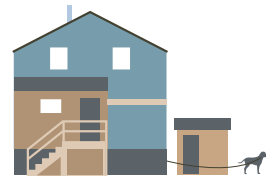
COMPARISON OF HOUSING FORMS AND LAND REQUIREMENTS

SINGLE



Height	1 Storey
Occupants	4 to 6 +/-
Land (m ²)	600 to 900
Land per Unit (m ²)	600 to 900

SINGLE or DUPLEX



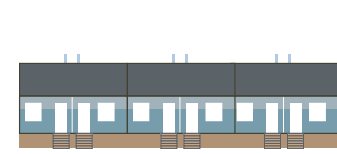
Height	2 Storey
Occupants	4 to 8 +/-
Land (m ²)	800 to 900
Land per Unit (m ²)	400 to 900

DUPLEX



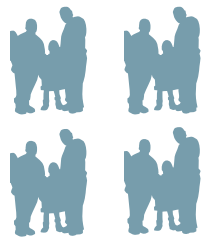
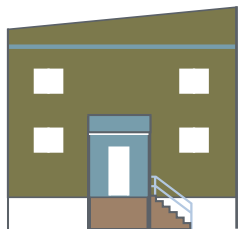
Height	1 Storey
Occupants	6 to 8 +/-
Land (m ²)	800 to 1000
Land per Unit (m ²)	400 to 500

5-ROW



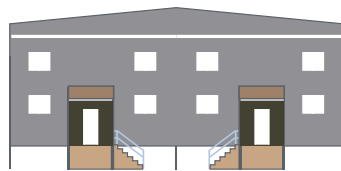
Height	1 Storey
Occupants	15 to 20 +/-
Land (m ²)	1,500 to 2,000
Land per Unit (m ²)	300 to 400

4-PLEX (2 x 2)



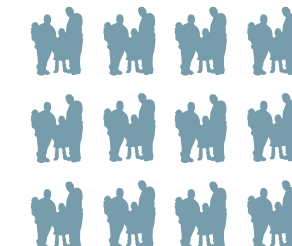
Height	2 Storey
Occupants	12 to 16 +/-
Land (m ²)	800 to 1,200
Land per Unit (m ²)	200 to 300

8-PLEX (2 x 4)



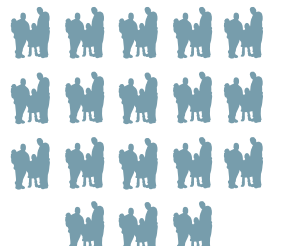
Height	2 Storey
Occupants	24 to 32 +/-
Land (m ²)	1,400 to 2,000
Land per Unit (m ²)	175 to 250

12-PLEX (2 x 6)



Height	2 Storey
Occupants	36 to 48 +/-
Land (m ²)	2,100 to 3,000
Land per Unit (m ²)	175 to 250

18-PLEX (3 x 6)



Height	3 Storey
Occupants	54 to 72 +/-
Land (m ²)	3,150 to 4,500
Land per Unit (m ²)	175 to 250

1. Housing forms shown for illustration purposes. Actual housing designs will vary and may require more land area.
2. "Land per unit" is an estimate of surveyed lot area required, assuming most of the lot is useable. Area will vary with zoning, design, and functional priorities.
3. Occupant count is based on a design standard of 2 persons per bedroom. Many dwelling units in Nunavut have higher occupancy counts.

