

macphail ecological woods forestry project

NURSERY CATALOGUE 2023

Specializing in native trees, shrubs, ferns and wildflowers.

Sales from our nursery help support
our restoration and education efforts across P.E.I.

MACPHAIL WOODS ECOLOGICAL FORESTRY PROJECT

WHO WE ARE

The Macphail Woods Ecological Forestry Project is the initiative of the **Environmental Coalition of Prince Edward Island**, a community-based **registered charity**. It combines protection of the natural areas with **wildlife enhancement, forest stewardship, watershed protection, environmental education and ecological research**.

PROJECT MANAGER

Gary Schneider

macphailwoods@gmail.com

(902) 651-2575

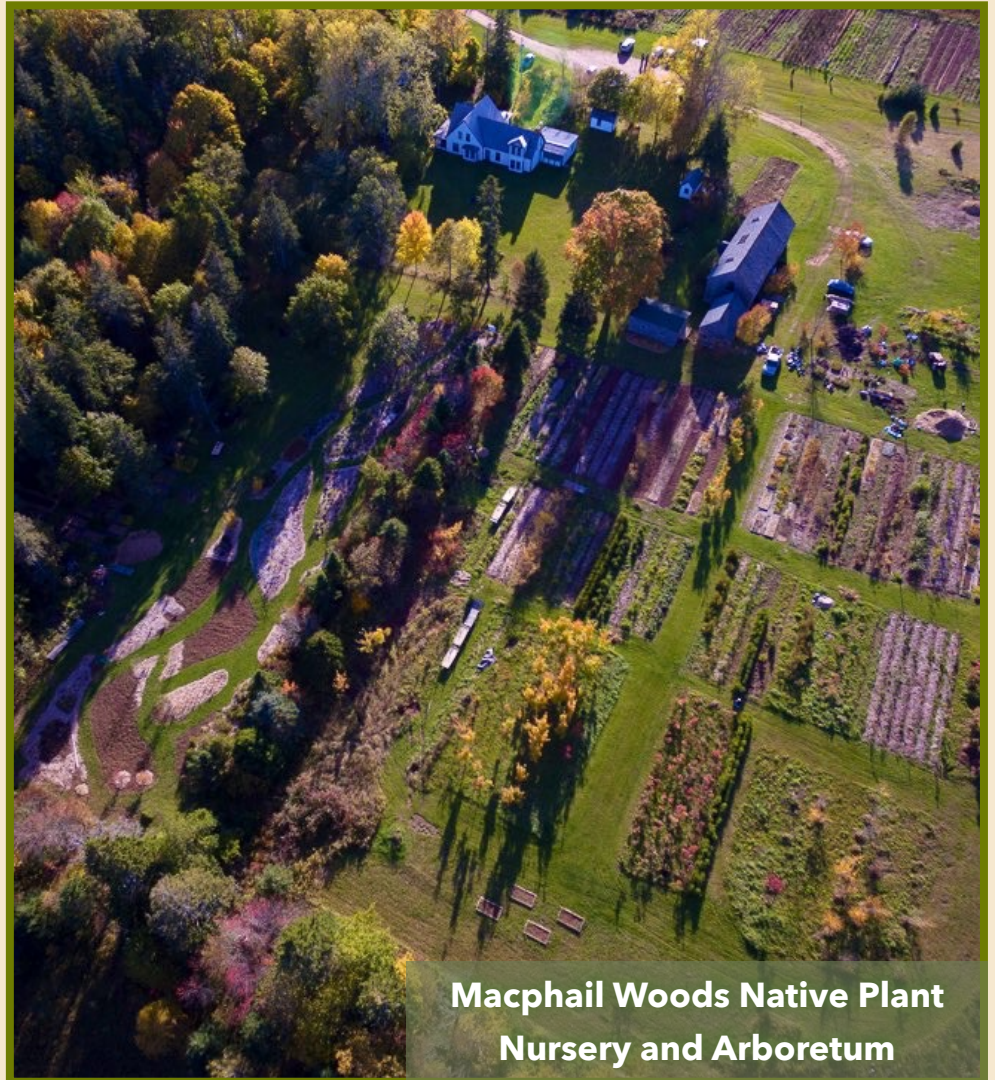
WHAT WE DO

RESTORATION

- Native Plant Landscaping
- Ecological Land Management
- Native Plant Propagation
- Sustainable Forestry
- Shoreline Restoration

EDUCATION

- Summer Nature Camps
- Free Events and Workshops
- School of Woodland Ecology
- Chainsaw Training
- Schoolground Naturalization
- Post-Secondary Courses



**Macphail Woods Native Plant
Nursery and Arboretum**

HOW YOU CAN HELP

Macphail Woods is a unique charitable non-profit. If you have enjoyed our owl prowls or plant walks, if your children have been inspired by our summer programs or school plantings, or if you just want to help us steward the public forest land, please consider making a donation.

DONATE ONLINE

MACPHAIL WOODS NATIVE PLANT NURSERY

2023 SEASON

April 28th - June 4th

Thursdays through Saturdays - 8am to 4pm (or by appointment)

Our stock is most often propagated from native seeds & cuttings and grown on-site. We offer planting ideas and solutions for everyone, from woodlot owners wanting to restore native forests to urban homeowners interested in attracting wildlife. We are continually expanding our collection of native plants, exploring Prince Edward Island looking for rare and interesting species.

NURSERY MANAGER

Becky Byrne

EMAIL:

beckybyrne@macphailwoods.org

PHONE:

(902) 651-2575

WEBSITE:

macphailwoods.org

HOW TO ORDER

Orders can be sent to
Becky Byrne, our nursery
manager by email, post, or
phone.

MAILING

ADDRESS

Macphail Woods
81 Prince St.
Charlottetown, PE
C1A 4R3



Swamp Milkweed growing in our nursery

WHERE TO FIND US

269 Macphail Park Rd, Orwell, PE

Located on the historic Sir Andrew Macphail Homestead.
Come visit our hiking trails, native plant arboretum, nature
centre, nursery, and more!



SERVICES FOR HIRE

NATIVE PLANT LANDSCAPING

Well adapted to our climate and conditions, native species are great for landscaping in every kind of Island habitat, whether around town, in a hedge, along the coast, or in sheltered woodlands.

Macphail Woods has been landscaping with native plants across PEI for over 20 years.



LANDSCAPING SERVICES INCLUDE:

DESIGNING:

hedgerows, pollinator gardens, coastal buffers and blissful backyards

PLANTING:

trees and shrubs of all sizes, wildflowers beds and fern gardens

PRUNING:

for long-term tree health, fruit production and storm damage recovery

ECOLOGICAL LAND MANAGEMENT

Macphail Woods helps steward thousands of acres of forest, marsh and field across PEI with the goal of creating diverse ecosystems that will meet the needs of both humans and wildlife.

We love to help landowners restore their woodlots while creating opportunities for sustainable harvesting and recreational use.



Whether its a guided walk in your woods, a comprehensive management plan or harvesting firewood for the winter, we can help.

FORESTRY SERVICES:

Restoration forestry work

Biodiversity plantings

Pruning and maintenance

Chainsaw training and forest management courses

Hiking trails

Ecological management plans

SHARING A LOVE OF NATURE SUMMER CAMPS



Since 1992, our **Sharing a Love of Nature Summer Camps** have been helping Island youth from **ages 6-16** reconnect with the outdoors. Through **hikes, games, art** and hands-on skills, campers spend most of their time in the woods and fields surrounding our Nature Centre.

At age 12, campers can begin our **Bushcraft Ecology** program which teaches camping skills such as safe knife-use, fire starting, shelter building as well as an **overnight camp-out**.

SCHOOL OF WOODLAND ECOLOGY

Our School of Woodland Ecology offers in-depth courses on a variety of topics including native botany, woodlot management and chainsaw safety.

The School of Woodland Ecology allows participants to delve deeper into specific topics, developing knowledge, skills and confidence.



COURSE TOPICS

- PLANT IDENTIFICATION
- WOODLAND ECOLOGY
- BACKYARD BOTANY
- FOREST RESTORATION
- SUSTAINABLE FUELWOOD HARVESTING
- IMPROVING WILDLIFE HABITAT
- INTRODUCTION TO MAPPING AND DATA COLLECTION

NATIVE TREES

TREE PRICING:

1 FT	2 FT	3 FT	4 FT	5 FT	6 FT	7 FT	8 FT	9 FT	10 FT	11 FT	12 FT
\$22	\$38	\$54	\$70	\$94	\$118	\$142	\$166	\$214	\$262	\$310	\$358

CONIFEROUS TREES



WHITE SPRUCE (*Picea glauca*)

A common and hardy native species. Useful for hedgerows, windbreaks, and seaside plantings.

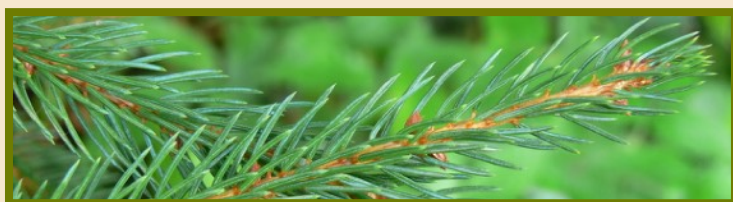
1 - 3 FT



WHITE PINE (*Pinus strobus*)

Our stately forest pine, tolerant of dappled shade and one of our tallest-growing native trees.

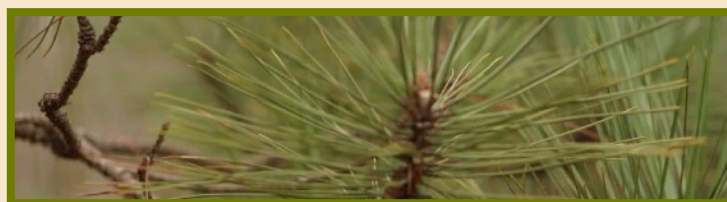
1 - 2 FT



RED SPRUCE (*Picea rubens*)

A late-successional conifer which prefers sheltered forested sites and will tolerate shade.

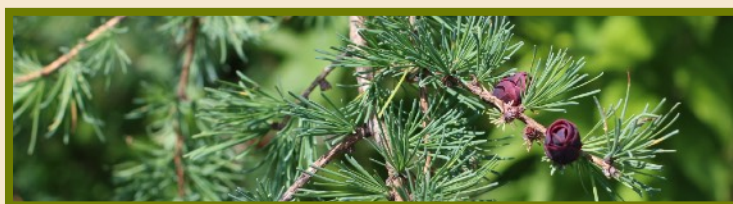
1 FT



RED PINE (*Pinus resinosa*)

A handsome pine of sandy soils, it does not tolerate very much shade but does well on dry sites.

2 - 3 FT



EASTERN LARCH (*Larix laricina*)

A sun-loving tree which sheds its needles in late fall. Adapted to wind and wet while being resistant to rot.

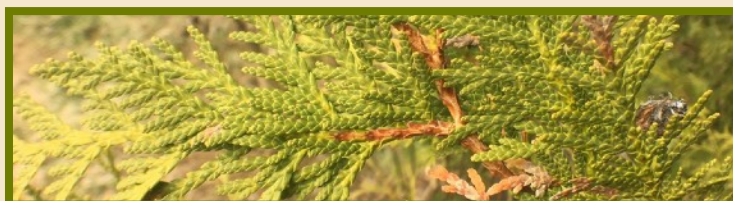
1 - 2 FT



EASTERN HEMLOCK (*Tsuga canadensis*)

One of our longest-living tree species. It is a key component of our native Wabanaki-Acadian forest.

1 - 2 FT



EASTERN WHITE CEDAR (*Thuja occidentalis*)

A sun-loving beautiful tree with scale-like foliage. Great for wet or swampy areas but does not tolerate wind.

1-2 FT

NATIVE TREES

TREE PRICING:

1 FT	2 FT	3 FT	4 FT	5 FT	6 FT	7 FT	8 FT	9 FT	10 FT	11 FT	12 FT
\$22	\$38	\$54	\$70	\$94	\$118	\$142	\$166	\$214	\$262	\$310	\$358

DECIDUOUS TREES



RED MAPLE (*Acer rubrum*)

One of our more versatile native maples, tolerating sun, light shade, wind, salt, and even boggy ground.

1 - 3 FT



WHITE BIRCH (*Betula papyrifera*)

White birch is an early successional tree, growing on dry, exposed sites.

1 - 8 FT



STRIPED MAPLE (*Acer pennsylvanicum*)

A beautiful understory tree. It grows well in sheltered spots with dappled light.

1 - 3 FT



IRONWOOD (*Ostrya virginiana*)

An understory tree of dappled light and riversides, this species is very rare on PEI.

1 FT



SUGAR MAPLE (*Acer saccharum*)

A stately forest tree. Does well in sheltered habitats, great for woodland plantings.

1 - 6 FT



AMERICAN ELM (*Ulmus americanus*)

A water-tolerant species more commonly found in western PEI. Often used as an ornamental tree in urban areas.

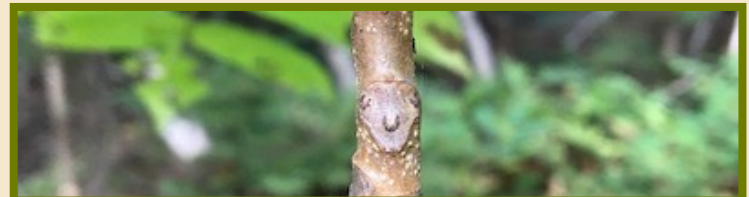
1 - 7 FT



YELLOW BIRCH (*Betula alleghaniensis*)

A key component of our forest, this species loves rich, moist forest soils.

1 - 3 FT



BUTTERNUT (*Juglans cinerea*)

Native to the region, this species prefers moist, rich soils with light shading. Often used as an ornamental.

1 FT

NATIVE TREES

TREE PRICING:

1 FT	2 FT	3 FT	4 FT	5 FT	6 FT	7 FT	8 FT	9 FT	10 FT	11 FT	12 FT
\$22	\$38	\$54	\$70	\$94	\$118	\$142	\$166	\$214	\$262	\$310	\$358

DECIDUOUS TREES



NORTHERN RED OAK (*Quercus rubs*)

Our beautiful provincial tree. A deep-rooted species with lovely fall foliage and great for wildlife.

1 - 8 FT



WHITE ASH (*Fraxinus Americans*)

This species grows well in light shade and has beautiful fall colours.

1 FT

FREE SPRING NURSERY WORKSHOPS

OWL PROWLs

April 15th & 22nd - 7:30pm

BIRDS & BREAKFAST

Saturday, May 20th - 7am

LANDSCAPING WITH NATIVE PLANTS

Saturday, April 29th - 10am

AFTER THE STORM - HURRICANE FIONA

Saturday, May 27th - 10am

HEDGEROWS & WINDBREAKS

Saturday, May 6th - 10am

PLANTS OF PEI WITH KATE

MACQUARRIE

Saturday, June 3rd - 10am

PRUNING TREES & SHRUBS

Saturday, May 13th - 10am

A 50 YEAR PERSPECTIVE: NATURE & THE MARITIMES WITH BOB BANCROFT

Saturday, June 3rd - 10am

NATIVE SHRUBS



At Macphail Woods, we use a combination of trees and shrubs in all our plantings. In addition to enhancing biodiversity, shrubs also provide food sources and habitat for birds and other animals. Many native shrubs are hardy, tolerant of high winds and salt spray, and work well in hedgerows or along the shoreline.

SHRUB PRICING:

1 FT	2 FT	3 FT	4 FT	5 FT	6 FT
\$22	\$34	\$46	\$58	\$70	\$82



MOUNTAIN MAPLE

(*Acer spicatum*)

Our fourth native maple grows along shaded riverways.

2 FT



GREY BIRCH

(*Betula populifolia*)

A common but hardy short-growing tree. Excellent for hedgerows.

4 - 6 FT



BEAKED HAZELNUT

(*Corylus cornuta*)

A versatile understory shrub which produces edible hazelnuts.

1 FT



WITCH HAZEL

(*Hamamelis virginiana*)

A very rare native forest shrub with beautiful fall flowers.

2 - 5 FT



HAWTHORN

(*Crataegus spp*)

A sun-loving and thorny shrub of hedgerows and forest edges. Excellent for birds.

1 - 3 FT



BAYBERRY

(*Myrica pensylvanica*)

A common and hardy low-growing shrub. Great for windy or sandy sites.

1 FT

NATIVE SHRUBS



RED-OSIER DOGWOOD

(*Cornus stolonifera*)

A low-growing shrub with showy red bark. Great for landscaping.

1 - 4 FT



WILLOW

(*Salix* spp.)

A versatile shrub with early flowers for pollinators. Fast growing and tolerant of a variety of conditions.

2 FT



COMMON ELDER

(*Sambuchus nigra*)

Tolerant of sun and water, this showy shrub also produces edible dark purple berries, great for wildlife.

1 - 3 FT



ALTERNATE-LEAF DOGWOOD

(*Cornus alternifolia*)

A tall woodland shrub with attractive white flowers and blue berries.

1 - 3 FT



WILD ROSE

(*Rosa virginiana*)

A hardy shrub for improving wildlife habitat with beautiful pink flowers.

1 - 3 FT



STAGHORN SUMAC

(*Rhus typhina*)

A very hardy shrub which will spread through root suckers. Showy flowers and foliage. Great for wildlife

1 - 3 FT



ROUND-LEAF DOGWOOD

(*Cornus rugosa*)

A water-tolerant species often found on the edge between marsh and forest.

1 - 3 FT



CHOKEBERRY

(*Aronia* spp.)

A vigorous native shrub that thrives in sunny conditions. Provides fruit for wildlife.

1 - 4 FT



WINTERBERRY HOLLY

(*Ilex verticillata*)

A hardy and versatile shrub with beautiful orange winter berries. A great plant for wildlife.

1 - 2 FT



BUSH HONEYSUCKLE

(*Diervilla lonicera*)

A low-growing shrub with yellow blooms in summer

1 - 2 FT



AMERICAN FLY HONEYSUCKLE

(*Lonicera canadensis*)

A important forest shrub for nectar-loving species such as hummingbirds.

1 - 2 FT



CHOCKECHERRY

(*Prunus virginiana*)

This spreading shrub is excellent shrub for hedges and wildlife

1 - 3 FT

NATIVE WILDFLOWERS



Small Purple Fringed Orchid

WILDFLOWER PRICING

SMALL \$18

MEDIUM \$28

LARGE \$38



AMERICAN GROUNDNUT
(*Apios americana*)

This very rare perennial vine is one of our only native legumes.



JACK IN THE PULPIT
(*Arisaema triphyllum*)

A rare native wildflower, great for open, sunny and swampy conditions.



BLUE VERVAIN
(*Verbena hastata*)

A rare water-tolerant wildflower of marsh-edges, meadows and shores.



SWAMP MILKWEED
(*Asclepias incarnata*)

Our beautiful native milkweed is a favourite food for monarch butterflies as well as many pollinators.



**SMALL
ENCHANTER'S NIGHTSHADE**
(*Circaea alpina*)

A low-growing wildflower of moist and shady woodlands.



JOE-PYE WEED
(*Eupatorium maculatum*)

Often found in wetlands, this tall growing perennial thrives in full sun and boasts showy pink flowers.



CANADA ANEMONE
(*Anemone canadensis*)

Part of the buttercup family, this perennial native wildflower loves sunny moist soils and boasts beautiful white flowers. A very rare Island plant.



**BROAD-LEAVED
ENCHANTER'S NIGHTSHADE**
(*Circaea lutetiana*)

A woodland wildflower often found in shaded floodplains and riverbanks.



BONESET

(*Eupatorium perfoliatum*)
A showy species with white flowers that prefers wetter soils and full sun.

NATIVE WILDFLOWERS



NODDING TRILLIUM

(*Trillium cernuum*)

A woodland plant with a showy, drooping flowers.



TALL CORD GRASS

(*Spartina* spp.)

A tall-growing grass which tolerates both fresh water and salt water.



BLUE-EYED GRASS

(*Sisyrinchium montanum*)

A small but gorgeous blue flower with iris-like leaves.



HERB ROBERT

(*Geranium robertianum*)

Another light shade plant which will spread, blanketing the woodland floor.



BANEBSERIES

(*Actaea* spp.)

A distinctive forest flower, great food for birds but poisonous to mammals.



YELLOW VIOLET

(*Viola pubescens*)

A rare woodland plant with beautiful yellow flowers.



HAIRY SWEET CICELY

(*Osmorhiza claytonii*)

A rare woodland wildflower that thrives in dappled shade in rich, moist soils.



BLUE FLAG IRIS

(*Iris versicolor*)

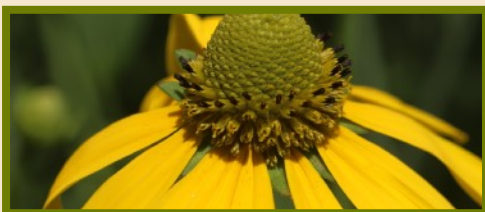
A full-sun beauty which does best in wet areas. Great for native pollinators.



SEASIDE GOLDENROD

(*Solidago sempervirens*)

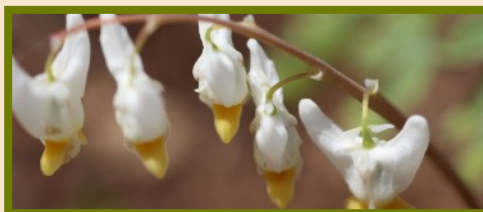
A showy seaside goldenrod. Well-adapted to salt, sand and sun.



YELLOW CONEFLOWER

(*Rudbeckia laciniata*)

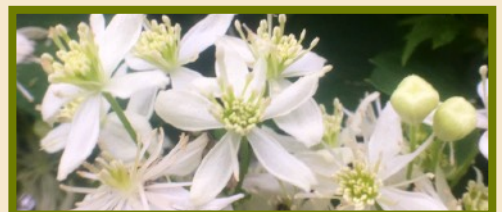
Loves full sun but needs some shelter from wind. A great plant for pollinators and birds.



DUTCHMAN'S BREECHES

(*Dicentra cucullaria*)

An ephemeral springtime plant with unique flowers. Grows best in moist, shaded woodlands



CLEMATIS

(*Clematis virginiana*)

One of our few native vines, this plant is a great addition to any yard. It has showy white flowers and does well in sunny, wet areas.

NATIVE FERNS

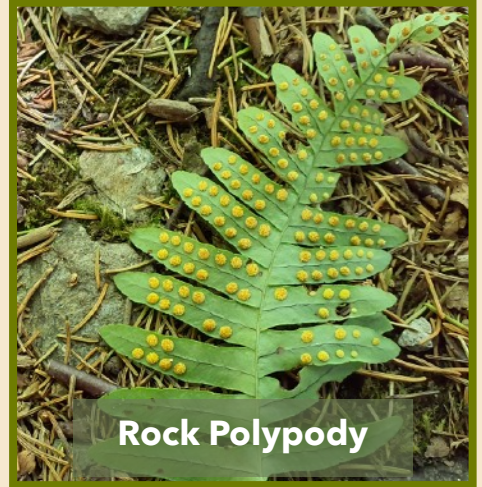
Prince Edward Island is home to many types of ferns such as the edible ostrich fern, the rare almost evergreen Christmas fern and the hardy sensitive fern. These plants are beautiful additions to a yard and incredibly valuable species for forest restoration and provide ground cover and habitat for many of our native animals.

FERN PRICING

SMALL \$18

MEDIUM \$28

LARGE \$38



Rock Polypody



SENSITIVE FERN

(*Onoclea sensibilis*)

These sun-loving ferns are very adaptable but thrive in wet areas.



CRESTED WOOD FERN

(*Dryopteris cristata*)

This rare fern does well in moist environments.



LADY FERN

(*Athyrium filix-femina*)

An elegant fern that tolerates wet soils and a variety of light conditions.



OSTRICH FERN

(*Matteuccia struthiopteris*)

A tall, hardy, and spreading fern which produces our edible "fiddlehead".



MALE FERN

(*Dryopteris filix-mas*)

This very rare native fern does best under dappled light.



WOOD FERNS

(*Dryopteris spp.*)

Although there are several species of wood fern, they all thrive in forest-like habitats.



CHRISTMAS FERN

(*Polystichum acrostichoides*)

A rare low-growing fern which stays green for most of the winter.



CINNAMON FERN

(*Osmundastrum cinnamomeum*)

This showy fern is an excellent choice for either woodlands or around the home.



INTERRUPTED FERN

(*Osmunda claytoniana*)

Prefers shaded woodlands with rich soil but is often used in urban landscaping.

PRUNING EQUIPMENT

Pruning is a vital activity in improving the look and health of your trees and shrubs but having the right tools makes it all the easier. Silky pruning saws are our favourite and come in a variety of sizes from small hand-saws to long pole-saws.

We also offer workshops throughout the year to teach proper pruning techniques.

All profits from our equipment sales help to fund our many non-profit activities from school ground naturalization plantings to public land restoration to environmental education.

Call us or email to ask about which saw might be right for you

- Hands Pruners
- Folding Saws
- Fixed Saws
- Pole Pruners
- Replacement Blades
- Holsters



WOOD PRESERVATIVE



Friendly to plants, animals, and people, LifeTime® can be used in direct contact with garden soil without any toxic effect. By using this economical and environment-friendly wood stain product, you make a positive statement about protecting your environment.

LG - 4.5 Litre - \$ 100.00

SM - 1 Litre - \$ 22.00

