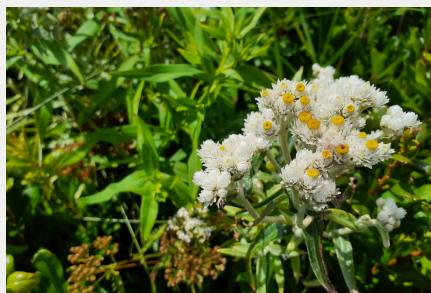


# SCHOOL OF WOODLAND ECOLOGY

EASILY ACCESSIBLE ECOLOGICAL KNOWLEDGE.

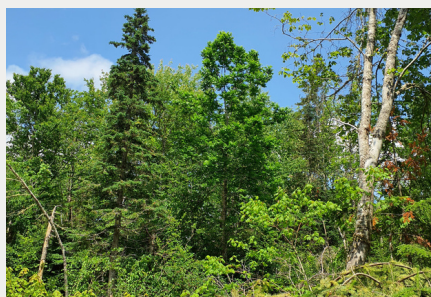


Over the last 30 years, Macphail Woods has offered a huge variety of workshops focused on ecological concepts, woodlot management and building forestry skills. The more that we understand nature the more we can appreciate it, and the more sound our restorative actions.



## NATIVE BOTANY

- **I - Native Trees** May 4th - 9 am-12:30 pm
- **II - Shrubs** May 4th - 12:30 pm-3 pm
- **III - Wildflowers & Ferns** May 18th -9 am-12:30 pm
- **IV - Mosses, Lichens & More** May 18th -12:30 pm-3 pm



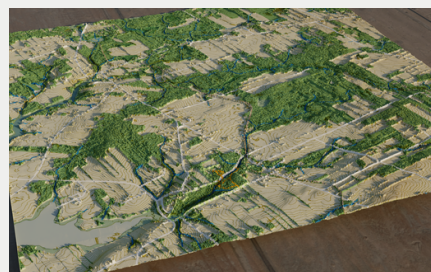
## RESTORATION TECHNIQUES

- **I - Pruning & Tree Health** Jun 2nd -9 am-12:30 pm
- **II - Native Plantings & Biodiversity** June 2nd - 12:30 pm-3 pm
- **III - Invasive Species Management** June 13th - 9 am-12:30 pm



## ISLAND ECOLOGY

- **I Intro to Island Ecology** July 6th - 9 am-3 pm
- **II Assessing Habitat Health** July 27th - 9 am -3 pm
- **III Ecological Issues and Treatments** November 2nd - 9 am-3 pm
- **IV Coasts, Wetlands & Rivers** August 24th - 9 am-3 pm



## MAPPING YOUR LAND

- **I - Beginner's GIS Mapping** January 18th - 9 am-12:30 pm
- **II - Intermediate GIS Mapping** October 19th - 9 am-3 pm



## OUTDOOR RECREATION

- **I - Trail Making:** August 17th - 9 am- 12:30 pm



### Contact

Daniel MacRae at [danielmacrae@macphailwoods.org](mailto:danielmacrae@macphailwoods.org)  
269 Macphail Park rd, Orwell PEI

macphail  
ecological woods  
forestry project

# Native Botany

---



## I - Native Trees

Half Day  
Tuition: \$60

This course focuses on providing outdoor hands-on experience looking at leaves, buds, branches, bark, and the basic patterns of native tree identification. Our diverse array of native tree species are critical components of all Island habitats, whether established in the canopy or growing in the understory.

May 4th, 2024 - 9 am-12:30 pm

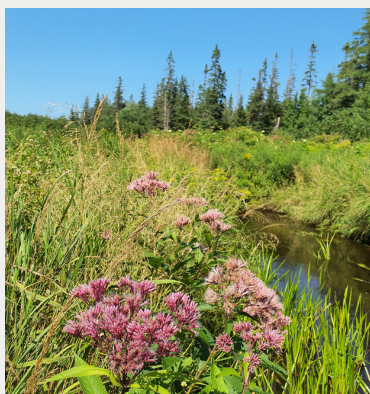


## II - Shrubs

Half Day  
Tuition: \$60

Shrubs provide habitat and food for wildlife as well as a staggering number of ecological benefits from nitrogen fixation to shoreline protection. This four-hour course will take us into the Macphail Woods Arboretum to get to know many of the native shrubs that grow across the province and how to use them in restoration efforts.

May 4th, 2024 - 12:30 pm -3 pm



## III - Wildflowers and Ferns

Half Day  
Tuition: \$60

PEI is home to many stunning wildflowers and ferns, from our beaches and wetlands to our forests and fields. These diverse species are critically important to many ecological processes, local wildlife and native pollinators. This course will introduce participants to rare and common wildflowers and ferns from across the Island.

May 18th, 2024 - 9 am- 12:30



## IV - Mosses, Lichens and more

Half Day  
Tuition: \$60

Small species, such as our native mosses, liverworts and lichens, are often mysterious, overlooked and difficult to identify. Despite their small size, they are an essential component of habitat health, fulfilling a number of critical ecological functions. This half-day course will introduce participants to several common and rare small species and the stories that they tell.

May 18th, 2024 -12:30 pm -3 pm



**Location for courses are all held at Macphail Woods!**

Our courses may take place anywhere on our property, but will begin at Macphail Woods Nature Center 269 Macphail Park Road, Vernon Bridge PEI





# Restoration Techniques

---



## I - Pruning & Tree Health

Half Day  
Tuition: \$60

This course will focus on learning hands-on skills that you can take home to your yard or forest to help ensure the vigour and beauty of your trees and shrubs. Over the four-hour course, participants will learn proper pruning techniques to help maintain healthy, attractive, and safe trees, and to add value to trees in your forest.

June 2d, 2024 - 9 am- 12:30 pm



## II - Native Plantings & Biodiversity

Half Day  
Tuition: \$60

Participants in this half-day course will learn about the types of plants that can be found on PEI, from liverworts and mosses to trees and ferns. Using our native plant nursery and arboretum as well as forest trails, we will have hands-on examples that demonstrate how plants grow, how root systems connect, strategies for survival, propagation, and more.

June 2d, 2024 - 12:30 pm -3 pm



## III - Invasive Species Management

Half Day  
Tuition: \$60

Non-native and invasive species can quickly spread and dominate, pushing out native species and disrupting local habitats. This half-day course will introduce participants to some of the most problematic non-natives as well as methods for removal and management.

July 13th, 2024 - 9 am- 12:30 pm

# Outdoor Recreation

---



## I - Trailmaking

Half Day  
Tuition: \$60

Proper access to a woodland can make the difference between an enjoyable outing and a forest that rarely gets visited. This four-hour course will cover the basics of trail design and construction. The first two hours will go over laying out and mapping a trail, including the pitfalls to avoid. The second part will take participants through the hands-on steps of creating a trail. We will also take a look at woodland roads and how to make them so that they provide access but don't degrade your forest.

August 17th, 2024 - 9 am- 12:30 pm



# Mapping your Land

---



## I - Beginner's GIS Mapping

Half Day  
Tuition: \$60

This half-day course will introduce participants to the basic uses and potential benefits of digital habitat mapping. This introduction to digital mapping is perfect for landowners and citizen scientists interested in collecting better data using modern devices!

January 18th, 2025 - 9 am- 12:30 pm



## II - Intermediate GIS Mapping

Full Day  
Tuition: \$120

This full-day course will get participants outside collecting data using a variety of methods, apps and tools as well as introducing the basics of Quantum GIS. Half of the day will be spent in the field studying the surrounding forests and fields while the rest will involve an indoor classroom session learning the uses of GIS mapping through interpreting the collected data.

October 19th, 2024 - 9 am- 12:30 pm

# Island Ecology

---



## I - Intro to Island Ecology

Full Day  
Tuition: \$120

Our Island Ecology course helps landowners gain the knowledge and skills they need to enjoy, improve, and steward their local habitats. This one-day course uses the Macphail Woods as an outdoor learning laboratory to introduce a myriad of important ecological concepts, keystone species and common issues found across our diverse Island habitats!

July 6th, 2024 9 am- 3 pm



## II - Assessing Habitat Health

Full Day  
Tuition: \$120

When stewarding a habitat, being informed about the specific composition of species, soils, water, and light is a must. This day-long course will give participants practical experience assessing a variety of habitat types, focusing on critical clues describing habitat health!

July 27th, 2024 - 9 am- 3 pm





# Island Ecology (continued)



## III - Common Ecological Issues and Treatments

Full Day  
Tuition: \$120

This one-day course will provide participants with a variety of strategies and skills to improve the ecological and economic value of their forest. Restorative ecological treatments are focused on creating ecologically complex, long-lived, high-value habitats. This course will cover a variety of Island habitats, their common issues, as well as a variety of potential treatments. This course is ideal for land owners, conservation workers and foresters!

November 2d, 2024 - 9 am- 3 pm



## IV - Coasts, Wetlands & Rivers

Full Day  
Tuition: \$120

This one-day course will introduce participants to the wonderful array of wetland and coastal habitats that can be found across the Island. These unique areas are often home to many rare and native species and fulfill several incredibly important ecological services. This course includes both hands-on experience and in-class learning, covering common threats to these sensitive habitats as well as offering positive solutions for the future. Anyone with an interest in protecting coastal, wetland, and river habitats will enjoy this course, and gain valuable insight into this critical component of PEI's landscapes.

August 24th, 2024 - 9 am- 3 pm

## Register Today!

To register for any of our School of Woodland Ecology courses, visit [macphailwoods.org/courses/school-of-woodland-ecology](https://macphailwoods.org/courses/school-of-woodland-ecology)



Macphail Woods is a non-profit, charitable initiative of the Environmental Coalition of Prince Edward Island.

## Donate Now!

macphail  
ecological woods  
forestry project

(902) 651-2575

269 Macphail Park Road, Vernon Bridge, PEI