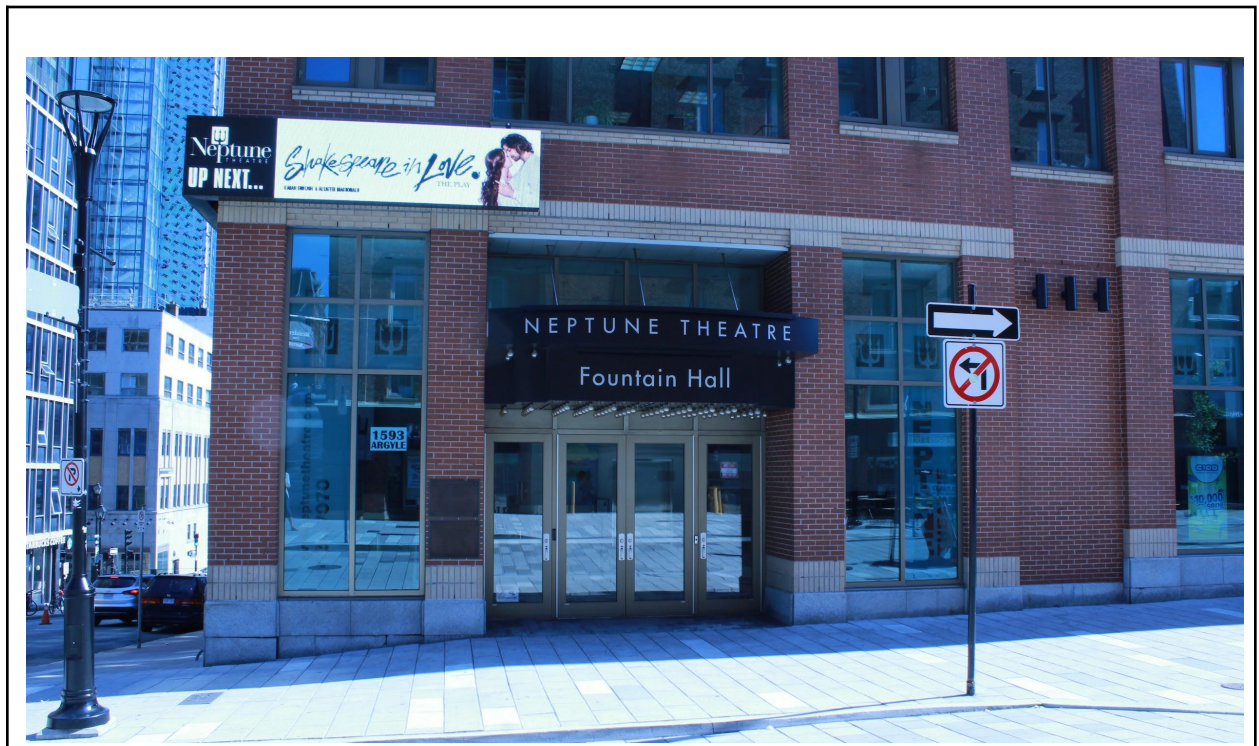


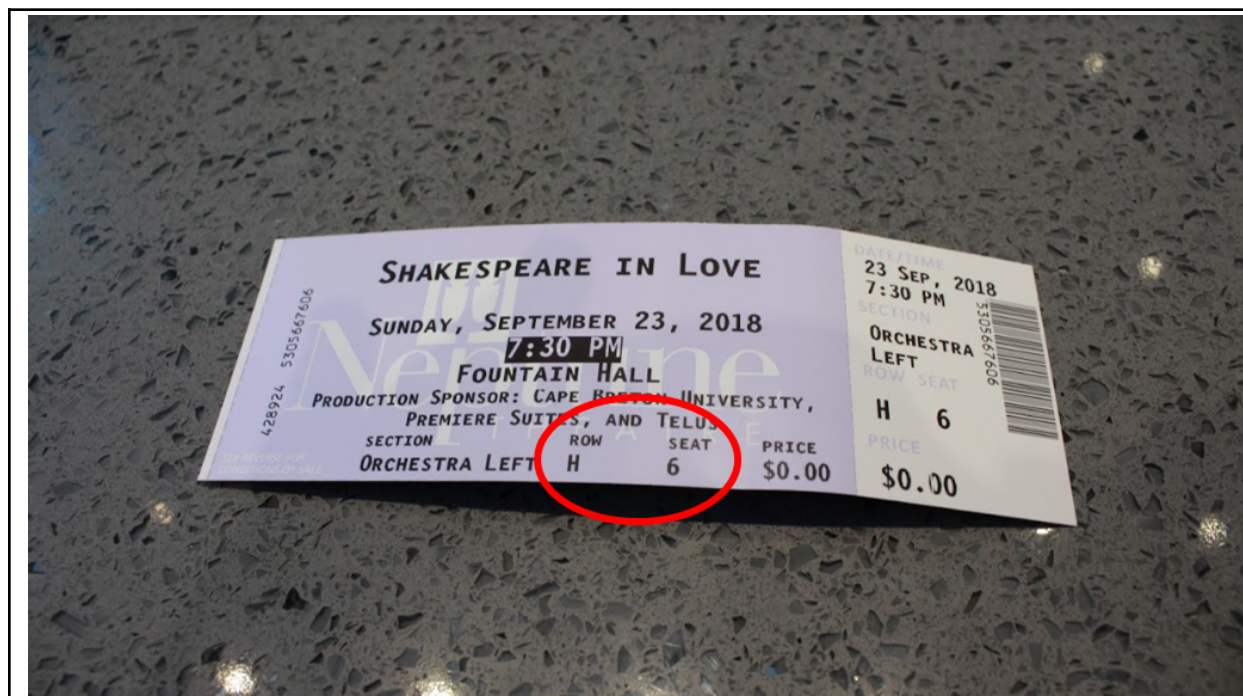
Going to a Show at Neptune Theatre



I am going to see a play at Neptune Theatre. I may walk up the hill or down the hill to get there, and I will go through the glass doors at the front.



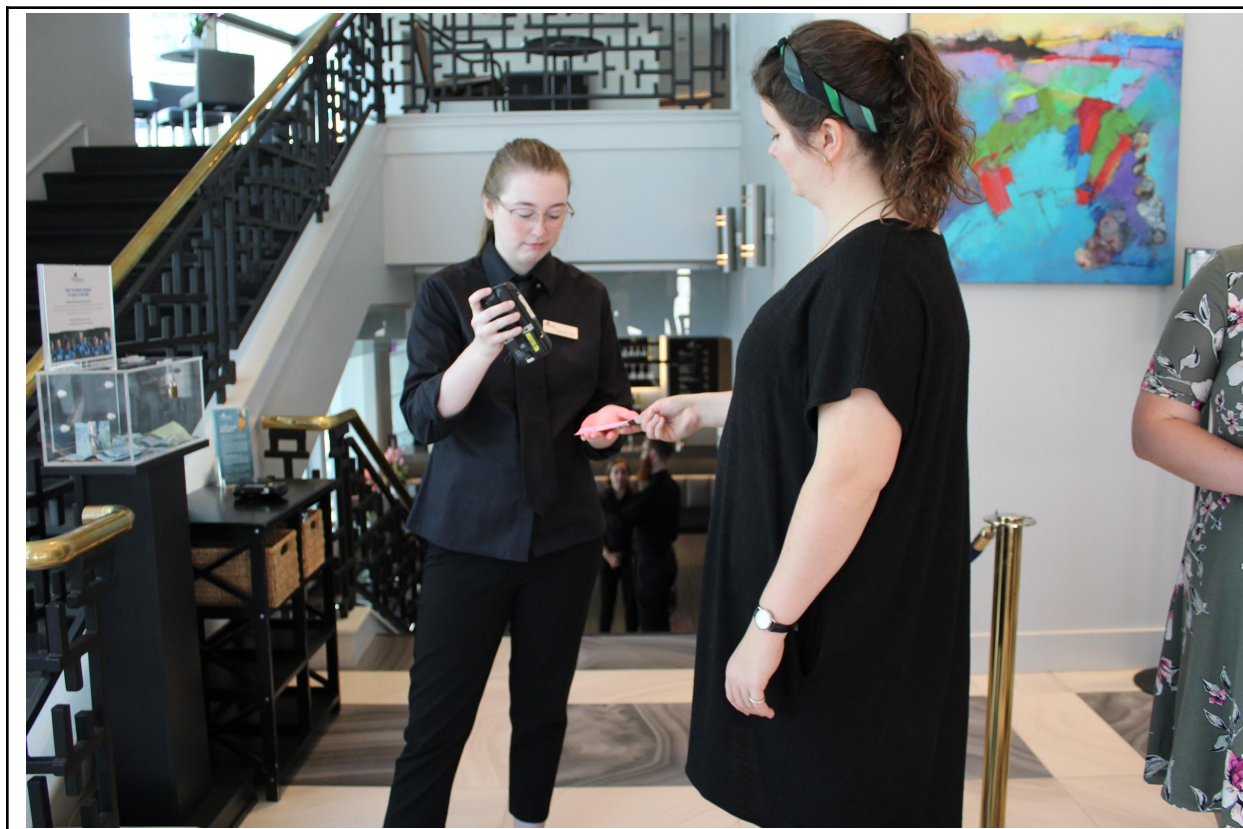
When I get inside, I may have to stand in a line to get my tickets for the play. If I don't want to stand, I can sit on a couch and wait.



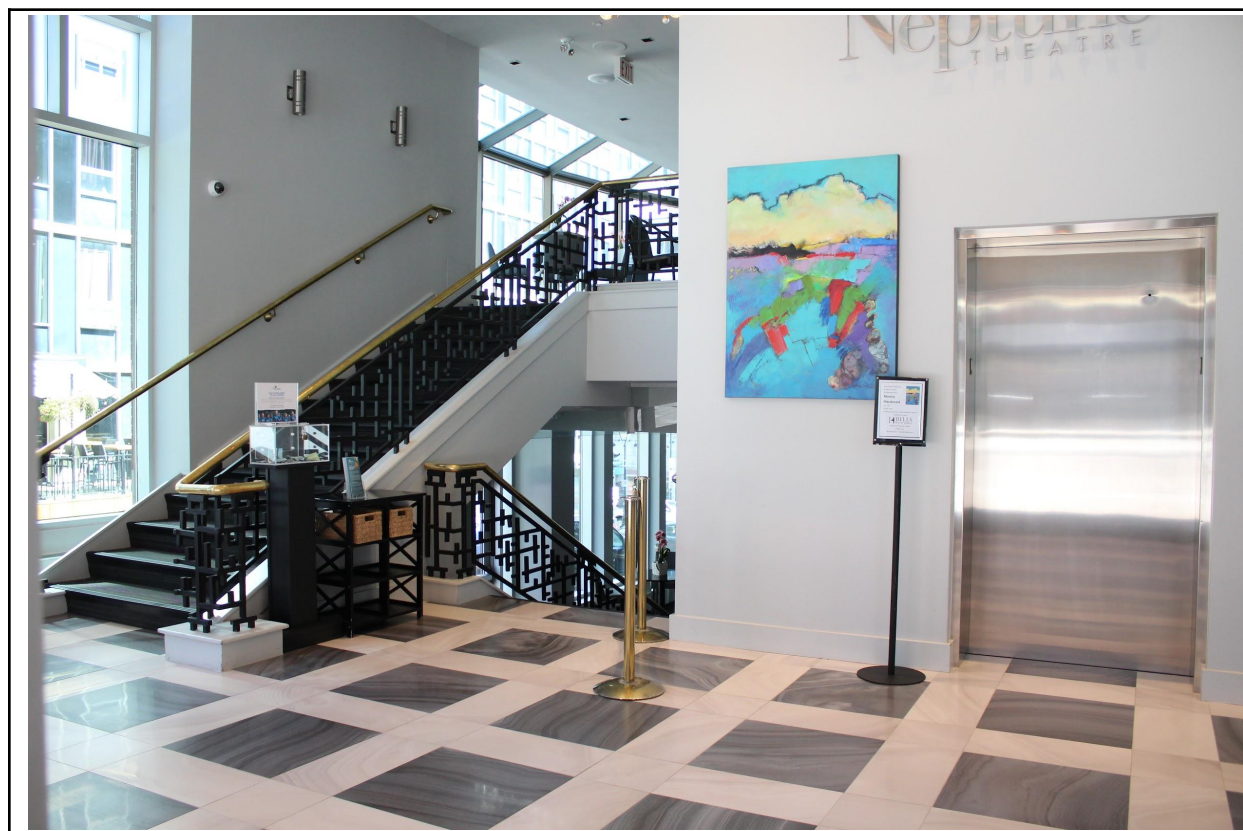
I can look at my ticket to find my seat. My ticket will tell the usher I have paid to see the play. I should keep my ticket safe.



If I am not sure where to go, or need help, I can ask someone in a Neptune shirt with a Neptune name tag. They are very nice and helpful people. They are there to help.



When I'm ready to go into the lobby, a theatre usher will scan my ticket. I will hand my ticket to them and they will use a small machine with a red laser that beeps to read my ticket so they know I have come to see the show. The theatre usher will tell me where to go next.



Depending on where I am sitting, I may have to go upstairs or downstairs. I can take the stairs or the elevator, whichever I prefer.



The lobby upstairs and downstairs is full of chairs and benches so I can sit and rest if I want to. No matter if I'm upstairs or downstairs, I will see a bar in the lobby. At this bar they sell different kinds of juices, water, and drinks. They also sell snacks. I can take my drink and snack into the theatre.



If I need to use the bathroom before the show, I can go to the restrooms that are behind the ticket booth where I got my ticket.

Or I can walk down the stairs all the way to the bottom and go to the bathroom on the bottom level (there's an elevator that goes all the way down too!).

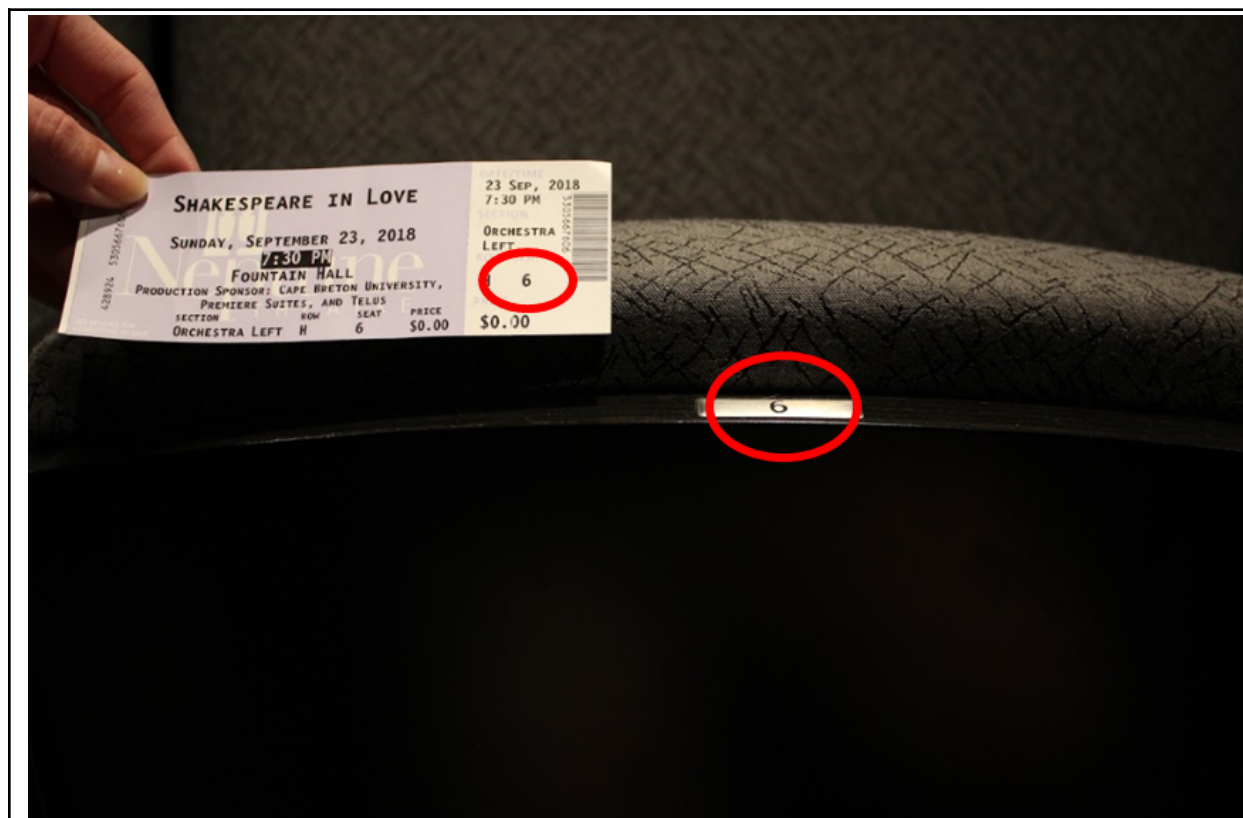
The washrooms by the box office are gender-specific. The washrooms on the bottom level are gender neutral.

After I use the bathroom, I will go back to the lobby to wait.



A bell will ring a few minutes before the play starts. This means it is time to go to my seat. I will walk to the doors of the theatre and the usher will tell me which way to go so I can find my seat inside the theatre. Depending on the performance, they may also hand me a booklet of information on the play I'm about to see.

There will be a final bell sound 1 minute before the play starts. This is to let people know the play is ready to start.



When I get in the theatre, I find my seat with the number on my ticket. My seat folds down.

I keep my feet on the floor and do not kick the seat in front of me. Many people will come into the theatre and find their seats while I wait for the show to begin.



Before the show starts, the lights will dim, but they will stay on for the entire show during a Relaxed Performance. I may hear announcements or music. If the show sounds are too loud, I can use headphones, ear protection, or cover my ears.

If I need to leave during the show, I will walk as quietly as I can out of the theatre.

If I have a question, I can ask it as quietly as I can.

People might clap, snap, or wave their hands at the end of a performance or song, I can clap, snap, or wave my hands too. For Relaxed Performances, we encourage snapping and waving hands instead of clapping.



Some shows have a 15-20 minute break called an “intermission.” If the show I’m attending has an intermission, I can remain sitting in my seat, stand up and stretch, or walk to the lobby or restroom.

Intermission can be a busy, crowded time. I may have to wait in lines to leave the theatre, to enter the restroom, or to get a snack or drink at the bar.

I will hear bells sounding when it’s time to locate my seat in the theatre again. Then the show will continue on stage.

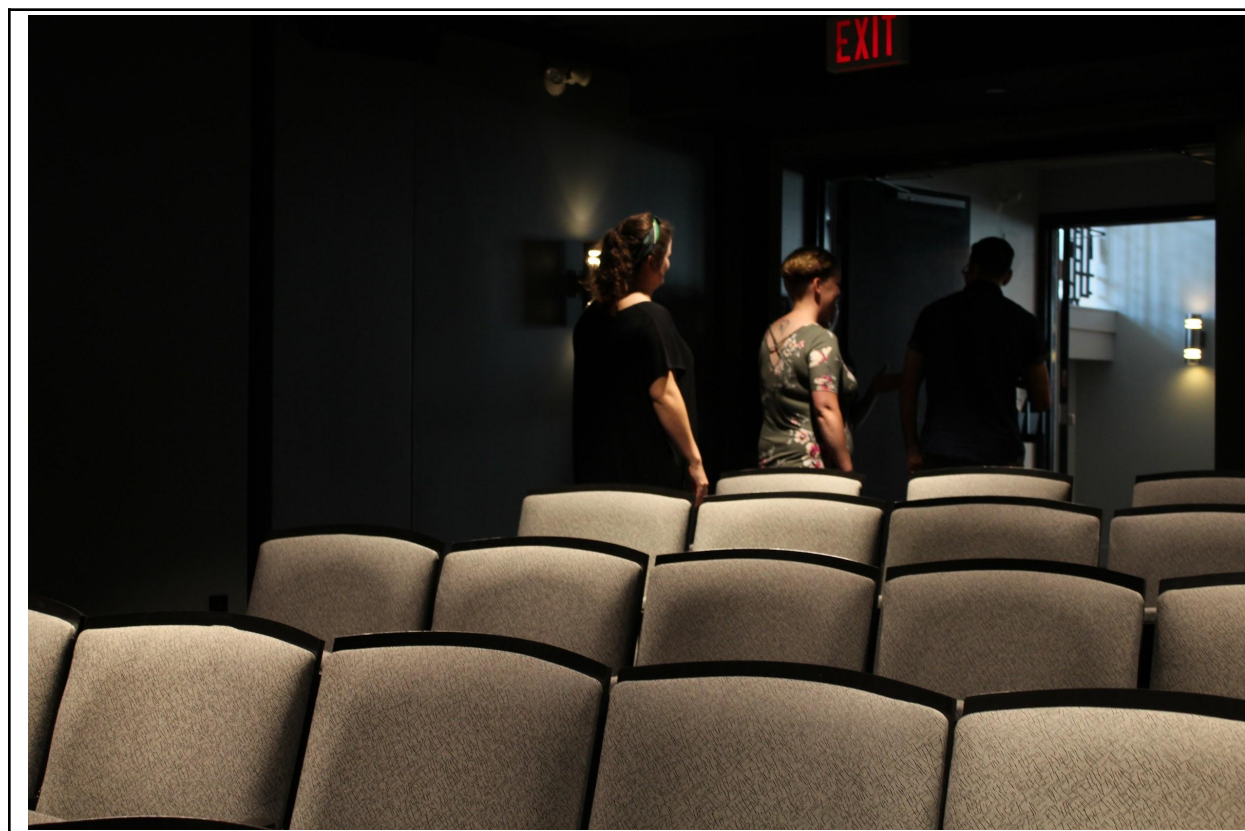


If I need to take a break and it is not intermission, I can go to the Quiet Room or back to the lobby. If I am not sure where the Quiet Room is, an usher will help me locate it. If I need to leave during the show, I will walk as quietly as I can out of the theatre.



When the show is over, I can clap, snap, or wave my hands when the actors come out on stage to take their bows. If the clapping is too loud, I can wear headphones, ear protection, or cover my ears.

Sometimes people stand up at the end of the show to clap or snap very loudly if they really loved the performance. I don't have to stand up if I don't want to, but I can if I really loved the show too.



When the actors leave the stage, I can remain sitting in my seat and wait for the crowd to leave the theatre, or I can wait in line to leave the theatre and go back to the lobby.

I will walk out of Neptune Theatre the same way I came in.

I can talk about the show as soon as the show ends.

Thank you for joining us at Neptune Theatre!

