



Disney's Frozen Neptune Theatre



Saturday, December 7th at 2:00 PM
Actors, Characters, and Information Guide



This performance is not exactly like the movie version of Frozen.
It is Neptune Theatre's production of Disney's Frozen.

There will be lots of new songs and changes to the characters you might be used to.

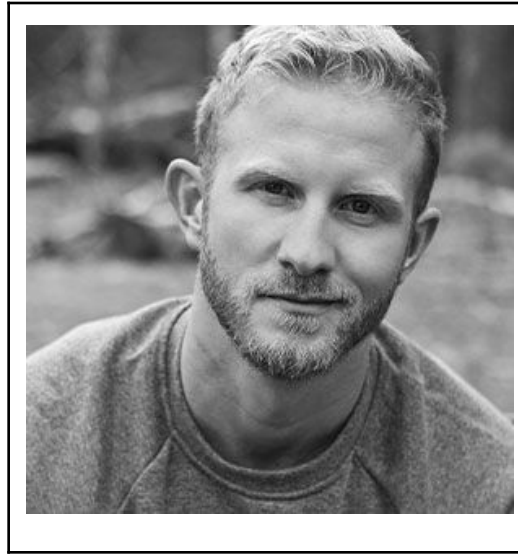
Frozen is approximately 2.5 hours with a 20 minute intermission, and is intended for audiences 6 and up.



This is Kaleigh Gorka. She will be playing Elsa in the play.



This is Synthia Yusuf. She will be playing Anna in the play.



This is David Light. He will be playing Kristoff in the play.



This is Adam Francis Proulx. They will be playing Olaf in the play.



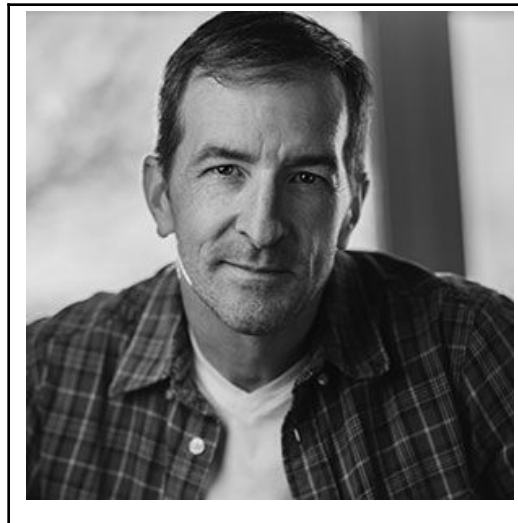
This is Andrew Prashad. He will be playing Hans in the play.



This is Darren Burkett. He will be playing Sven in the play.



This is Rebecca Hergett. She will be playing Queen Iduna in the play.



This is Jeff Schwager. He will be playing Weselton in the play.



This is Lyla Emery. She will be playing Young Elsa in the play.



This is Jorja Mastrapas. She will be playing Young Anna in the play.



This is Patrick Maubert. They will be playing King Agnarr and Oaken in the play.



This is Stephane Gaudet. He will be playing a villager and others in the play.



This is Julius Sermonia. He will be playing Pabbie and the Bishop in the play.



This is Katrina Phillip. She will be playing Bulda and a villager in the play.



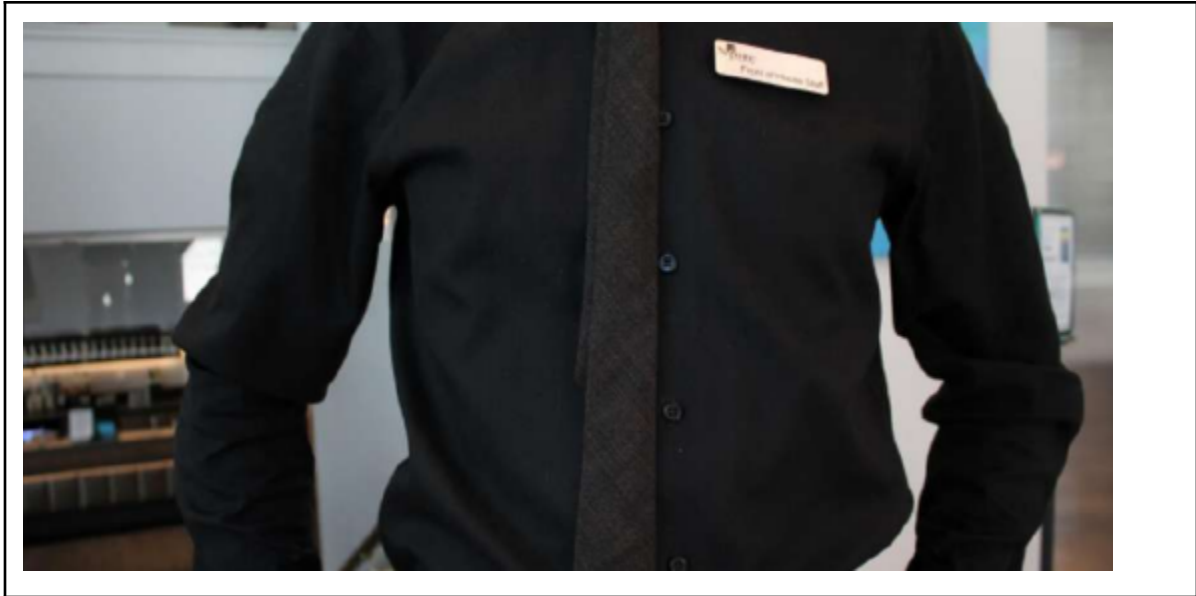
This is Zoë O'Connor. She will be playing a handmaiden and others in the play.



This is Maddie Maitzen. She will be playing a handmaiden and others in the play.

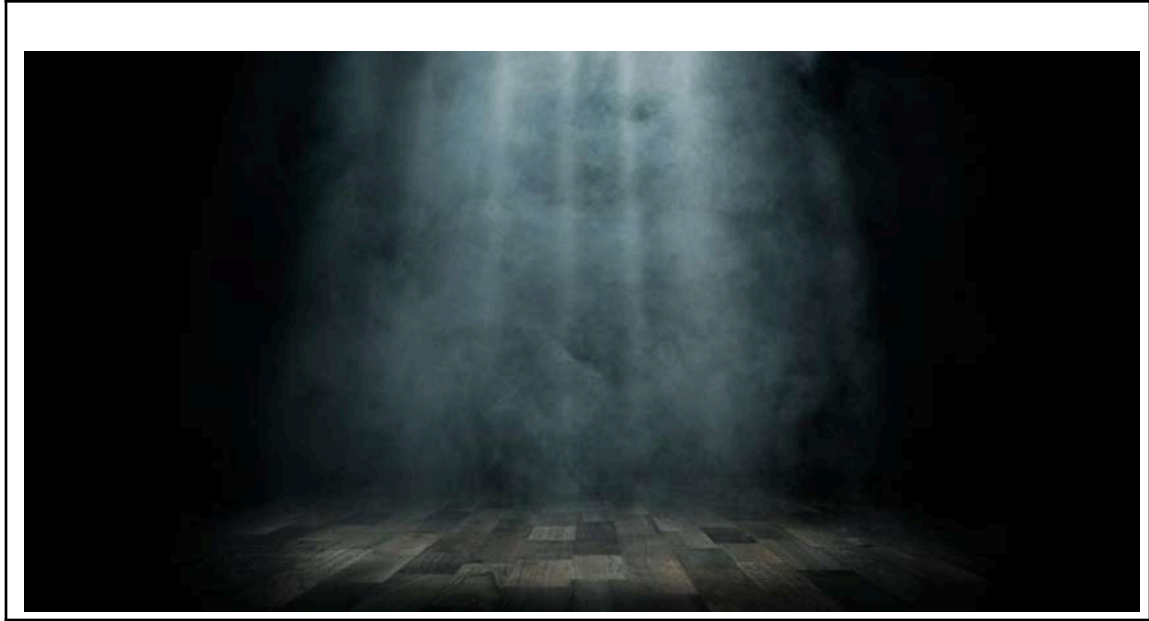


This show is a musical and can be loud at times.
If you do not like loud music or singing, please bring a set of headphones.



The Neptune Theatre staff will be wearing black shirts with a silver tag.

Please communicate with any of the staff if you have a question or need assistance.



There will be a fog machine pumping fog onto the stage. Fog may roll into the audience. It is completely safe and will go away after a few minutes.



Sometimes audience members clap after a song in the show is done. Typically, audiences also clap at the end of the performance.

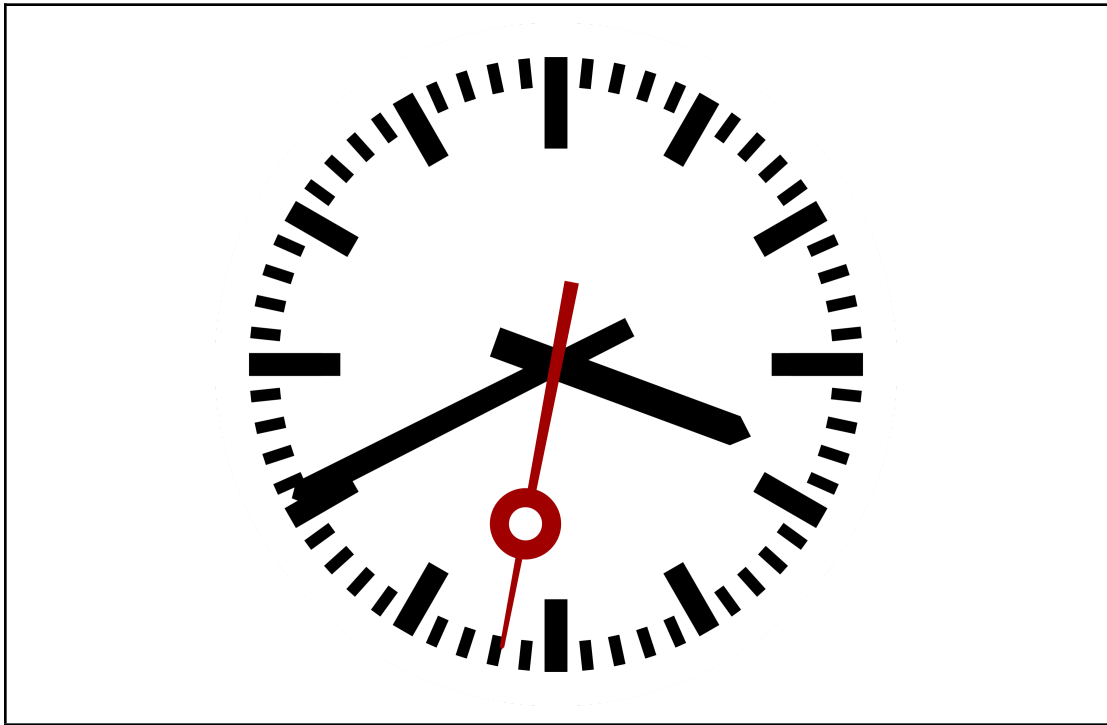
As this is a relaxed performance, we encourage audience members NOT to clap their hands. Instead, let's snap our fingers, or wave our hands in the air.



Throughout the show, 'Olaf' and 'Sven' dance and move around the stage. They are puppets, not a real snowman and reindeer. The puppets are controlled by actors who make them move and speak.

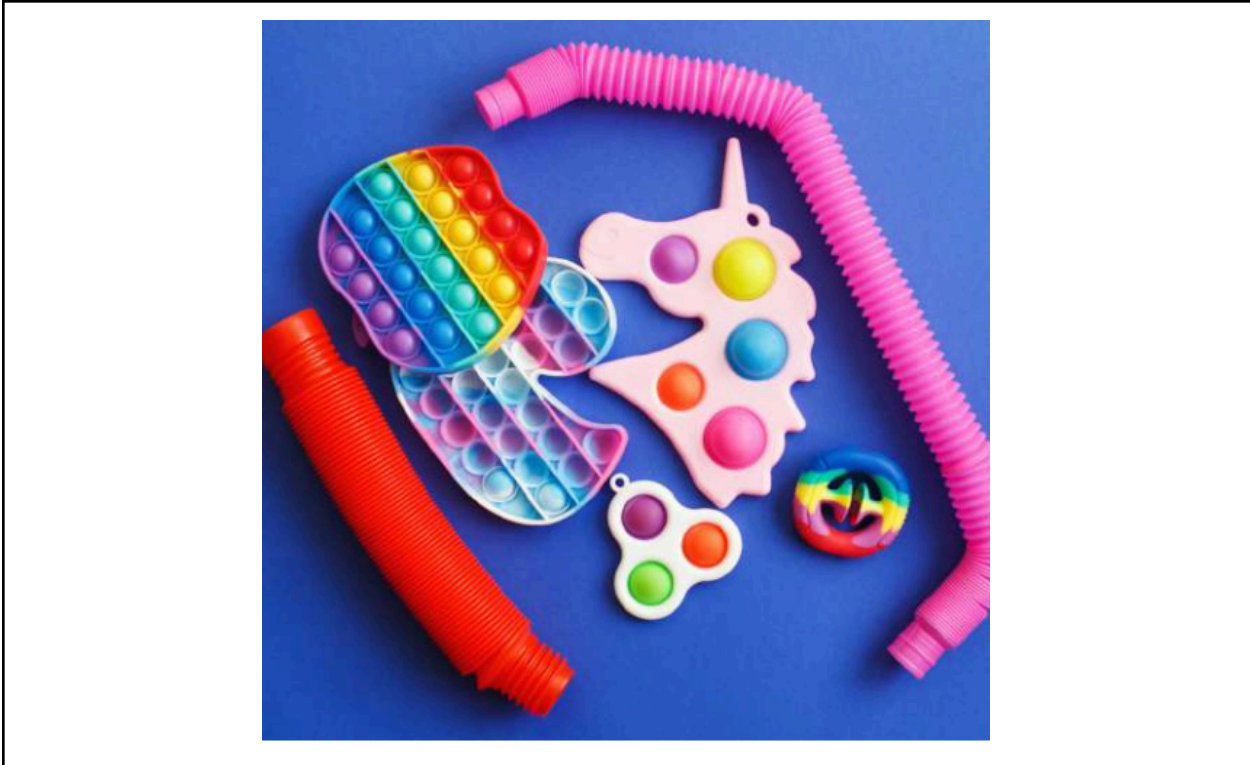


Throughout the play, actors have swords. These are real metal swords, but they are not sharp.



The show is approximately 2.5 hours long. It starts at 2:00PM and ends around 4:30PM. There is a 20 minute long intermission around 3:15PM.

If you need to leave the theatre before intermission or before the show is over, you are welcome to. We ask that you do so as quietly as possible. A member of staff will help you find your seat again when you are ready to re-enter the theatre.



We will have a Sensory Space outside of the theatre where you can go if you would like to at any point during your visit to the theatre.

Thank you for joining us at Neptune Theatre!

