

Welcome to **DAY 1** of the

NEPTUNE THEATRE KID **14 DAY** **CHALLENGE**



Today's Challenge involves the **first element of story-telling: The IDEA!**

What will I need?

- Pencil/paper
- Your favourite books and toys
- A phone to video or take a photo (if allowed)
- Imagination

How long will it take?

Approximately 1 hr

How can I share my challenge results?

Share with us on instagram or facebook @neptunetheatreschool

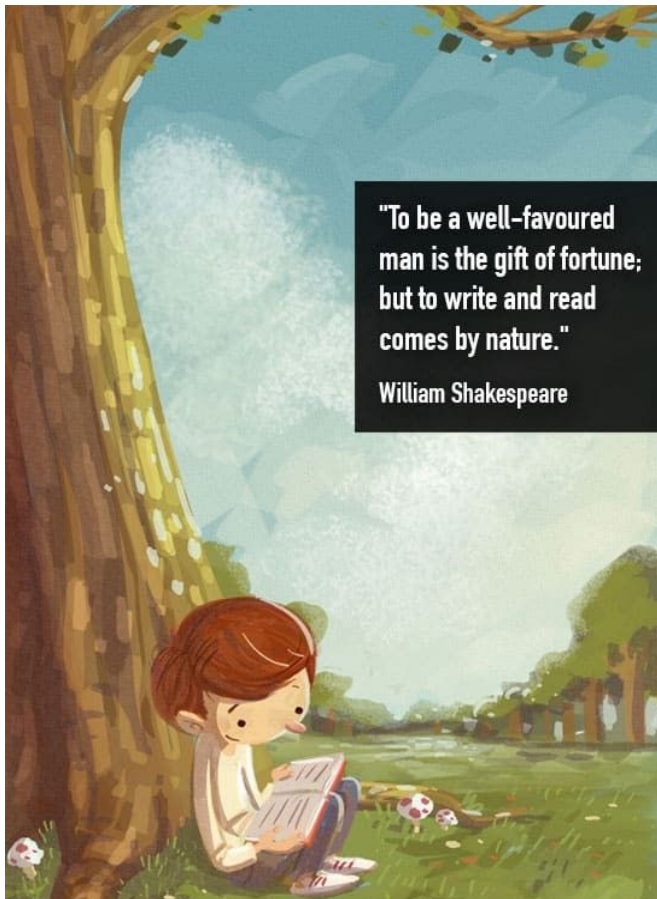
All activities can be done alone or shared with others and allow for social distancing.
Encourage Creativity and Exploration.

To join our email list and to give us feedback please [CLICK HERE](#)

Take a moment to think about all **your favourite stories, movies, books, TV shows and plays. Pick 4 of them to use as inspiration.**

EXPLORE: (25 mins)

- Find some toys to re-enact the story
- Draw a picture of what the movie poster could look like
- Tell a friend or family member about this great story in 3 sentences or less.
- Find your favourite book and read some of it outloud. Give the characters some different voices.



INVESTIGATE: (15mins)

- Take a moment to think about what makes these stories so great?
 - Characters?
 - Action?
 - Costumes?
 - Songs?

*You may want to write it down, or draw a picture, or even make a video describing your favourite elements.

CREATE: (20 mins)

Take a moment to create your own ideas for a new story/play or movie.

- Who are the key characters?
- Where does it take place?
- What is the most important moment in the story?

**Don't get too caught up in the details yet. If you have too many ideas, that's ok. This is not a test. Part of creating theatre and arts is to keep open to all thoughts and creative plans. Extra ideas may help you in the future. Keep an open mind.*

Theatre Expert Super Challenge!!!

MAKE A TABLEAU of your AMAZING NEW STORY (30 mins)

A **tableau** is a dramatic picture. The word "tableau" comes from the old French for "picture, or painted target. Tableau is the theatrical technique in which actors freeze in poses that create an expressive picture of one important moment in the play. Sometimes, in the **theatre**, the curtain rises and all the actors onstage are frozen in poses that create a compelling stage picture. Sometimes it is used as the last moment in a scene as the lights fade to black.

It can also be used to highlight important moments in a play. For example everyone on stage may freeze, while one actor will "step out of the scene" to speak to the audience directly - this is called a **monologue** or soliloquy.

- Take a photo and share with us @neptunetheatreschool on instagram or facebook with your parents permission. Be sure to give your photo a title!
- Remember to use expression in your face and to use your whole body to create what will look like an active image.
- ***Extra challenge:** how long can you hold the pose?

Thank you for PARTICIPATING!

DAY 2 will focus on storyboard and creating your very own beginning, middle and end to your new play

Bonus Theatre Game - Gift Shop (min 2 people; could be done digitally):

Someone is the shopper. The other person/people are items in the store. **Be sure to give yourself lots of room to make your "display" and allow hands off.*

The shopper gets to put on a fun character "shopper voice". They get to decide what department of the gift shop they are shopping in and what style of item they are looking for.



For example: (in an old granny voice)

Shopper: *"Gee willikers! I am so excited to be in the kitchen department of the store today. I cannot wait to get all the kitty themed items for my new kitty themed kitchen!"*

The shopper then closes their eyes and counts down "5-4-3-2-1" and everyone freezes (in tableau) into a fun cat shaped kitchen item.

The shopper then gets to go around and describe what people are.

For example: *"Oh look at this adorable kitty- shaped tea pot"*. Take turns and try all kinds of themes!

HAVE FUN!



*****This program has been created by the Director of Education of Neptune Theatre, Laura Caswell with the intention of bringing theatre education, curriculum connections and creativity into your home during this time of social isolation. Please feel free to share any thoughts or feedback at lcaswell@neptunetheatre.com.**

