

TOURC®

Study Guide



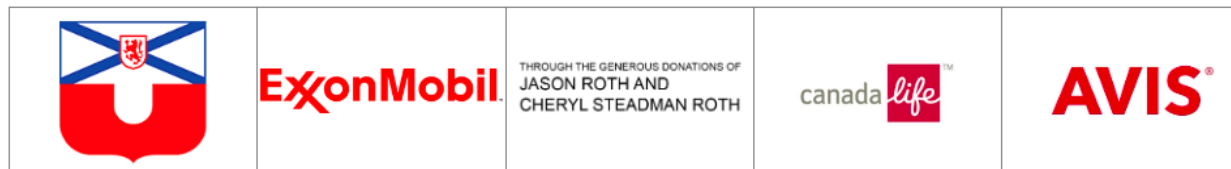
Book and lyrics by Lojo Simon

Music by Ian LeRoy

What's Included in the Study Guide:

Greeting Message & About TourCo	Page 3
Synopsis & Character List	Page 4
Theatre Etiquette	Page 5
Meet the Team: Cast/Director/Playwright	Page 6
Curricular Outcomes	Page 7
Overview of Themes, Context, and Vocabulary to Discuss	Page 8
Pre-Show Activities	Page 9
Worksheets	Page 10-12
Post-Show Reflection Questions & Activities	Page 13-15
Additional Resources & Fun Facts	Page 16-19
Rubrics	Page 20-22

A huge round of applause to our sponsors!





Message from the Director of Education

We are thrilled to be returning to schools in Nova Scotia. Neptune TourCo had to shift to digital presentations with the Covid-19 pandemic, but we are back bigger and better than ever!

Seeds of Change is a story of a young girl who sets out on a path of discovery. Join her as she learns about the environment, climate change, emotions, and the power of one small person.

We hope you enjoy the original songs, puppets, and fabulous performances in *Seeds of Change*, and we look forward to seeing you for live performances soon!

Laura Caswell, Director of Education

About Neptune Theatre's Touring Company



By bringing theatre to communities throughout the Maritimes, the Touring Company (TourCo) promotes theatre to a wider audience, thereby creating and fostering an interest in the performing arts. For our TourCo productions, we have professional design, local artists, and expert direction. Each production is accompanied by a study guide, bonus materials, and easily accessible video that can be shared with classes and students. With our community outreach initiatives and more, TourCo provides a unique opportunity to bring theatre to all ages!



Characters

Rosey Kate – our 10-year old hero, with big emotions

Nanny Goat – a goat turned guardian for Rosey Kate

Touchstone – a big-hearted jokester, who is Rosey's best friend

Thisbee – a helpful, thoughtful, friendly worker bee

Ferdinand – a Spanish-speaking swordfish from the sea

Father – Rosey's troubled father

Inspired by myth, fairy tale and Shakespeare's *The Tempest*, *Seeds of Change* fosters environmental literacy through the story of an ornery young girl who leaves the isolated Isle of Oro where she grew up and embarks on a journey of discovery about the world and herself.

With original songs and puppets, *Seeds of Change* explores topics in environmental science, including climate change, deforestation, ocean plastic and habitat loss through a story of wonder and empowerment appropriate for K-6th grade students. The play's poetic language and references to the English literary canon promote literacy in a fun and delightful way.

Theatre Etiquette

To go over with your class prior to the show!

- Whether you're in your own school or at the Neptune Theatre itself, you have a part to play as a respectful audience member. Please respect the performance space.
- Be respectful by actively listening with your ears, and actively watching with your eyes while the show is in progress.
- Please remember to turn off anything that beeps, bops, or buzzes. This includes cell phones and watches. Please note that recording any part of the performance or taking photos is not permitted.
- If the actors talk directly to you or ask you questions, please answer them! When the actors are just speaking to each other, please stay silent.
- Lastly, applause is the best way to show your enthusiasm and appreciation!



Meet the Team!

Emma Vickers (she/her): Emma is so excited to share this show with all of you! Emma had a fabulous time playing the energetic, enthusiastic, and curious little Rosey Kate, and hopes you all love her as much as she did.

Film/TV: Diggstown (CBC), Kids vs. Aliens (Outer Space Pictures Inc.). Theatre: Mind the Light (Halifax Fringe 2021), The Station (BARE Theatre Co.), If You Could Wear My Sneakers (Festival Antigonish YC). Training: Bachelor of Music (STFX), and the Canadian College of Performing Arts.

Noah Tran (he/him): Noah is a multidisciplinary performer based in Halifax, Nova Scotia. He has trained in the arts for the past ten years, and spends his time creating, performing, and teaching through music and theatre. He has worked with the Neptune Theatre School performing with the Youth Performance Company as well as teaching camps and classes for youth.

Julia Toppie (she/her): Julia is an actor and administrator with Neptune Theatre. She started as a student in 2008 and began teaching in 2009. Julia graduated from the Memorial University of Newfoundland's Bachelor of Fine Arts program, and completed the Neptune Theatre School's Musical Theatre Foundation program.

Select theatre credits: *Peter Pan*, *Pleasureville*, *It's a Wonderful Life* (Neptune Theatre); *Assassins*, *Heathers the Musical* (Whale Song Theatre); *Yes People, No People* (Halifax Fringe Festival).



Emma Vickers

Rosey Kate

Noah Tran

Nanny Goat / Touchstone /
Thisbee / Ferdinand / Father

Julia Toppie

Director



Lojo Simon

Notes from the Playwright: It is my intention that SEEDS OF CHANGE provide educators with a theatrical story that promotes environmental literacy as well as introduces students to Shakespeare. While the use of Shakespearean names, references and language is deliberate, please resist the urge to lean too heavily on *The Tempest*. The world and characters of this play should be given an opportunity to breathe on their own.

Where Does This Show Fit in the Curriculum?

Included in the following pages are a number of activities to engage your students, while corresponding with curricular outcomes at the same time

Pre-Show Activities

- Language Arts/The Science: Discussing terms and concepts with class (p. 8); Parts of a Seed, Recycled Match-Up, Word Search (p. 11-13)
- Language Arts/The Arts: Drama activity "Many Feelings" Poem (p. 9)
- Language Arts/Physical Education/The Arts: Drama activity "Walk Around Like...." (p. 10)

Post-Shor Activities

- Language Arts: Reflection Questions/Letter to the Director Activity (p. 14)
- Language Arts/Social Studies/Visual Arts: Drawing and Environment Action Plan (p.15-16)



Skills & General Curriculum Outcomes

Learners are expect to....

Language Arts:

1. speak and listen to explore, clarify, extend, and reflect on their thoughts, ideas, feelings, and experiences.
2. be able to communicate information and ideas effectively and clearly, and to respond personally and critically.
3. be able to interact with sensitivity and respect, considering the situation, audience, and purpose.

Science:

1. realize that the applications of science and technology can have both intended and unintended effects.
2. demonstrate perseverance and a desire to understand.
3. be sensitive to and develop a sense of responsibility for the welfare of other people, other living things, and the environment.
4. analyze interconnectedness of living things and the environment.
5. construct a device in response to a problem.

Physical Education:

1. demonstrate motor skills in all movement categories using efficient and effective body mechanics.

Social Studies:

1. demonstrate an understanding of the interactions among people, places, and the environment.

Visual Arts:

1. bring personal meaning to artwork and communicate their discoveries.

Overview of Themes, Context, and Vocabulary Within the Play

Themes	Context	Vocabulary (to go over with your class prior to the show)
Nature	The show centres around Rosey Kate's impact on the environment and explores how many different elements of nature are connected.	Ecosystem Climate Weather Atmosphere Carbon (Carbon Dioxide)
Fairytales	Some of the characters in Seeds of Change are fantastical creatures and possess magical powers.	Stories vs Reality Non-Fiction vs Fiction Legends Mythology
Climate Change	At the beginning of the play Rosey Kate has very little regard for the environment but when she is faced with the consequences of her own actions she realizes how important it is to take care of our planet.	Carbon Footprint Deforestation Global Warming Fossil Fuels Garbage Patch
Personal Growth	Rosey Kate experiences strong emotions that prevent her from making connections with others but by the end of the show she learns how to communicate and express those feelings in a healthy way.	Support Trust Honesty Emotional Regulation Empathy

Pre-Show Activity #1

The Many Feelings Poem

Students will create a poem about their feelings using the prompting lines below.

Teachers may select volunteers to share their poems with the class.

[Click here for the activity page](#)

Many Feelings

A poem by: _____

I have many feelings,

I _____ when I'm happy,

I _____ when I'm sad,

I _____ when I'm scared,

I _____ when I'm mad,

I love to feel _____,

I don't like to feel _____,

I am proud of being me because _____

Pre-Show Activity #2

Drama Game – Walk Around Like....

Students will need space to move around. Ask students to move around the room the way they normally would, and then layer characters, scenarios, and emotions over top.

Once you do this exercise a couple of times, ask for solo volunteers or small groups to silently act out an character, scenario, and emotion. Have the rest of the class guess who they are, what is happening, and how they're feeling. Discuss what made this clear.

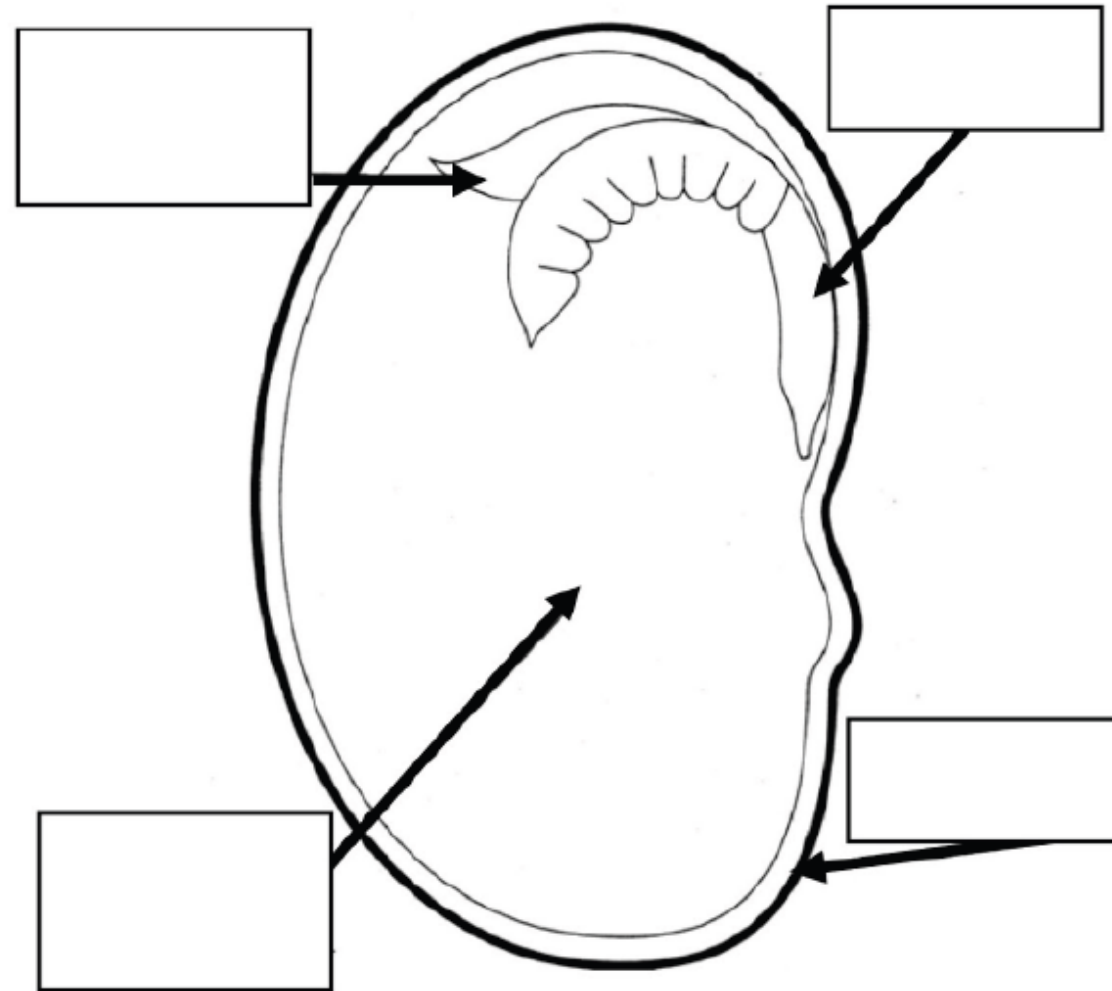
[Click here for the activity page](#)

Walk around like you're....

Emotions	Characters	Scenarios
• Scared	• Royalty (queen, king, etc.)	• In a blizzard
• Sad	• A superspy	• In a jungle
• Overjoyed	• An astronaut in outer space	• Playing soccer
• Suspicious	• A lion	• Late for school
• Angry	• A gigantic whale	• In the ocean

Scientist: _____

Parts of a Seed



Word Bank

seed coat

root

leaves

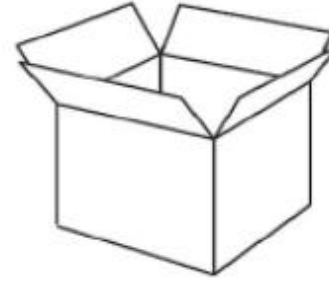
food



Recycle Match-Up

Color each item and draw a line to match it to the correct bin!

(Hint: Aluminum items are usually silver, shiny, and can be crushed.)



NAME:

DATE:

Seeds of Change Word Search

G M X E T L J A J T K N O E I
E S Q R G D A G L E S S A F O
T R E E E A A O V L F H V T C
L Q H H K D S R C C A R B O N
K Y H P A A U M O Y R N R Y U
W I I S E O R C J C A I M C O
B J J O E E K G E E W N Z S G
U E I M H M Y N C R U L M C E
B E V T E N U O Z C R Q I G S
Y W A A O S E E B O P H F O U
P E Z L C K O Y C M D H C S E
W I J G Q M R Q V Q K T O V R
O C L I M A T E T G M R E S L
U T X S U A J Y U F X A Y J T
X M W P U G Z Y I C T E Z E B

WEATHER

CLIMATE

CARBON

EARTH

TREE

OCEAN

ATMOSPHERE

BEE

SUN

GAS

COAL

OIL

REDUCE

REUSE

RECYCLE



Post Show Activity #1

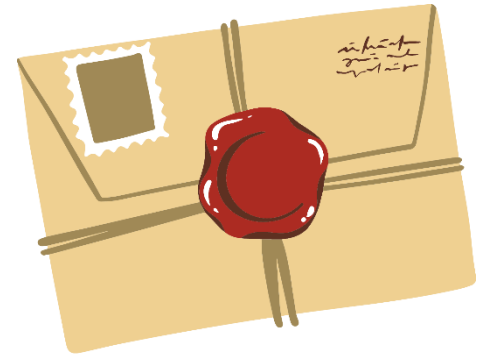
Reflect & Share

Review with the class what the show was about and encourage a class discussion about what they thought of the performances. If students need to be reminded of what the show was about, use the overview page to help.

Students should be encouraged to think critically about the performance and express themselves throughout the discussion and in the following writing activity.

ACTIVITY: Ask Students to write a letter to the director.

- Tell us a little about yourself.
- What did you like or not like about the performance?
- What did you think of the characters? Which character was your favourite and why?
- What did you think about the shows commentary on environmental issues?
- Write two questions for the cast and/or creative team.



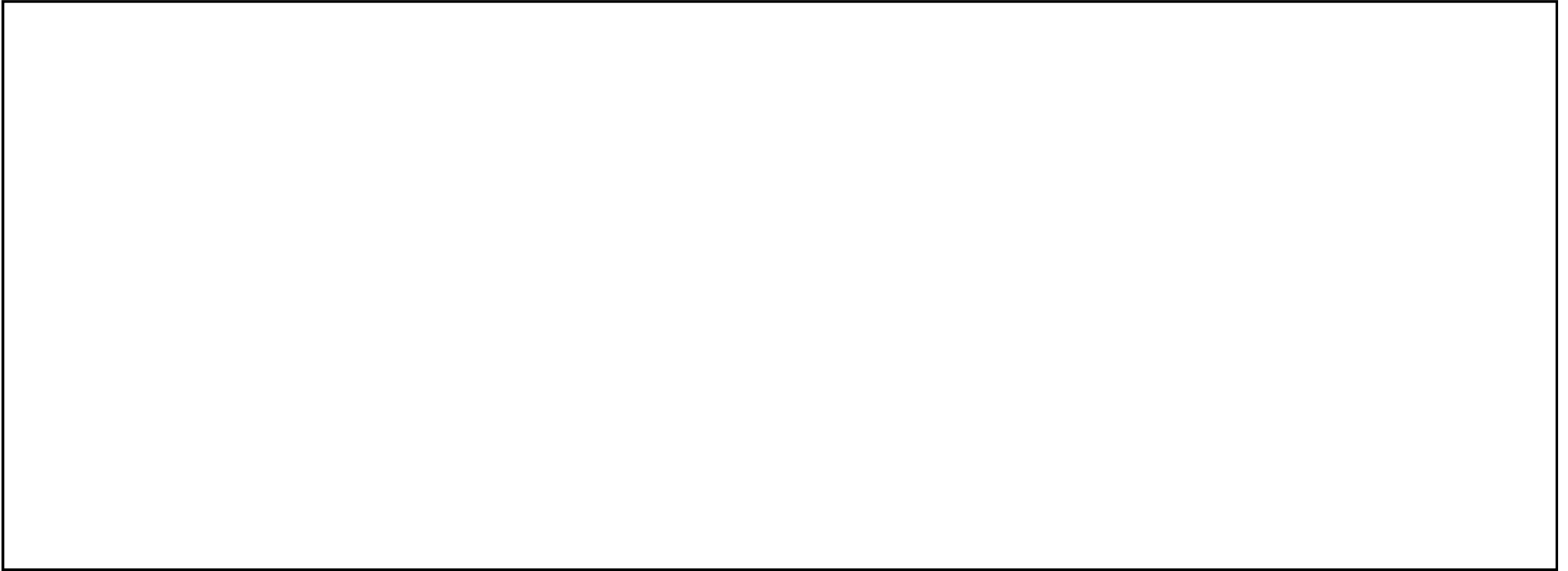
Once students have written their letter, you may encourage them to draw a picture of their favourite part of the play or decorate their letter.

If you would like to send the letters to Neptune Theatre, they can be sent to:
The Neptune Theatre School, 1593 Argyle Street, Halifax, Nova Scotia, B3J 2B3

Post Show Activity #2

What can you do to save the environment?

Student's Name: _____

A large, empty rectangular box with a black border, intended for a student to draw a picture of themselves taking action to help the environment.

Instructions: Draw a picture of yourself taking action to help the environment.

****For older grades, include the Environmental Action Plan Activity listed below****

Environmental Action Plan

Student's name: _____

As a class, small groups, or individuals create an Environmental Action Plan: An action plan is a feasible step by step process of taking meaningful and appropriate action in our communities.

Example: Organizing a garbage pick up day at school, creating a recycling guide for the classroom, writing a letter to your MP.

Action Plan Focus: _____

Timeline: _____

Step 1: _____

Step 2: _____

Step 3: _____

Explain the significance and environmental impact of your plan:

Action Plan Reflection (After you've put your Plan into Action, reflection on your experience and the plan's success):

Additional Classroom Resources:



Sweet Virginia

- Lesson Plans about Bees and their impact on the Environment
- <http://sweetvirginia.org/hive-alive/>



Video About Global Warming

- Explained by Bill Nye the Science Guy
- <https://www.youtube.com/watch?v=EtW2rrLHso8>



The Ecology Action Centre

- Keep up to date on environmental issues, biodiversity protection, and environmental justice in Nova Scotia
- <https://ecologyaction.ca/latest-updates>

Sets & Props

Seeds of Change is about environmental awareness so we wanted to create our props and sets out of recycled materials or reuse things from other shows.

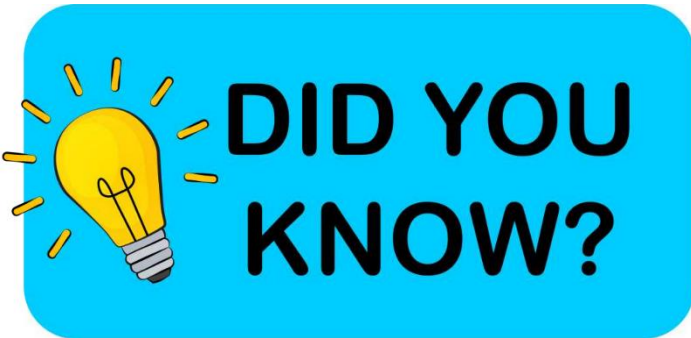
TREE: Our tree is made out of cardboard, brown paper, and sticks from the ground.

BEEHIVE: The beehive is made out of pool noodles and a recycled coffee can.

CANOPY: Our canopy is pieced together with reused sheets from our theatre storage.



**DID
YOU
KNOW?**



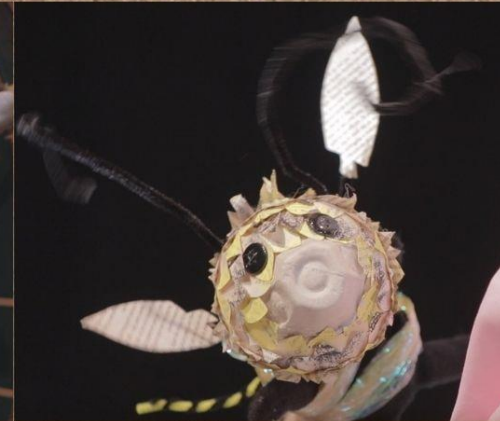
Reduce means to cut back on the amount of trash we generate.

Reuse means to find new ways to use things that otherwise would have been thrown out. **Recycle** means to turn something old and useless (like plastic milk jugs) into something new and useful (like picnic benches, playground equipment and recycling bins)

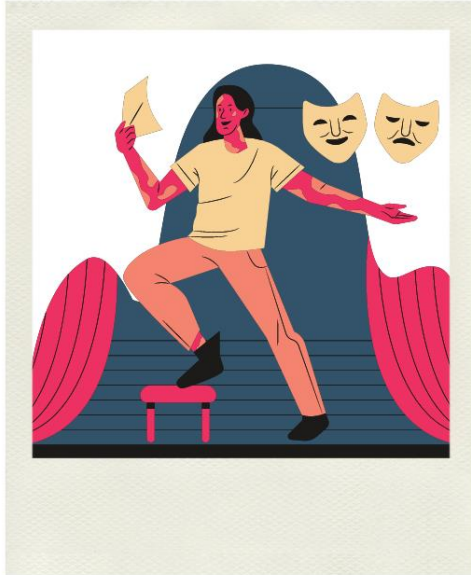
NANNY GOAT: is made out of cardboard and brown paper

THISBEE: is made out of egg carton, recycled paper and glove, pipe cleaners and tissue paper

FERDINAND: is made out of plastic bottles, bottle caps, a pool noodle, garbage bags and wooden dowels



BEHIND THE SCENES



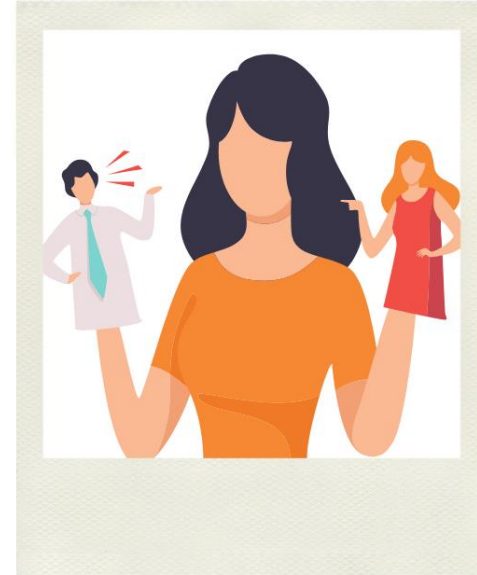
LINKS TO VIDEOS:

Meet the Actors:

<https://www.youtube.com/watch?v=jtTglpeBFGQ>

Meet the Puppets:

<https://www.youtube.com/watch?v=gWPT3z-8qVo>



Check out these BEHIND THE SCENES videos for *Seeds of Change*!

Meet the actors and puppets who appear in the show!

Pre-Show Activity #1 – Many Feelings Poem Rubric

Categories	Needs Improvement (1)	Developing (2)	Satisfactory (3)	Exceptional (4)
Understanding of Activity				
Completeness of Writing				
Clarity of Writing				
Spelling & Grammar				

Post-Show Activity #1 – Reflection Letter

Categories	Needs Improvement (1)	Developing (2)	Satisfactory (3)	Exceptional (4)
Clear Communication of Ideas				
Gives Examples From the Play				
Spelling & Grammar				

Post-Show Activity #2 – Action Plan Drawing Rubric

Categories	Needs Improvement (1)	Developing (2)	Satisfactory (3)	Exceptional (4)
Follows Instructions				
Clear Communication of Ideas				
Variety of Art Techniques				
Spelling & Grammar				