

# Hopper Window Series

---

## Index

Product Features.....	Hop-2
Elevations.....	Hop-4
Section Details:	
Interior Ovalo Profile (Cam handle).....	Hop-5
Interior Ovalo Profile (Spring Catch).....	Hop-6
Stacking & Mulling Details.....	Hop-6
Typical Wall Sections.....	Hop-9

# Hopper Window Series

---

## Product Features

### **STANDARD FEATURES** (Fixed unit):

- ~ Natural or prime time 2, eastern white pine (clear interior/finger joint exterior)
- ~ Frame construction design for 4 9/16" jambs
- ~ Clear insulated glass
- ~ Choice of black, grey or aluminum spacer bar
- ~ EM600 & 566 subsill

### **SPECIFICATIONS:**

#### **FRAME:**

- ~ 1 1/16" thick X 4 9/16" width/base jamb in pine (or other wood species).
- ~ Jamb extension is 2 1/32" thick and is available up to 16" wide.
- ~ Frame is manufactured with Bulb weather-strip (white or beige).

#### **SASH:**

- ~ 1 5/16" thick in clear pine (or other wood species).
- ~ Interior profiling is oval (restoration, heritage & legacy profiles are not available).
- ~ Sash is manufactured with Polyflex weather-strip (white or black).

#### **HARDWARE:**

- ~ Cam handle: white or satin
- ~ Spring catch: satin

#### **SCREENS** (aluminum) exterior application:

- ~ White (standard)
- ~ Coppertone (standard)
- ~ Brown
- ~ Black
- ~ Beige
- ~ Ivory
- ~ Green
- ~ Mill finish
- ~ Norcoat finish

Aluminum screens are manufactured with 90 degree angled corners. (Note: Corners will not match Norcoat finish) Black, grey fiberglass mesh & Crystal Clear screen mesh available. Aluminum mesh is available upon request.

# Hopper Window Series

---

## Product Features

### **GRILLES:**

#### **SIMULATED DIVIDED LITE (SDL):**

Exterior sdl available in putty & ovalo

~ 5/8"

~ 7/8"

~ 1 1/4"

~ 1 3/4"

~ 2"

~ 2 1/4"

Interior sdl available in ovalo only

~ 5/8"

~ 7/8"

~ 1 1/4"

~ 1 3/4"

~ 2"

~ 2 1/4"

#### **WOOD REMOVABLE GRILLES:**

~ 7/8"

~ 1 1/4"

Wood removable grilles are complete with wood surround and only available in ovalo profile.

#### **ALUMINUM GRILLES:**

Aluminum grilles are located between the glass and only available as rectangular. These grilles are available in white or white Georgian.

Pencil grilles are located between the glass and are available in 3/8" pewter or brass.

#### **LEAD OVERLAY:**

~ 1/4"

~ 3/8"

~ 1/2"

Lead overlay can be applied to one or multiple faces of glass, however, cannot be applied to the low-e surface. Lead overlay is available in patina or silver lead. Custom patterns are available upon request.

# Hopper Window Series

## Elevations

<div> <div>GLASS</div> <div>M.O.</div> <div>R.S.O.</div> <div>BOX</div> </div>	14-7/8"	18-13/16"	26-11/16"	34-9/16"	19-9/16"	26-15/16"	24-5/8"	23-5/8"	27-7/16"	34-13/16"	32-1/2"	31-1/2"	35-5/16"	42-11/16"	40-3/8"	39-3/8"	43-3/16"	50-9/16"	48-1/4"	47-1/4"
	23"	26-15/16"	34-13/16"	42-11/16"																
	21"	24-7/8"	32-3/4"	40-5/8"																
	19-11/16"	23-5/8"	31-1/2"	39-3/8"																

### Notes:

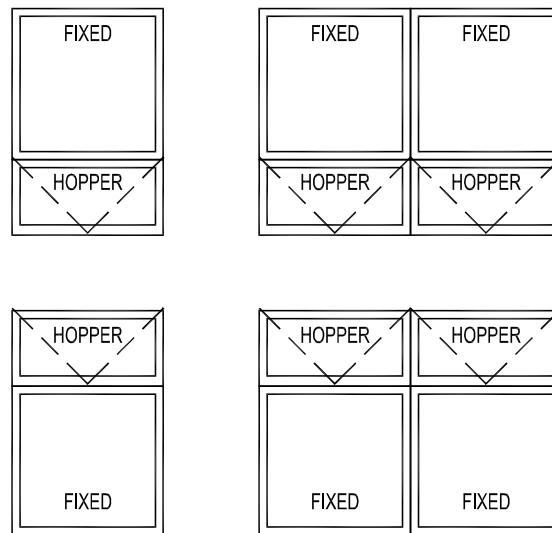
R.S.O. for additional combinations equals the sum of the unit size widths plus 1" and the sum of the unit heights plus 1 1/4".

M.O. for additional combinations equals the sum of the unit size widths or heights plus 3 5/16".

R.S.O. for stacked combinations mulled two or more wide and over 84" in width or height, it is recommended to add 11/16" filler for each stacked layer in height.

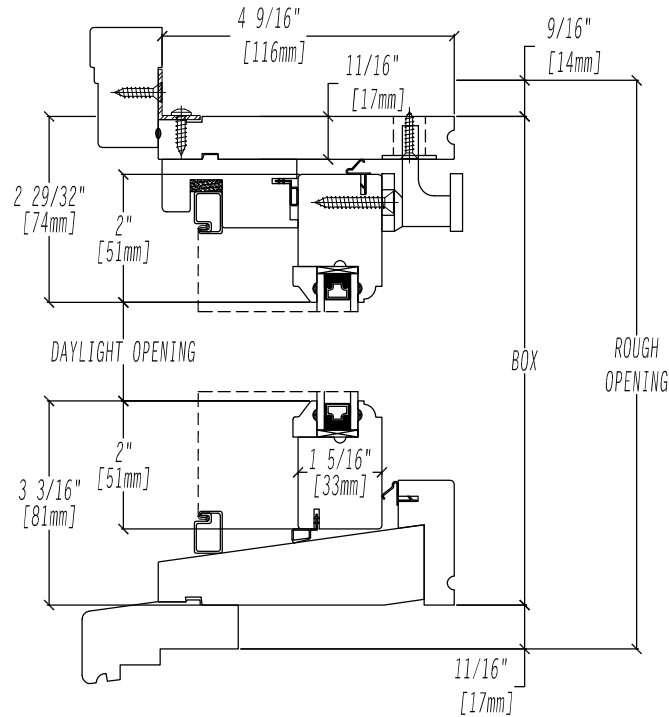
9.84 ← Glass Daylight Opening square footage.

### Suggested Hopper combinations:

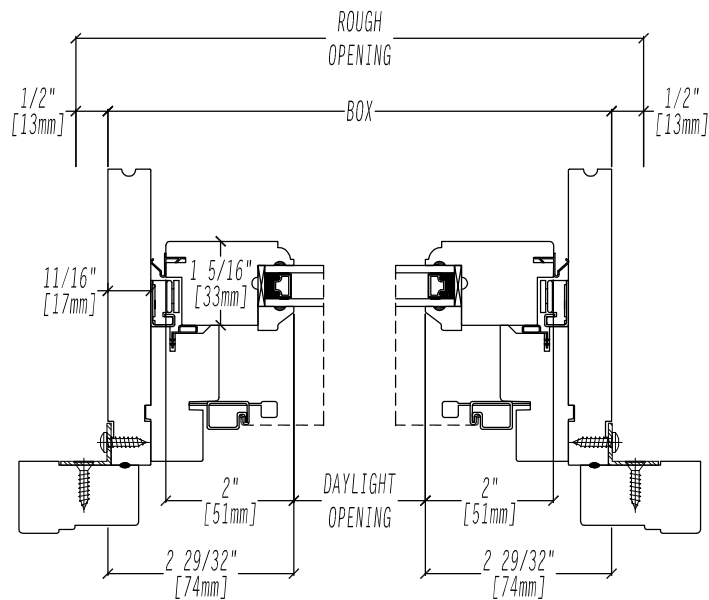


# Hopper Window Series

## Section Details - Cam Handle



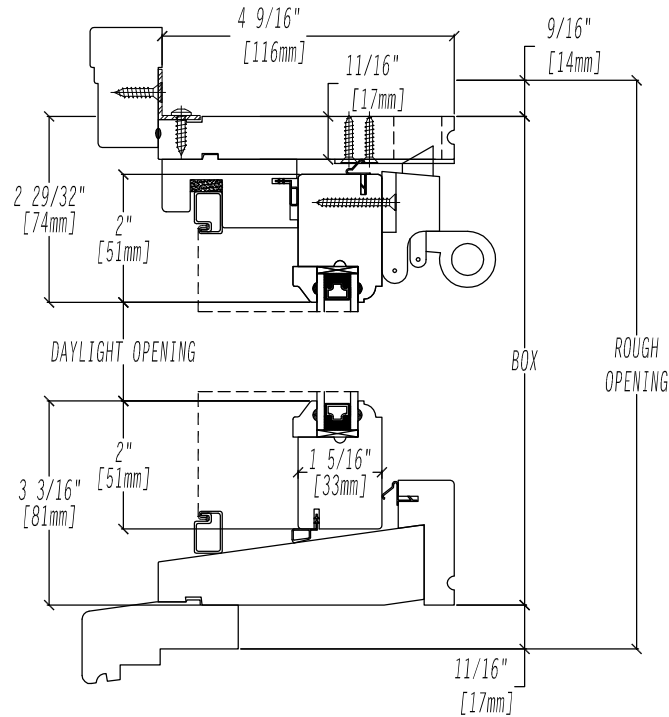
HOPPER - HEAD & SILL JAMB DETAIL



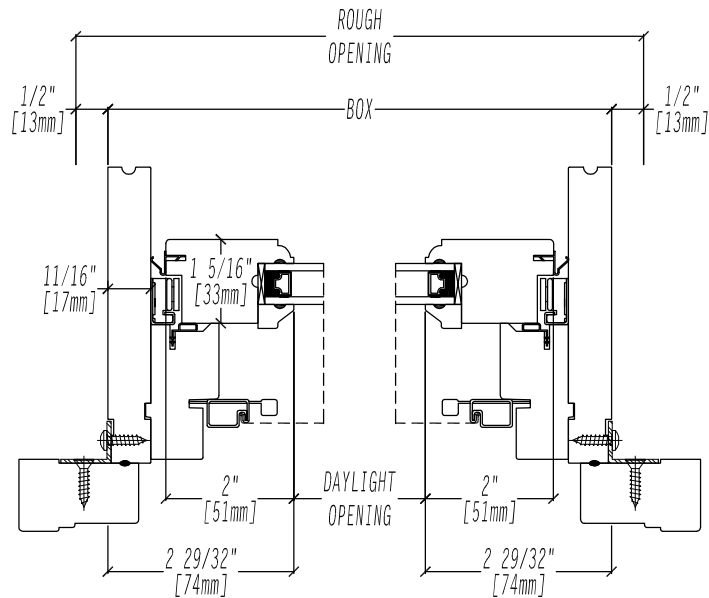
HOPPER - SIDE JAMB DETAIL

# Hopper Window Series

## Section Details - Spring Catch



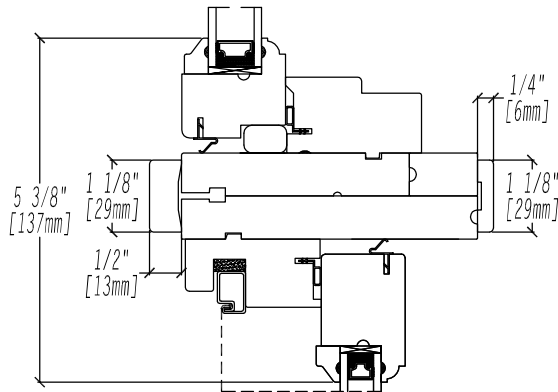
HOPPER - HEAD & SILL JAMB DETAIL



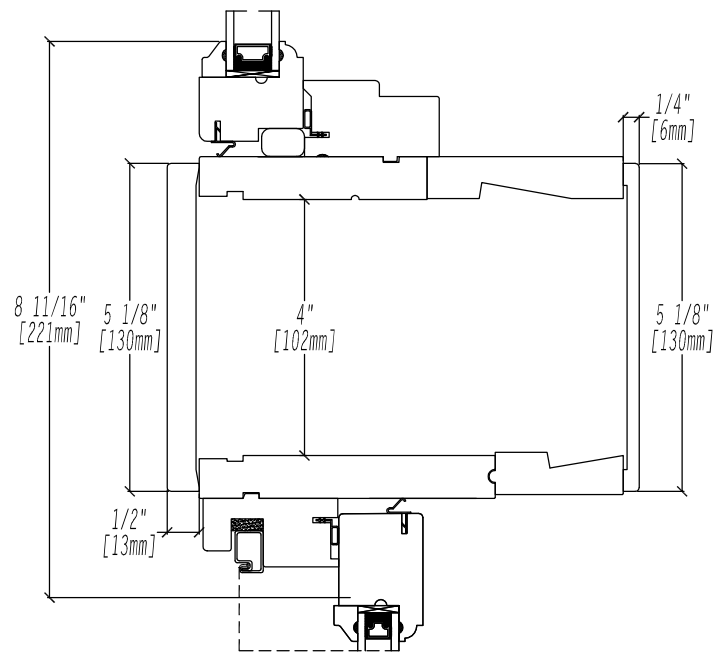
HOPPER - SIDE JAMB DETAIL

# Hopper Window Series

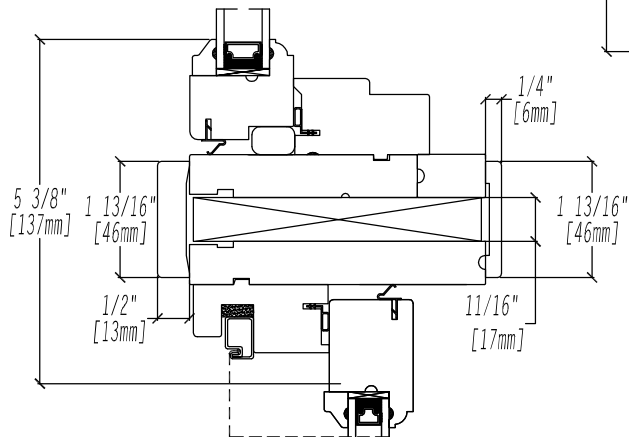
## Stack Details



TRANSOM / HOPPER STACK  
4 9/16" JAMB



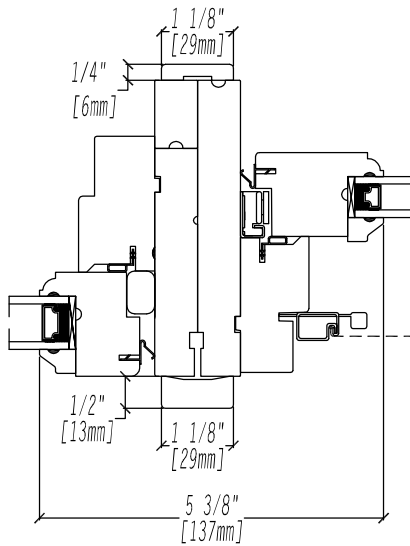
TRANSOM / HOPPER STACK  
6 9/16" JAMB C/W POCKET



TRANSOM / HOPPER STACK  
4 9/16" JAMB C/W FILLER

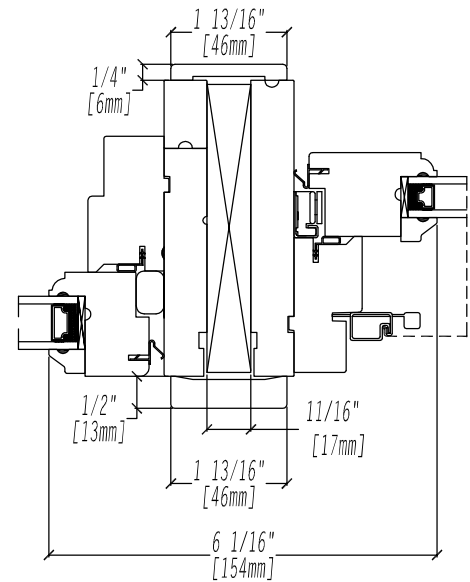
# Hopper Window Series

## Mull Details



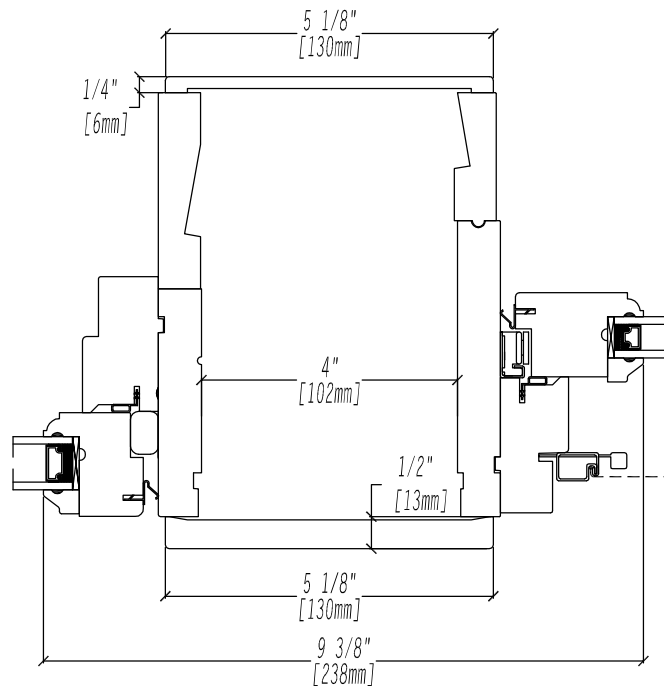
TRANSOM / HOPPER MULL

4 9/16" JAMB



TRANSOM / HOPPER MULL

4 9/16" JAMB C/W FILLER



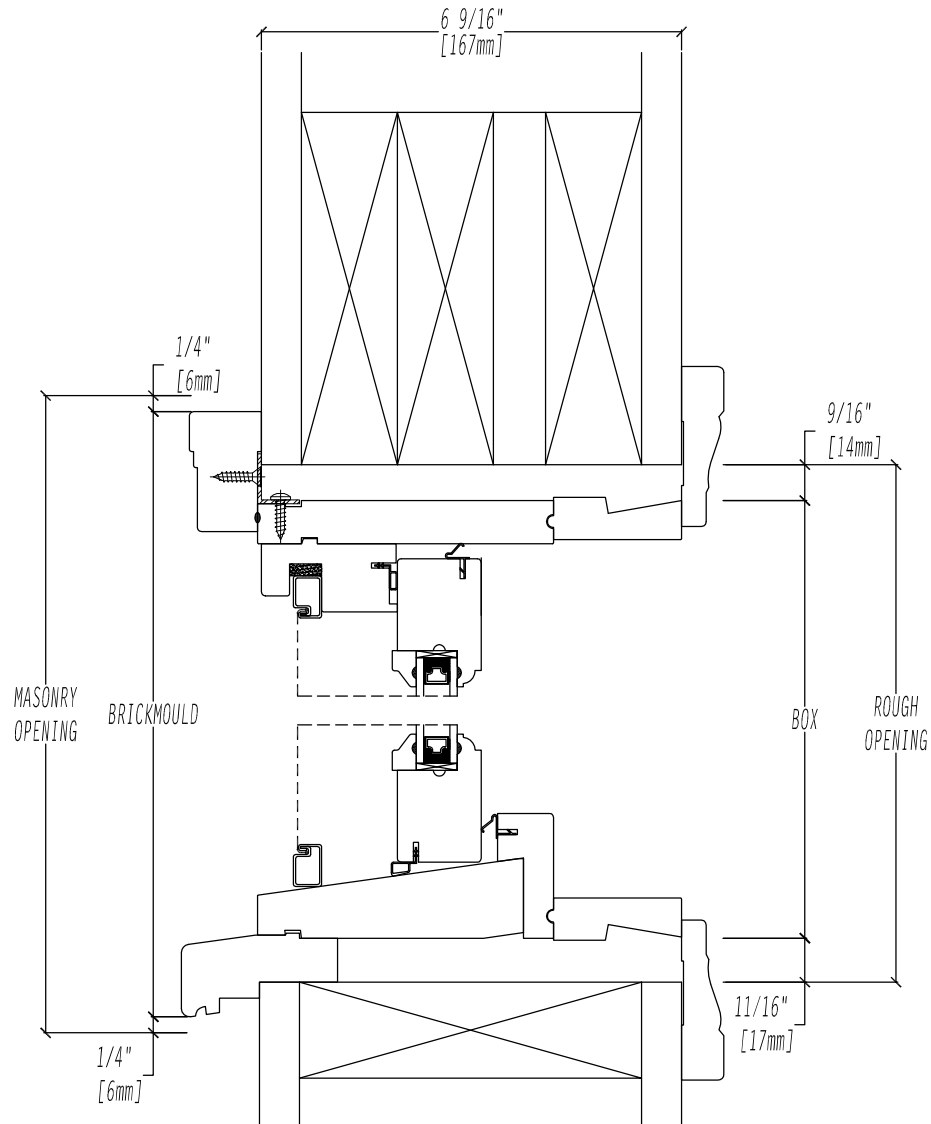
TRANSOM / HOPPER MULL

6 9/16" JAMB C/W POCKET



# Hopper Window Series

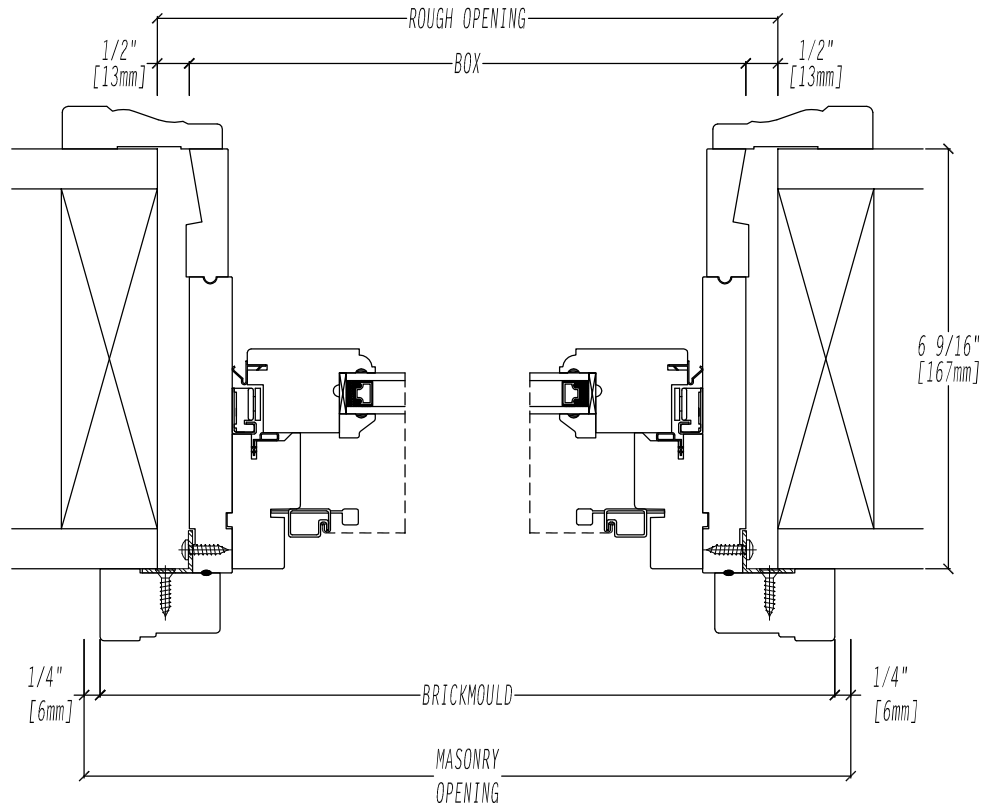
## Wall Section Detail



HOPPER - TYPICAL WALL SECTION DETAIL

# Hopper Window Series

## Wall Section Detail



HOPPER - TYPICAL WALL SECTION DETAIL