

# Octagon

---

## Index

|                               |       |
|-------------------------------|-------|
| Product Features.....         | OCT-2 |
| Section Details:              |       |
| Operator.....                 | OCT-3 |
| Fixed .....                   | OCT-4 |
| Sash Stop (SS).....           | OCT-5 |
| Direct Set (PW Profiled)..... | OCT-6 |
| Typical Wall Sections.....    | OCT-7 |

# Octagon

## Product Features

### **STANDARD FEATURES** (Fixed unit):

- ~ Natural or prime time 2, eastern white pine (clear interior/finger joint exterior)
- ~ Frame construction design for 3 1/2" jambs
- ~ Clear insulated glass
- ~ Choice of black, grey or aluminum spacer bar
- ~ EM600 & 566 subsill

### **SPECIFICATIONS:**

#### **FRAME:**

- ~ 11/16" thick X 3 1/2" width/base jamb in pine (or other wood species).
- ~ Jamb extension is 21/32" thick and is available up to 16" wide.
- ~ Frame is manufactured with Bulb weather-strip (white or beige).

#### **SASH:**

- ~ 1 5/8" thick in clear pine (or other wood species).
- ~ Interior profiling is ovalo or restoration profile.
- ~ Sash is manufactured with Polyflex weather-strip (white or black).

#### **OPTIONS:**

- ~ Octagons available as operating, fixed, sash stop & direct set units.

#### **HARDWARE:**

- ~ Push out hardware in aluminum or white with bright brass butt hinges

#### **SCREENS** (aluminum) – interior application:

- ~ White (standard)
- ~ Coppertone (standard)
- ~ Brown
- ~ Black
- ~ Beige
- ~ Ivory
- ~ Green
- ~ Bronze
- ~ Mill finish
- ~ Norcoat finish

Aluminum screens are manufactured with 22.5 degree angled corners. (Note: Corners will not match Norcoat finish) Black, grey fiberglass mesh & Crystal Clear screen mesh available. Aluminum mesh is available upon request.

# Octagon

## Product Features

### **GRILLES:**

#### **SIMULATED DIVIDED LITE (SDL):**

Exterior sdl available in putty & ovalo

~ 5/8"

~ 7/8"

~ 1 1/4"

~ 1 3/4"

~ 2"

~ 2 1/4"

Interior sdl available in ovalo & restoration

~ 5/8"

~ 7/8"

~ 1 1/4"

~ 1 3/4"

~ 2"

~ 2 1/4"

#### **WOOD REMOVABLE GRILLES:**

~ 7/8"

~ 1 1/4"

Wood removable grilles are complete with wood surround and only available in ovalo profile.

#### **ALUMINUM GRILLES:**

Aluminum grilles are located between the glass and are available rectangular. These grilles are available in white or white Georgian.

Pencil grilles are located between the glass and are available in 3/8" pewter or brass.

#### **LEAD OVERLAY:**

~ 1/4"

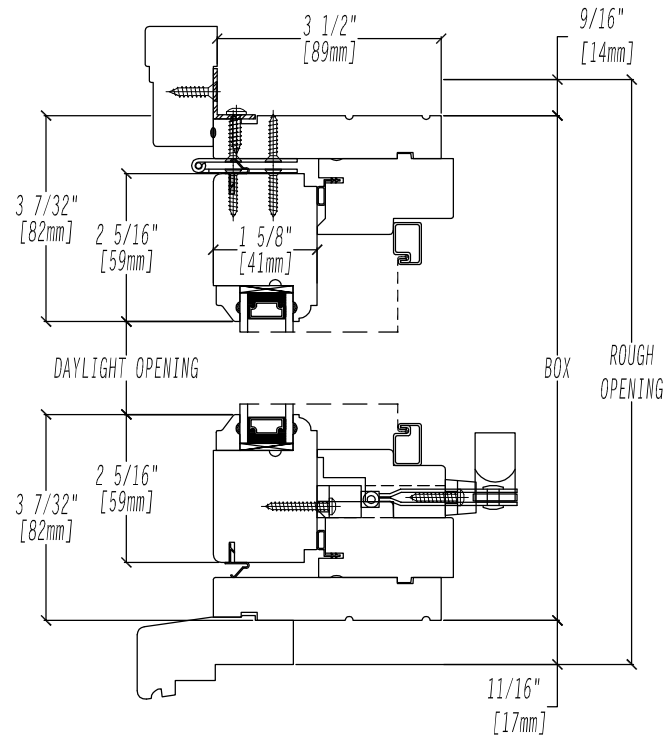
~ 3/8"

~ 1/2"

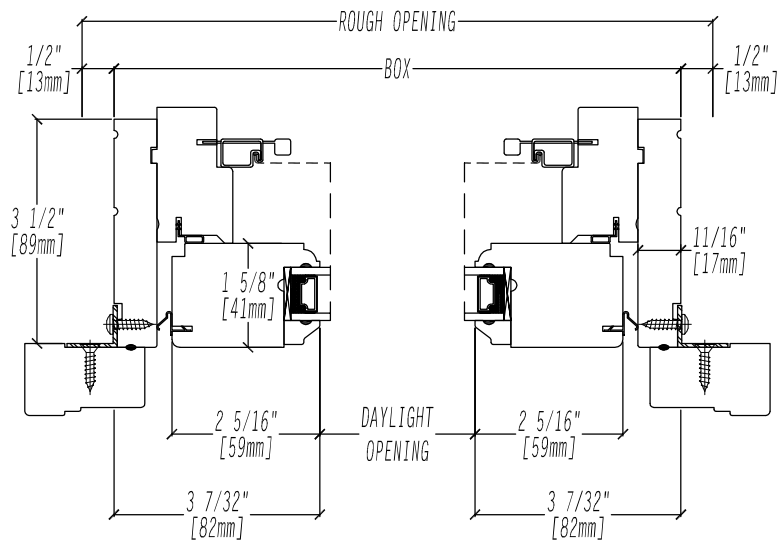
Lead overlay can be applied to one or multiples faces of glass, however, cannot be applied to the low e. Lead overlay is available in patina or silver lead. Custom patterns are available upon request.

# Octagon

## Section Details - Operator



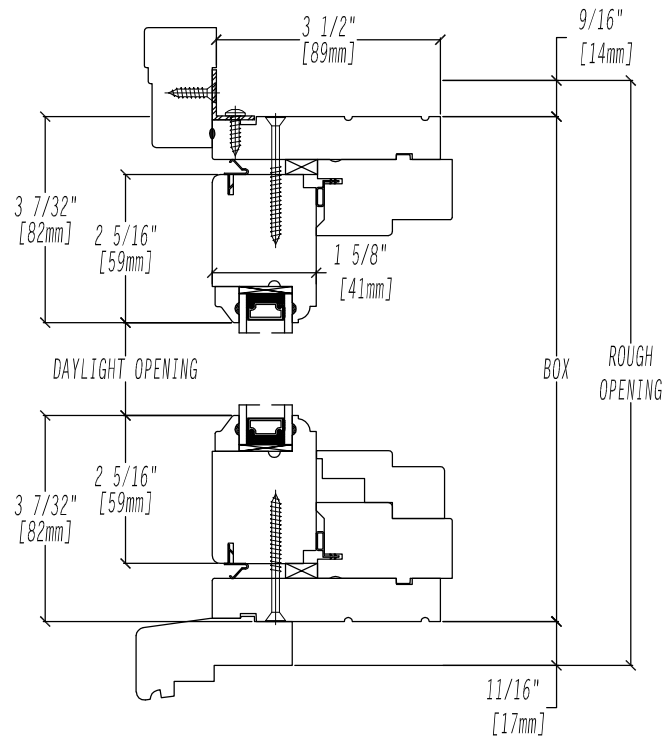
OCTAGON - HEAD & SILL JAMB DETAIL



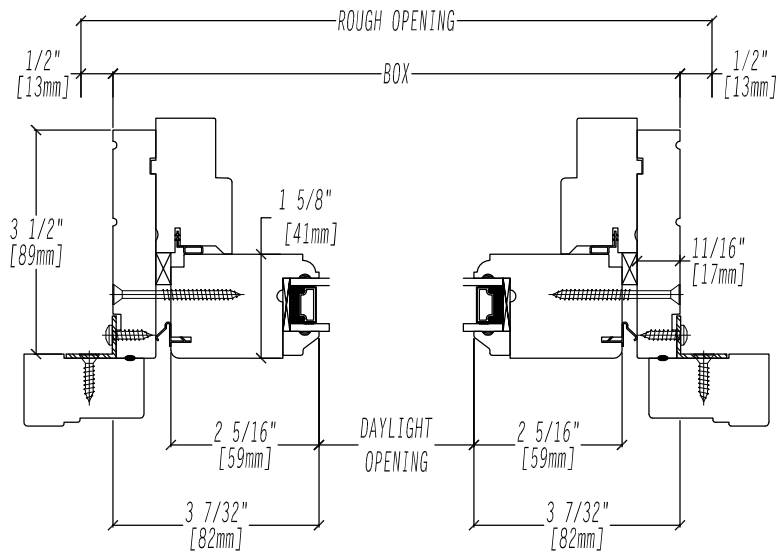
OCTAGON - SIDE JAMB DETAIL

# Octagon

## Section Details - Fixed



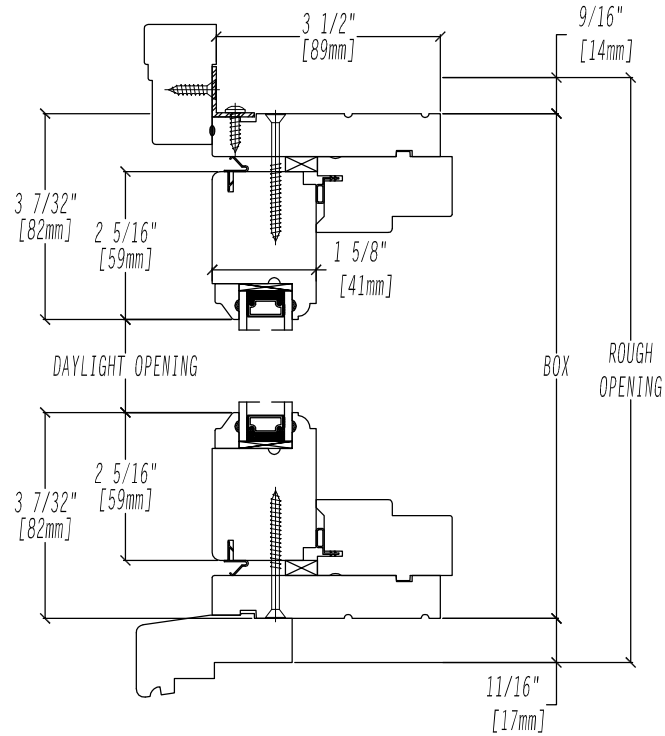
OCTAGON - HEAD & SILL JAMB DETAIL



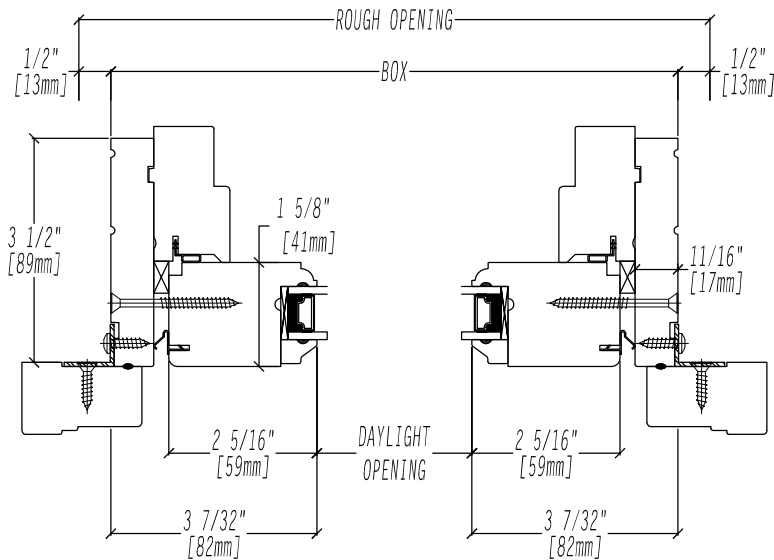
OCTAGON - SIDE JAMB DETAIL

# Octagon

## Section Details - Sash Stop (SS)



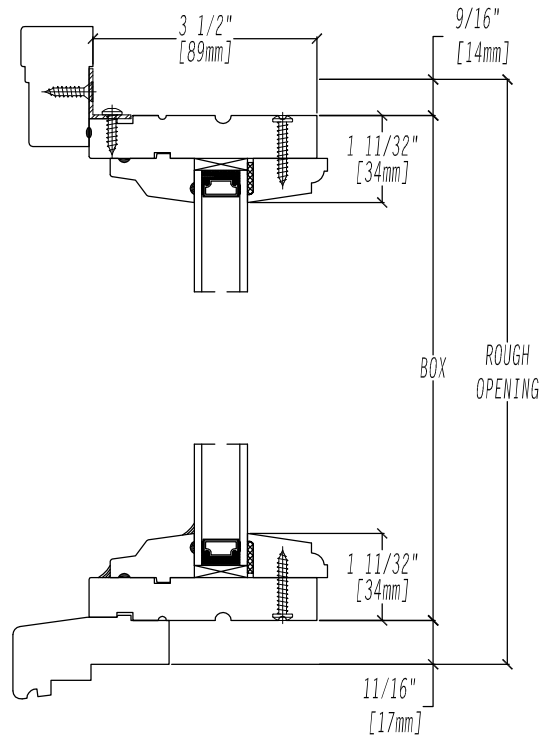
OCTAGON - HEAD & SILL JAMB DETAIL



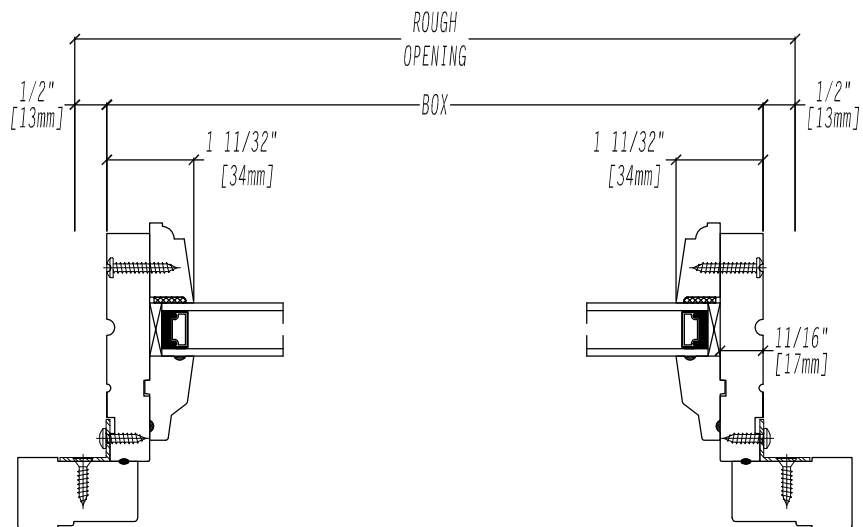
OCTAGON - SIDE JAMB DETAIL

# Octagon

## Section Details - Direct Set



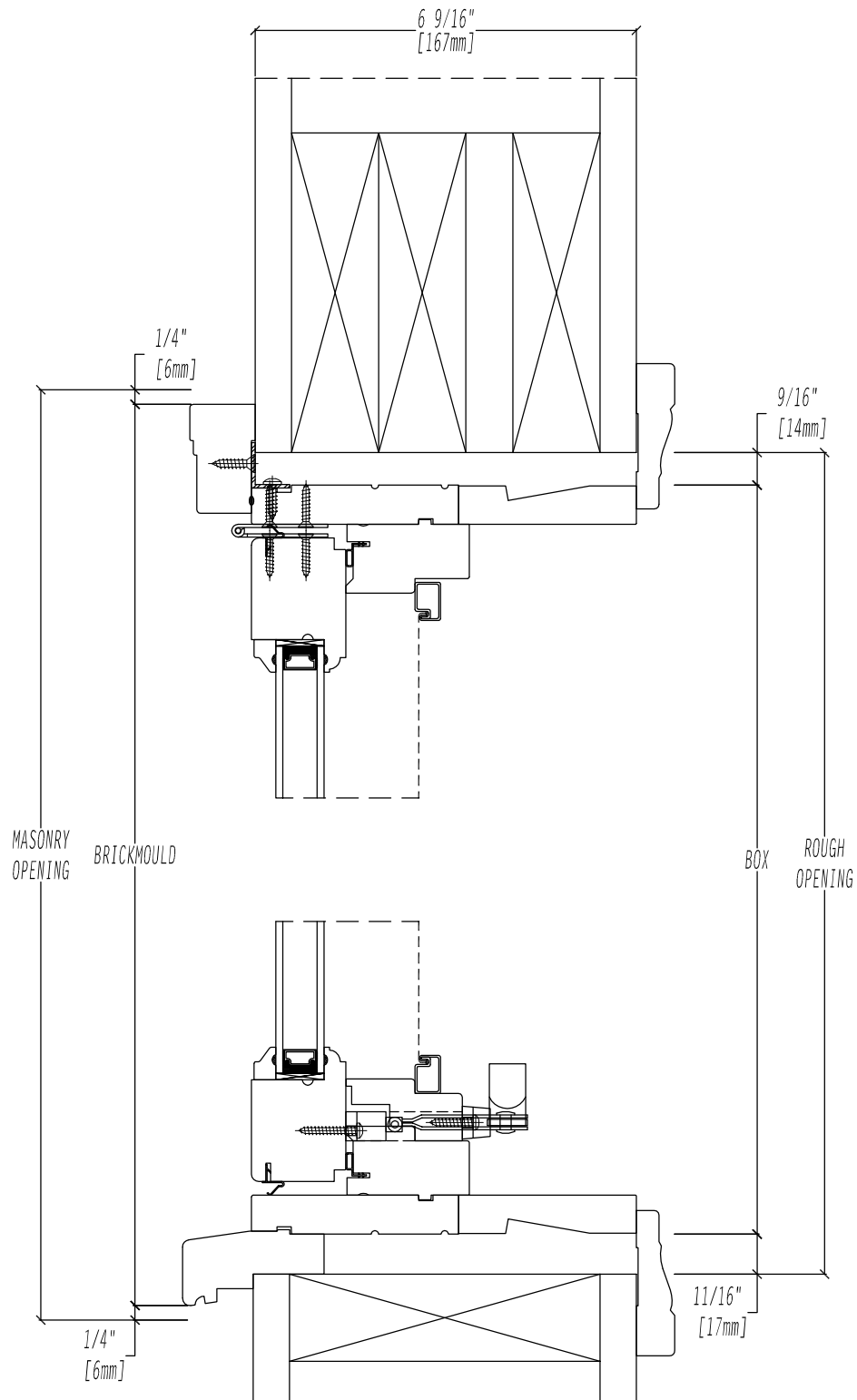
OCTAGON - HEAD & SILL JAMB DETAIL



OCTAGON - SIDE JAMB DETAIL

# Octagon

## Wall Section Detail



OCT-8

2012



# Octagon

## Wall Section Detail

