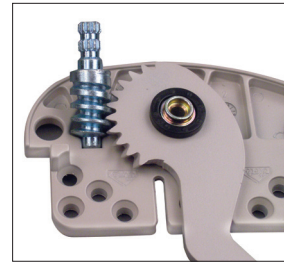
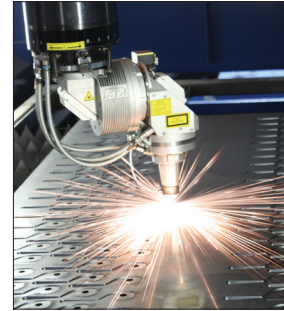


## Casement Window Hardware - Unique Features and Advantages

Roto's X-Drive casement and awning operators feature your choice of 304 Series stainless steel or powder coated steel on all exterior components for unparalleled aesthetic design, North American-made quality, and superior corrosion resistance.

### Roto X-DRIVE Operators

- Stronger dual arm operators used in a vast majority of size ranges
- Performance exceeds standards set by AAMA
- Protected gear drive and sealed operator housing
- Larger gear structure and stronger teeth result in fewer rotations needed to open or close window
- Operator arms cut in North America on state-of-the-art 5-axis lasers



### Optimal Flexibility



- Metal nesting caps (not plastic) available in powder coat and architectural finishes for greater design flexibility

### Roto LB08 - Strongest Locking System on the Market

- Stamped out of rolled wire for superior strength
- Patented adjustable (2.2 mm) mushroom head lock pins prevent lock from disengaging from nylon strikers



**LB08  
Locking System**



### Roto LH15 Lock Handle

- The multi-point system passes cycle testing in excess of 8,000 cycles with a 20lb. handle force.
- Metal (not plastic) available in four powder coat and seven architectural finishes with a direct match to the cover and handle

### Roto X10 Lock Out Handle

- Unique lock-out feature prevents the handle from collapsing during operation
- Lever on backside disengages the locking feature



### Roto HG06 Adjustable Hinge

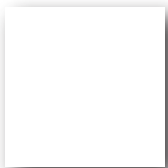
- Provides 4mm of total adjustment which enables ability to realign sash without disconnecting support arms
- Premium hinge to accommodate heaviest sash up to 125 lbs (\*)
- Available in powder-coated steel or 300 Series stainless steel



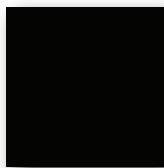
### Roto Sash Ramp

- High quality roller devise system helps prevent sash sag, operational issues and reduces future window problems (e.g., service calls for misaligned sash)

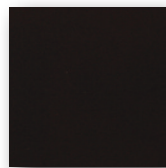
### Roto Metal (not plastic) Cover and Handle Finish Options:



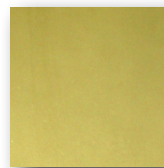
G2 White - 00



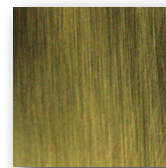
Black - 70



Faux ORB- 71



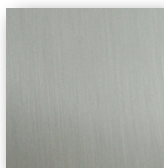
Brass - 31



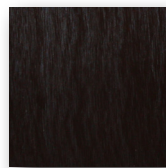
Antique Brass - 33



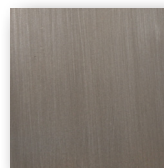
Chrome - 34



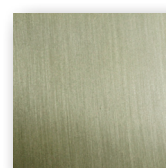
Brushed Chrome - 35



ORB - 36



Pewter - 39



Brushed Nickel - 46

**Note:** Actual colors may vary from the representations and not all products are available in all finishes. Please see your Norwood sales representative for color panel samples or for specific product finish information.