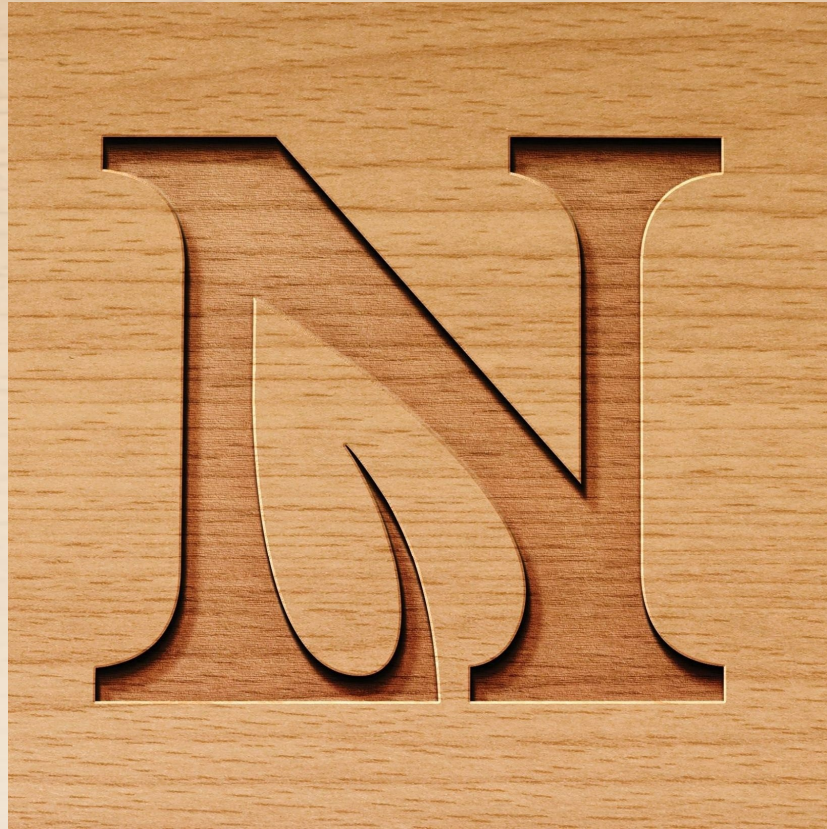


# Norwood Norclad Extruded Aluminum Clad



**NORWOOD**  
WINDOWS & DOORS

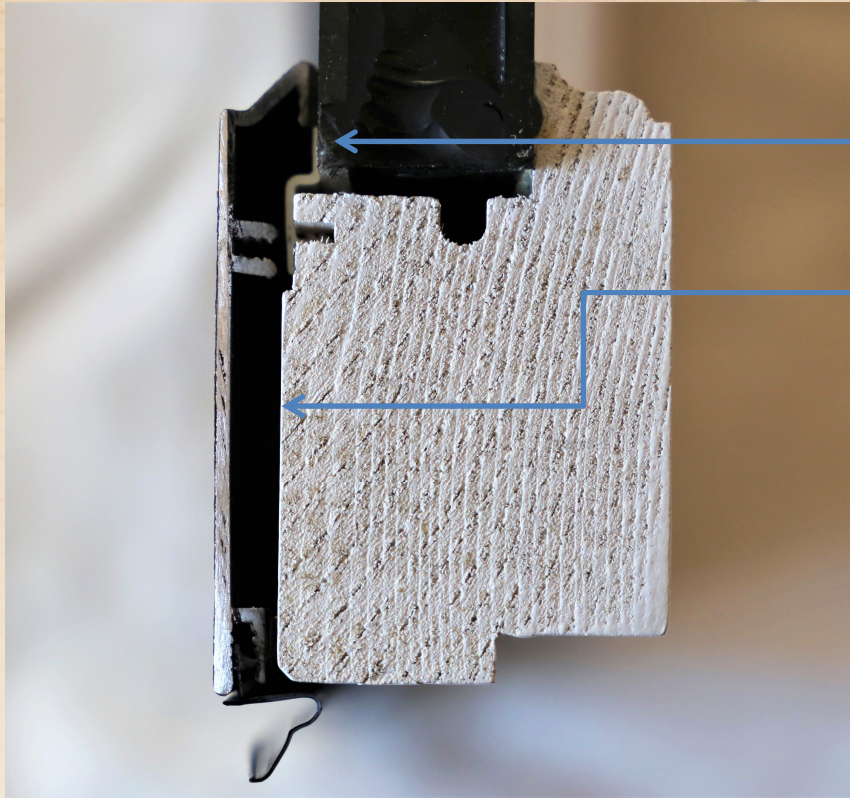
# Feature: Extruded Aluminum Cladding



- .050" (about 1/16") extruded aluminum
- Low maintenance finish
- Provides added structural rigidity
- AAMA 2605 compliant paint finish for enhanced paint fade resistance



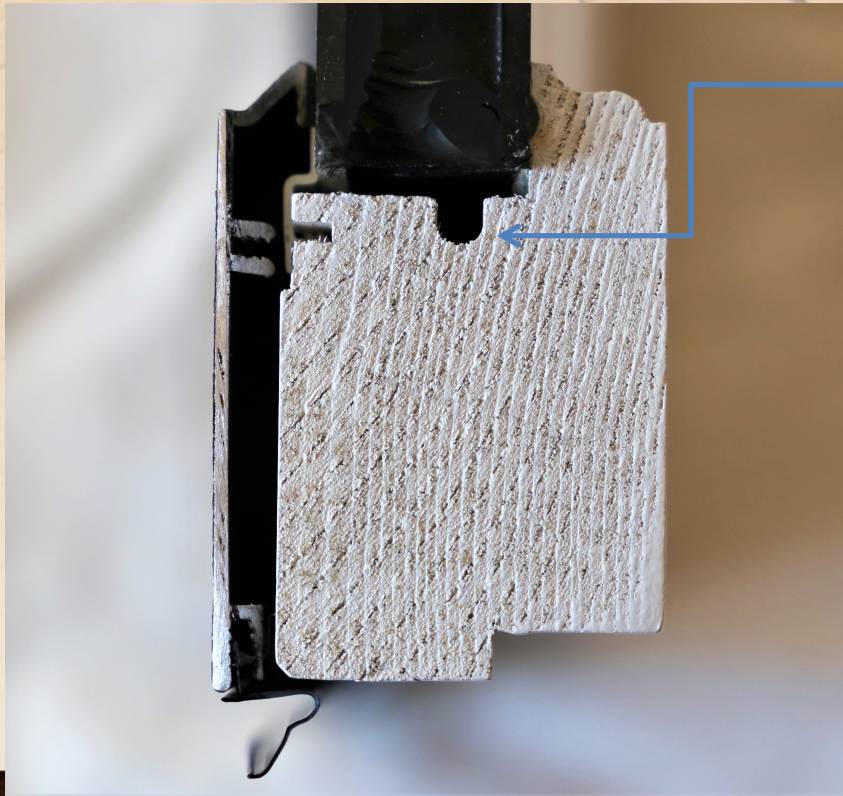
# Feature: Extruded Aluminum Cladding



- No metal-to-glass contact.
- Cladding is set away from wood surface - creates an air space and helps with maintaining thermal performance.



# Venting Channel



- A vitally important feature built into Norwood sash is a venting channel to allow the free movement of air around the sealed unit
- Promotes long sealed unit life by providing ventilation of glazing cavity



# Feature: Extruded Aluminum Cladding



- Extruded Aluminum - sash and frame
- Extruded parts provide a durable, straight and true surface
- Combining roll form sash & extruded frame cladding can result in uneven coloration over time
- **Roll Form** aluminum has a tendency to be 'wavy' and the typical corner detail is an overlap type



# Feature: Superior Aesthetics



- Traditional millwork “stile/rail” sash joinery
- Precise details on sash profiles
- Distinctive architectural detail
- Extruded aluminum SDL bars
- Superb fit and finish. Far exceeds roll form and vinyl



# Glass Options

- Double glazed
- Double glazed with Low-E with or without argon
- Triple glazed
- Triple glazed with Low-E with or without argon
- Triple glazed can mix Low-E coatings on surface 2 & 5
- Triple glazed doubles thermal performance of double glazed, maximises UV protection, improves STC and ultimately can result in more comfort.



## GLASS

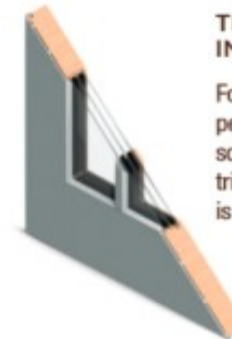
### SO MANY OPTIONS... LET US HELP YOU MAKE THE RIGHT CHOICE.

Norwood features some of the most up-to-date window technology as well as many decorative glazing options, along with low-E argon gas. Let us help you find the best solution for your needs.



#### DOUBLE GLAZE INSULATED

A very popular choice, our double-glazed glass will certainly meet your needs.



#### TRIPLE GLAZE INSULATED

For increased energy performance and soundproofing, triple-glazed glass is the right choice.

**NORWOOD**  
WINDOWS & DOORS



# Decorative Glass Options

We offer a wide variety of decorative glazing options

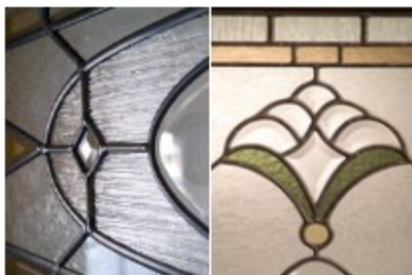
Here are many of the most popular options. If you don't see what you're looking for we'll find it for you.



## Take divided lite detailing to another level with Leaded Lites.

Norwood brings traditional stained glass detailing into the 21st century with authentic style Leaded Lites. Today's version is a high-tech, energy-efficient 'glass sandwich' with continuous glazing and applied Leaded grilles both within the sealed unit and on the exterior. You can request Leaded Lites in any Norwood product.

This design features, Clear Beveled, Cotswald and Glue Chip glass with Patina Lead Caming.



You can even create your own design for us to follow.



Solar Grey, Glue Chip and Baroque glass with Bright Brass and Patina Caming. Silver Caming also available.



**NORWOOD**  
WINDOWS & DOORS

# Norclad Casings & Subsill Options





# Several SDL Choices

## GRILLES & DIVIDED LIGHT

### SIMULATED DIVIDED LIGHT



### WE OFFER MANY INTERIOR AND EXTERIOR GRILL OPTIONS FOR YOU TO CHOOSE FROM

Grilles give windows and doors additional style and architectural interest.

**Don't see what you are looking for?** Then speak to your windows and doors specialist about a Norwood custom solution.

### CLAD EXTERIOR SDL OPTIONS



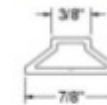
True Putty 5/8"



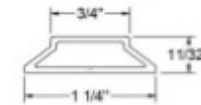
Putty 5/8"



Putty 7/8"



Putty 1-1/4"



### WOOD INTERIOR SDL OPTIONS



Resto 5/8"



Historic 5/8"



Ovalo 5/8"



Heritage 5/8"

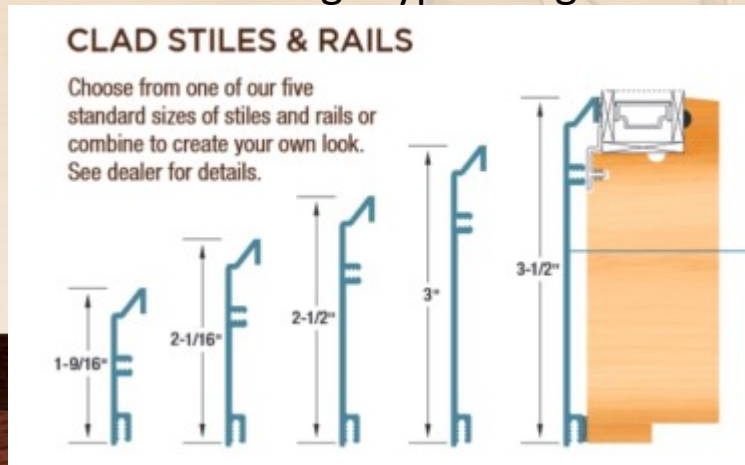


Square 5/8"

**NORWOOD**  
WINDOWS & DOORS

# What makes us better?

- Designed to have the same interior look and feel as our wood products
- The same 5 beautiful interior profile options:
  - Restoration, Historic, Ovalo, Heritage and Square
- Exterior glazing means no interior pin holes, poor joints, or poor fit and finish
- Flexibility when mixing sizes of stiles and rails. Ex, narrow window stiles, wider rails found in heritage type designs

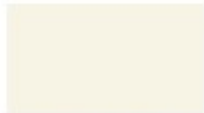


**NORWOOD**  
WINDOWS & DOORS



# Standard AAMA 2605 Colors

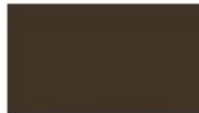
CLAD PAINTS  
EXTERIOR COLORS



DELICATE WHITE



NORCLAD WHITE



SIMARD SABLE



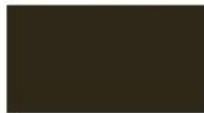
SANDY BEIGE



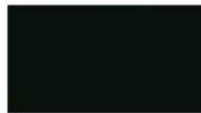
SANDSTONE



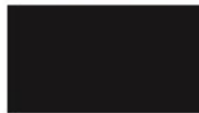
HEATHER'S GREY



BROOKLYN BRONZE



CELTIC BLACK



BLACK PANTHER  
(on order)

Choose from our  
9 standard clad paint  
colors

OR CREATE YOUR OWN PERSONAL  
STYLE WITH OUR CUSTOM PAINT  
COLOR OPTION.

Colors may not be exactly as shown. Please consult your  
Norwood Windows & Doors dealer for actual color chips.



2605 FINISH

Meets AAMA  
(American Architects  
Manufacturers  
Association)  
specifications.

NORWOOD  
WINDOWS & DOORS

# Non-standard AAMA 2605 Colors

- Many additional colors or custom all in AAMA 2605



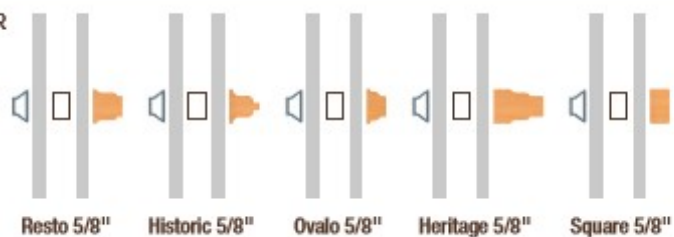


# 5 Interior SDL profiles

Photos of Historic 5/8"



WOOD INTERIOR  
SDL OPTIONS



**NORWOOD**  
WINDOWS & DOORS

# Interior Options

## Bare wood or Primed

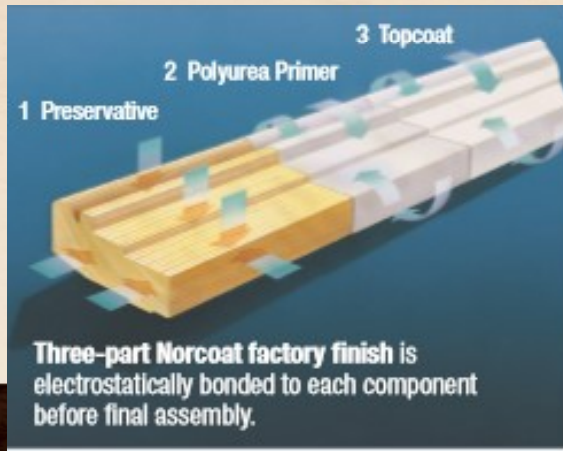
- **Bare Wood**
- **Polyurea Primer**- a specially formulated, high-performance urethane primer (1.5 mil), electrostatically bonds to all sides of the PILT-treated components prior to assembly for maximum coverage.
- This highly-water-repellant layer helps seal the wood and provides a bonding surface for the final topcoat. It is also very flexible in response to the natural expansion and contraction of wood through temperature fluctuations.
- Far superior to water based primers used by others.



# Interior Options

## Norcoat Factory Painted

- **3 Step Process** -A specially formulated, high-performance urethane topcoat (1.5 mil) is applied to all sides of components prior to assembly.
- A multi-step, controlled-spray system to electrostatically bond the topcoat to the primer. This provides complete, consistent coverage to the wood surfaces.
- The topcoat is formulated tough enough to be used as an exterior finish



### Protection for the parts paint can't reach

Our 15-year guarantee factory finish provides beautifully coloured windows and doors without the maintenance hassles. In the three-step process, components are soaked and coated twice before assembly for the highest quality wood finish in the industry.

**DISTINCTIVELY**



**FACTORY**  
FINISH

**NORWOOD**  
WINDOWS & DOORS

# Interior Options

## Norcoat Factory Painted Colors

Norwood offers over 300 standard and custom interior paint colors

48 Interior standard colors shown here

34  
standard shades  
of white

**DISTINCTIVELY**



**WOOD PAINTS**  
INTERIOR COLORS

CHOCOLATE	ANTIQUE WALNUT	MIDWAY BLACK	HARBOUR BLUE	CAPE COD GRAY	BLUE DUSK
CLAY BEIGE	SANDSTONE	CARAMEL	SONOMA GRAPE	SANDSTORM	QUARTZ BEIGE
BLUE ALP	LIGHT BLUE	MAUVE	SALEM GREEN	CACTUS	HARTFORD GREEN
STEEL GRAY	JUST GRAY	CARAMEL HAIR	OFF WHITE	CLOUDY DAY	SEQUOIA DUSK
IVORY TUSK	CREAM BRICK	PARCHMENT YELLOW	COAL BLACK	TAN BEIGE	WOOD CHIP BEIGE
BRICK	BOYSENBERRY	WOODLAND	TAWNY BEIGE	RUSTY BROWN	NUTMEG
SMOKY BLUE	MAJESTIC BLUE	WILLIAMSBURG BLUE	RIVER ROUGE RED	FOREST GREEN	DEEP GREEN
TOUCH OF ROSE	VANILLA WHITE	WAXEN WHITE	DEEP TWILIGHT	TRUFFLE	BUCKSKIN

**NORWOOD**  
WINDOWS & DOORS



# Interior Options

## 5 Step Stain Process

- **Step 1: Surface preparation**
- **Step 2: Stabilization**
- **Step 3: Staining**
- **Step 4: Sealer**
- **Step 5: Applying top coat**

We offer 12 factory and hand applied stain options

NORWOOD IS ONE OF THE FEW MANUFACTURERS TO OFFER FACTORY STAINING OPTIONS.

Our industry-leading stains feature a five-step staining process that involves a specially-formulated sealant, the selected stain, and a protective satin clear coat – all applied to each component before assembly.



Stains are shown on Maple. Consult your Norwood Windows & Doors dealer for samples.

**STAINS**  
INTERIOR COLORS

**NORWOOD**  
WINDOWS & DOORS

# Interior Options

## Wood Species

WE ALSO OFFER A VARIETY OF WOOD SPECIES TO SUIT YOUR DISCRIMINATING SPECIFICATIONS. WE REMAIN ONE OF THE FEW COMPANIES TO OFFER THIS OPTION.

If an exotic wood species is your choice, let us know. We will work our magic.

Paint and stain colors may not be exactly as shown. Please consult your Norwood Windows & Doors dealer for actual color chips.



**NORWOOD**  
WINDOWS & DOORS



# Interior Options

## Screen Options

### SCREENS

**THE NORCLAD SERIES  
FEATURES SEVERAL  
SCREEN STYLES, COLORS  
AND MATERIALS**

No matter what you finally choose,  
we ensure that it's the perfect  
complement to your new window  
and door choice.

**Standard screen bar colors:**  
White and Coppertone

**Also available at an additional cost:**  
Beige, Ivory, Green, Black, Brown, Mill Finish and custom colors

**SWINGING  
SCREENS**



**TRADITIONAL**



**ROLL-UP  
SCREENS**



**ROLL-DOWN  
SCREENS**



**DISTINCTIVELY**



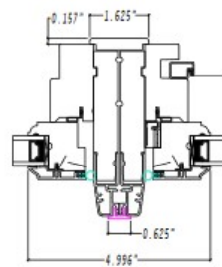
**NORWOOD**  
WINDOWS & DOORS

# Clad Casement Mull Details

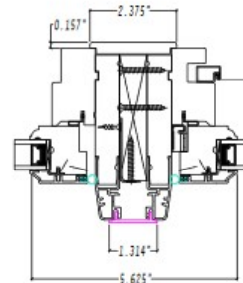
Mull covers sizes

- 0 " tight mull
- 11/16"
- 1 1/8"
- 4"

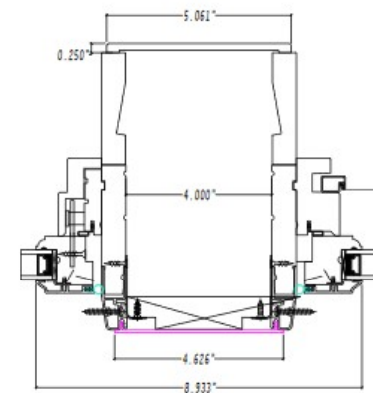
Casement Clad Mull Details - Ovalo Profile



TRANSOM / CASEMENT CLAD MULL  
3 9/16" JAMB



TRANSOM / CASEMENT CLAD MULL  
3 9/16" JAMB C/W FILLER



TRANSOM / CASEMENT CLAD MULL  
6 9/16" JAMB C/W POCKET

**NORWOOD**  
WINDOWS & DOORS

**NORWOOD**  
WINDOWS & DOORS

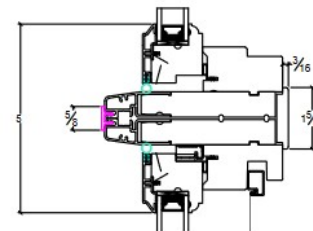


# Clad Casement Stacking Details

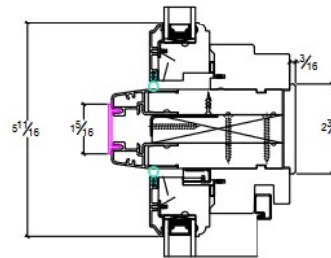
Mull covers sizes

- 0 " tight mull
- 11/16"
- 1 1/8"
- 4"

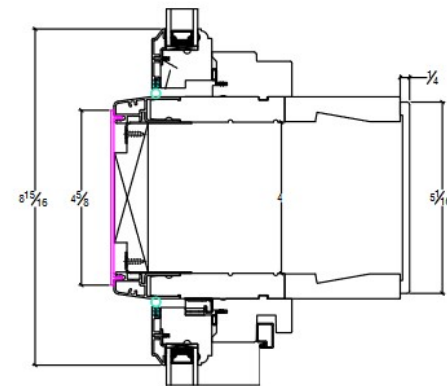
Casement Clad Stack Details - Ovalo Profile



TRANSOM / CASEMENT CLAD STACK  
3 9/16" JAMB



TRANSOM / CASEMENT CLAD STACK  
3 9/16" JAMB C/W FILLER



TRANSOM / CASEMENT CLAD STACK  
6 9/16" JAMB C/W POCKET

**NORWOOD**  
WINDOWS & DOORS

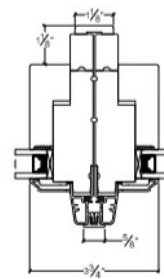
**NORWOOD**  
WINDOWS & DOORS

# Clad Direct Set Mull Details

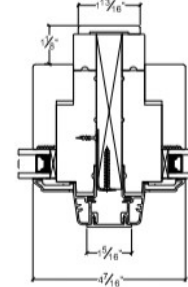
Mull covers sizes

- 0 " tight mull
- 11/16"
- 1 1/8"
- 4"

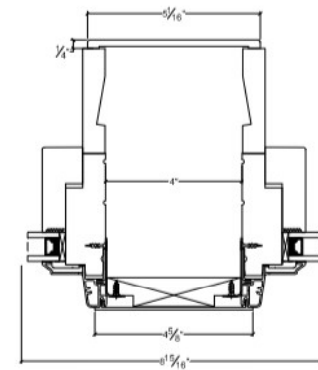
Direct Set Clad Mull Details - Ovalo Profile



DIRECT SET CLAD MULL  
3 9/16" JAMB



DIRECT SET CLAD MULL  
3 9/16" JAMB C/W FILLER



DIRECT SET CLAD MULL  
6 9/16" JAMB C/W POCKET

**NORWOOD**  
WINDOWS & DOORS

**NORWOOD**  
WINDOWS & DOORS

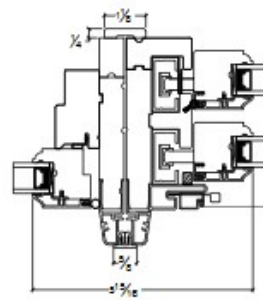


# Clad DH Mull Details

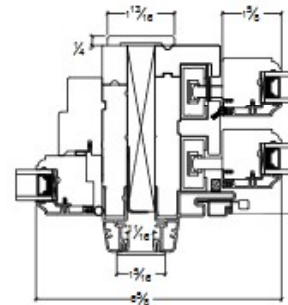
Mull covers sizes

- 0 " tight mull
- 11/16"
- 1 1/8"
- 4"

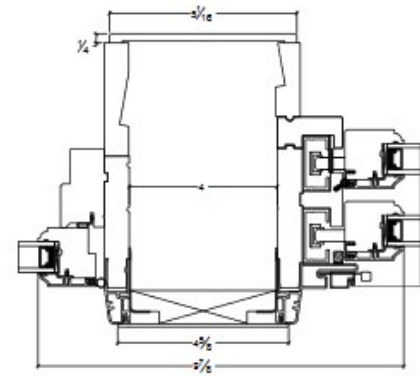
Double Hung - Clad Mulling Details



TRANSOM / DH500 CLAD MULL  
4 9/16" JAMB



TRANSOM / DH500 CLAD MULL  
4 9/16" JAMB c/w FILLER



TRANSOM / DH500 CLAD MULL  
6 9/16" JAMB c/w POCKET

**NORWOOD**  
WINDOWS & DOORS

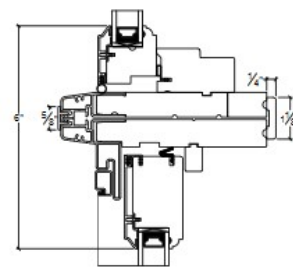
**NORWOOD**  
WINDOWS & DOORS

# Clad DH Stacking Details

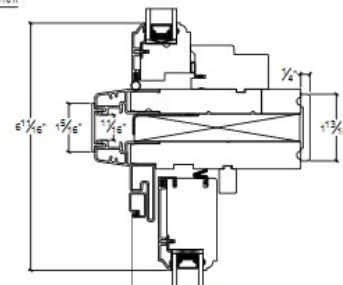
Mull covers sizes

- 0 " tight mull
- 11/16"
- 1 1/8"
- 4"

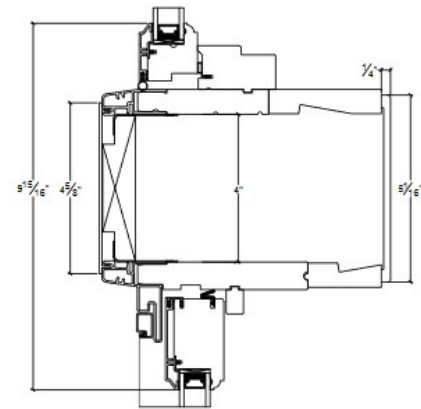
Double Hung - Clad Stacking Details



TRANSOM / DH500 CLAD STACK  
4 9/16" JAMB



TRANSOM / DH500 CLAD STACK  
4 9/16" JAMB C/W FILLER



TRANSOM / DH500 CLAD STACK  
6 9/16" JAMB C/W POCKET

**NORWOOD**  
WINDOWS & DOORS

**NORWOOD**  
WINDOWS & DOORS



# Norwood Norclad Results

- Extruded aluminum clad exterior proven history
- Casing, sill, mull covers and SDL options and expanding...
- Infinite color choices all in AAMA 2605- the best in industry
- Countless interior options
- Numerous glass options
- All manufactured by Norwood's generations of skilled craftspeople.

“ We are Never Ordinary”

**NORWOOD**  
WINDOWS & DOORS

# Case Studies



**NORWOOD**  
WINDOWS & DOORS