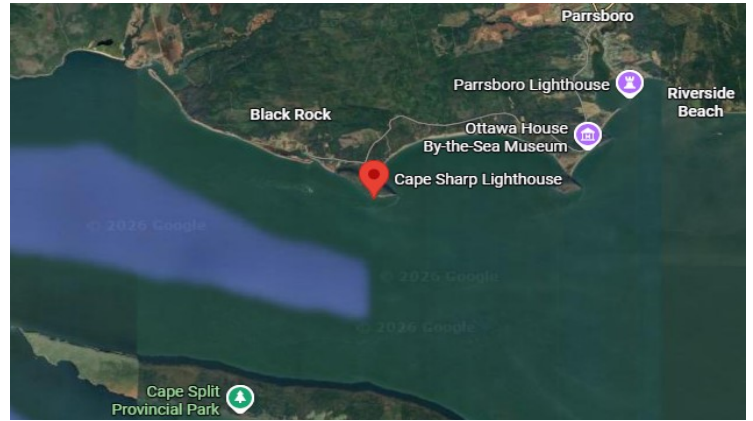




2nd Cape Sharp Lighthouse with fog horn 2008
Credit: Lighthouse Friends



Location of Cape Sharp Lighthouse
Credit: Google Maps

A lighthouse was built in 1886 at Cape Sharp to mark the narrowest point of the Minas Channel before it opens up into the Minas Basin. The first lighthouse was a white wooden tower combined with a lightkeeper's dwelling. Many such lighthouses had an attached dwelling that had the same sloped walls as those of the lighthouse. However at Cape Sharp it looked as if a local two-storey house had been pushed up against the back side of the lighthouse. Despite its boxy look, the dwelling was probably more spacious and comfortable compared to the ones that followed official Department of Marine blueprints, for example, Hortons Bluff.

A 6th order Fresnel lens was installed and in clear weather its red light could be seen 16 km (10 mi) away. Given the significant fog in the area, the lightkeeper got a hand foghorn in 1899 before a fog alarm building was erected in 1904. Surprisingly while most fog signals have been silenced, a fog horn still blows at Cape Sharp today but must be triggered by mariners using channel 65 on their VHF radio.

In 1973 a standalone white wooden pepper-shaker tower was built along with a standalone lightkeeper's house. In 1989 the lighthouse was automated and the house was sold and removed to a new site nearby.



1st Cape Sharp Lighthouse 1933
Credit: Library and Archives Canada



1st Horton Bluff Lighthouse
Credit: Library and Archives Canada