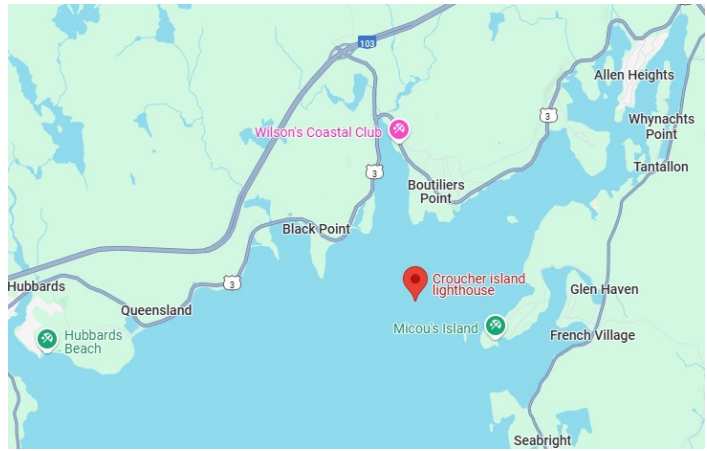


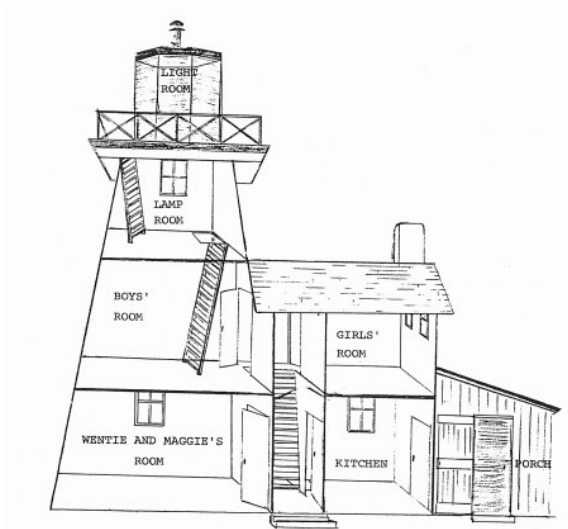


First lightkeeping family at Croucher Island  
Credit: Library and Archives Canada 1890



Location of Croucher Island in St Margaret's Bay  
Credit: Google Map

Croucher Island in the Head of St Margaret's Bay might as well been on the other side of the moon as far as Maggie Boutilier, wife of the second and last lightkeeper on the island, was concerned. It was an hour boat ride to the mainland and over the next 22 years, Maggie didn't get many chances to leave the island. The Croucher Island Lighthouse was built in 1882 and was a combined tower with dwelling that was common at that time. There is only an 1890 photo of the first lightkeeper, George Croucher, and his family who tended the light for 39 years. Maggie on the other hand wrote a book, *Life on Croucher's Island*, describing the joys and hardships of raising a family of six children while acting as backup lightkeeper to her husband, Wentie. While Maggie may have been island-bound, she had many visitors including eleven fishermen who once showed up at 3:30am looking for a warm place and something to eat! Finally in 1944 the lighthouse was automated and Maggie got her wish to live onshore.



Combined lighthouse-dwelling layout  
Credit: *Life on Croucher's Island* by Maggie Boutilier



Maggie and family hard at work splitting logs – 1930s  
Credit: Geraldine (Boutilier) Stevens