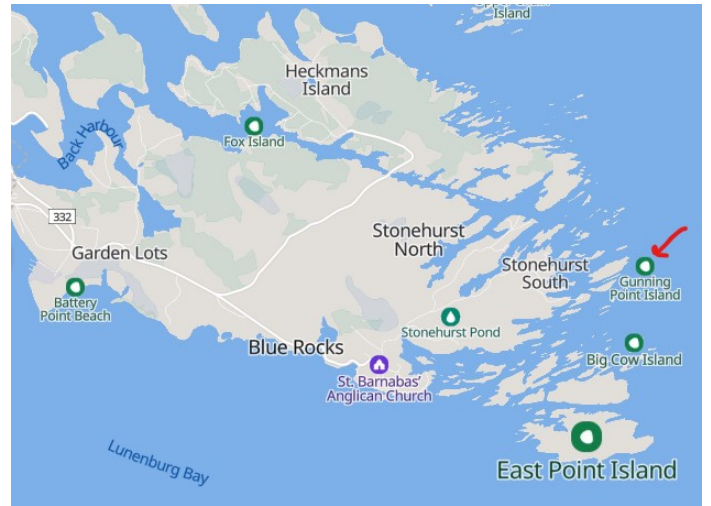


## Gunning Point (aka Tanner Island) Lighthouse June 15 2026



Tanner Island Lighthouse 1933  
Credit: Library and Archives Canada



Location of Gunning Point (aka Tanner) Island  
Credit: Mapcarta

In 1913 a white wooden pepper-shaker style lighthouse was erected on Tanner Island 9 km (5.6 mi) east of Lunenburg. It was a seasonal light operating from April 1 to January 10 when local fishermen were out on the water. Still a 5<sup>th</sup> order Fresnel lens was installed in its lantern to shine a light that could be seen 16 km (10 mi) away.

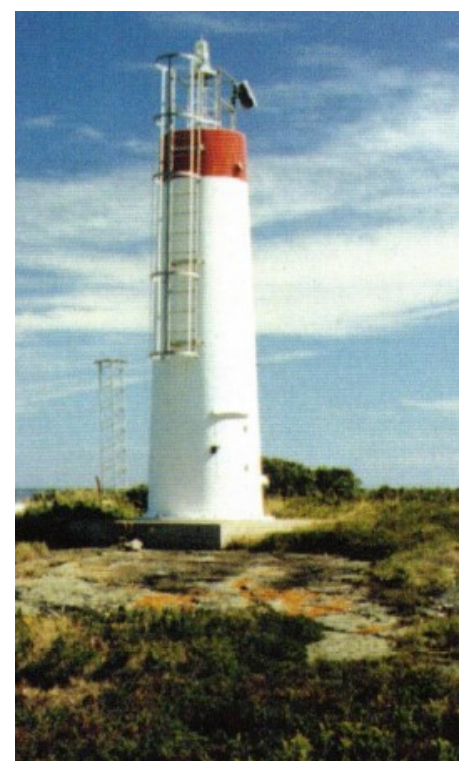
As there was no house on the island, the lightkeeper had to row out in his government-supplied dory at dusk to light up and then row home again. This exercise was repeated at dawn to extinguish the light after which the lightkeeper spent time getting the light ready to shine that evening before rowing home. How did he row across in stormy seas? No one knows.

In 1963 it was decided to unman the lighthouse that then deteriorated over time. It was replaced in 1986 with a narrow fiberglass tower that was topped with a tiny (20 cm; 8 in) plastic airport beacon powered by a solar panel. Not only did Tanner Island get a new type of aid to navigation but also a new name, Gunning Point Island. Does anyone know why?

Today the fiberglass tower is gone and in its place a skeletal steel tower flashes a white light year round. Does anyone know when?



Gunning Point Island (aka Tanner Island)  
Credit: Lighthouse Friends – John Newton



Gunning Point Island Aid to Navigation  
Credit: Rip E Irwin