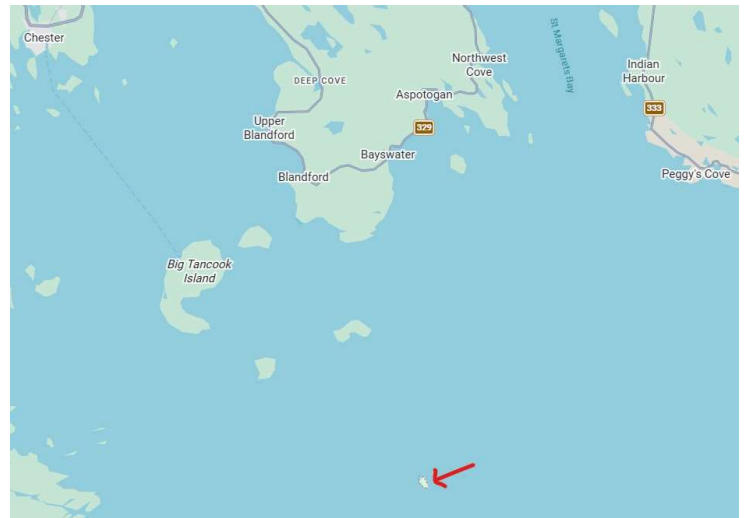




1<sup>st</sup> Pearl Island Lighthouse  
Credit: Library and Archives Canada



Site of Pearl Island  
Credit: Google Maps

More than 3,800 islands surround Nova Scotia and those off the Atlantic coast offered suitable sites for lighthouses of which Pearl Island was one. There in 1873 a tall white pyramid wooden tower was erected to mark the turn left into Mahone Bay and straight ahead to St Margaret's Bay. A dwelling was attached to the lighthouse and was hopefully big enough for the lightkeeper, his spouse and eight children.

Constantly exposed to the Atlantic storms it was necessary to build a new 2-storey square house with a lantern on top in 1929. By 1962 this second lighthouse was in bad enough shape that the lightkeeper's family had gone to live on the mainland. Sadly one evening the solitary lightkeeper disappeared from the island, a mystery to this day.

One year later in 1963 an acetylene light was installed that allowed the lighthouse to be unmanned. Then in 1973 a strange-looking aid to navigation was erected in the form of a tall square tower covered with white aluminum siding and a flat top where a solar powered light sits exposed to the Atlantic elements. Surprisingly it is still working 53 years later.



2<sup>nd</sup> Pearl Island Lighthouse looked like this built same year  
Credit: Nova Scotia Archives



Current Aid to Navigation  
Credit: Lighthouse Friends – Glenn Coltman