

Wolfville Lighthouse on government wharf
Credit: Postcard MF

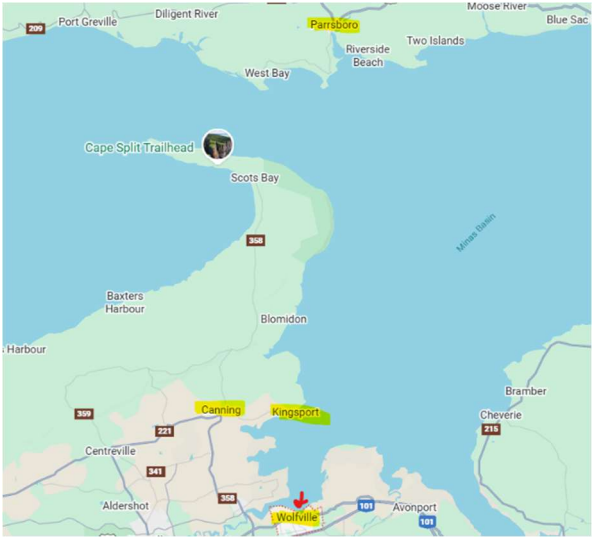


Wolfville Lighthouse in hayfield
Credit: Canadian Coast Guard

On the 2026 bucket list: to visit Wolfville’s Waterfront trail and walk along the dykes towards Grand Pré. Why? There once was a lighthouse that stood on the government wharf. Built in 1902 it was a white pepper-shaker style tower that guided ships down the Cornwallis River to the wharf located at the mouth of Mud Creek.

Fundy tides being extreme in their rise and fall, it would have been impossible to access the wharf twice a day during low tide. Yet barrels of apples from the orchards of the Annapolis Valley were loaded onto vessels here and the ferry, MV Kipawo operated by the Dominion Atlantic Railway, shuttled passengers and goods around the Minas Basin stopping at Kingsport, Parrsboro and Wolfville.

Barely two years in service, the lighthouse was moved off the wharf onto a foundation of piles in a nearby marsh as a 1904 storm had destroyed most of the wharf. Now it became a lighthouse in a hay field similar in look to the one in nearby Canning. Sometime in the 1970s it was burned – reason unknown.



Site of Wolfville in Minas Bay
Credit: Google Maps



Red circle marks lighthouse site;
Red line Dominion Atlantic Railway
Credit: FB post Dan Conlin