

Mini TDGP™

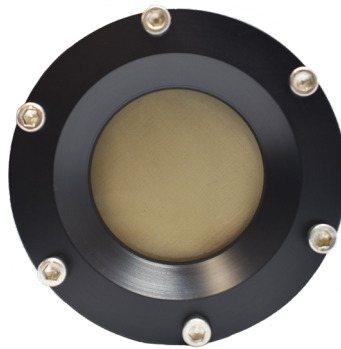
MINI TDGP™ SUBMERSIBLE SENSOR

The Mini TDGP™ measures the total dissolved gas pressure in liquids. It provides accurate TDGP data and is designed for use in aquaculture, dam spillways, groundwater monitoring, and industrial applications.

Unlike other total gas pressure probes, the Mini TDGP™ is not affected by increasing hydrostatic pressure. The sensor's semi-permeable membrane is also biofilm resistant.

The rugged Mini TDGP™ sensor is designed for use in water, oil, and contaminated mixtures. The probe combines an oil resistant membrane with a compact pressure sensor that provides quality TDGP data. The Mini TDGP™ sensor can be used for long term deployments with simple, stable and accurate results.

With periodic membrane cleaning and calibration checks, the Mini TDGP™ requires minimal maintenance.



FEATURES

- High accuracy, 0.1%
- Low power consumption
- Easy integration
- Long-term stability
- Multiple data output formats available
- Lightweight
- Internal data logger and controller with 2GB flash memory

TDGP SENSOR APPLICATIONS

- Monitoring gas super-saturation levels in water
- Monitoring gas pressure in water wells during pumping
- Aquaculture
- Data correction for water samples collected for groundwater and wellwater monitoring
- Monitoring TDGP in transformer fluids

**PRO
OCEANUS**

Dissolved Gas Sensors

Mini TDGP™

SENSOR SPECIFICATIONS

Sensor Performance

TDGP Range	0-2 bar Absolute
*other ranges available	0-5 bar Absolute
	0-14 bar Absolute
Resolution	0.002% of Full Scale
Accuracy	± 0.1% (Temperature compensated over full temperature range)
Equilibration time (t_{63})	Dependent on gas composition

Physical

Length	28 cm (11 in)
Diameter	5.3 cm (2.1 in)
Weight	Air: 0.53 kg (1.2 lbs) Water: -0.06 kg (-0.1 lbs)
Housing Material	Acetal Plastic
Depth Rating	0-600 meters (plastic) up to 0-6000 meters (titanium)
Water Temperature	-2° to 50° C

Electrical

Input voltage	7-24 VDC
Power consumption	0.06 W (5 mA at 12 V)
Data output	Digital: RS-232, ASCII CSV
Sample rate 2 seconds (variable rate with logger/controller)	

Optional Accessories

Titanium housings

Rated up to 6000 m depth

Internal battery power

External battery pack

19, 38 or 76 Amp-hour capacity

Water-pumped head

Reduce biofouling and improve response rate

Mooring cage or frame with instrument brackets

Pigtail Cables with Locking Sleeves

5, 10, 25, 50 meters, or longer



Water-Pumped Head Accessory



Pigtail Cable with Locking Sleeve



Copper Antifouling Shield



Instrument and Battery Mooring Bracket