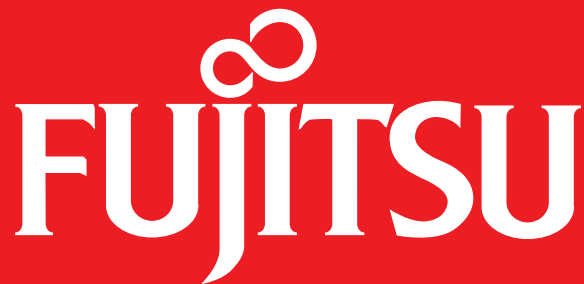


Single Zone **SLIM DUCT**

Systems 09LUAS1D, 12LUAS1D, 18LUAS1D

The Fujitsu logo, featuring a stylized infinity symbol above the word "FUJITSU" in a white serif font, is centered on a red rectangular background.

10 YEAR
FULL
WARRANTY
PARTS & LABOUR*

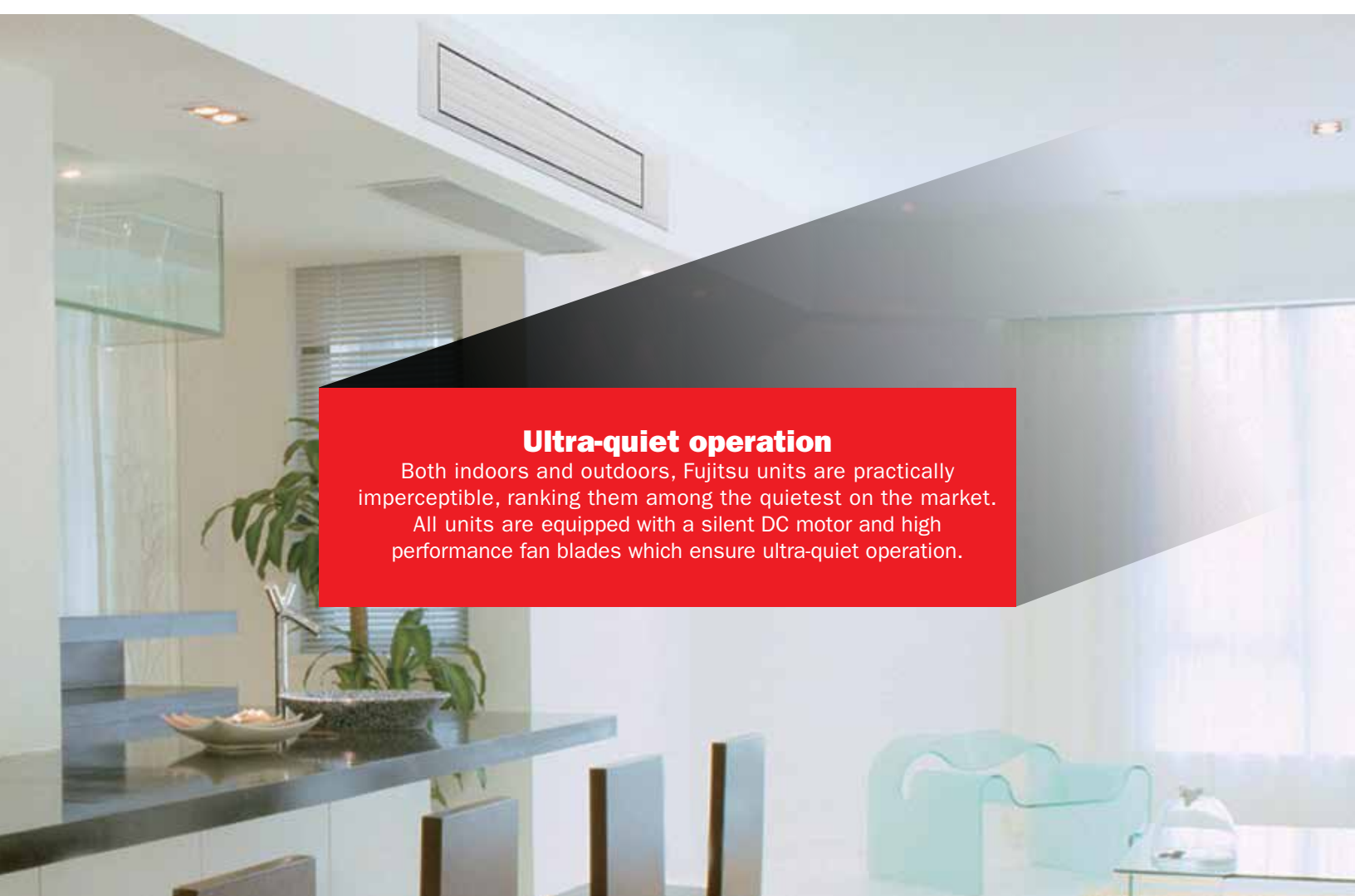
*Limitations may apply

ADVANCED TECHNOLOGY DELIVERING CONSISTENT COMFORT EVERY SEASON OF THE YEAR

Slim duct units are concealed for discreet installation. They can be positioned either horizontally or vertically. Now with improved features!

Our goal: to make the world a more comfortable place

Not all heating systems are created equal. Only units with the right technology can offer you comfort and performance when you really need it. Fujitsu provides innovative comfort products featuring the latest innovations and technologies – ensuring optimal home comfort for your family and friends.



Ultra-quiet operation

Both indoors and outdoors, Fujitsu units are practically imperceptible, ranking them among the quietest on the market. All units are equipped with a silent DC motor and high performance fan blades which ensure ultra-quiet operation.

Reliability you can count on

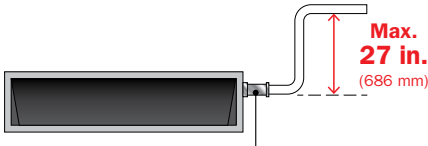
At Fujitsu, reliability means maintaining a consistent track record of product excellence. That's why 99.9% of Fujitsu customers have avoided replacing their system during its lifespan. Fujitsu's quality control standards are backed by four decades of HVAC experience and state-of-the-art testing technologies. This rigorous testing ensures that heating and cooling systems function as intended: with unrivalled efficiency and reliability. When it comes to staying comfortable in harsh conditions, trust Fujitsu to have your back.

Systems designed for every room

Very discreet, this ducted model is the option of choice for superior comfort and space saving for a more refined decor. The built-in drain pump allows for installation of the slim duct unit in a smaller space than traditional units.

Flexible installation

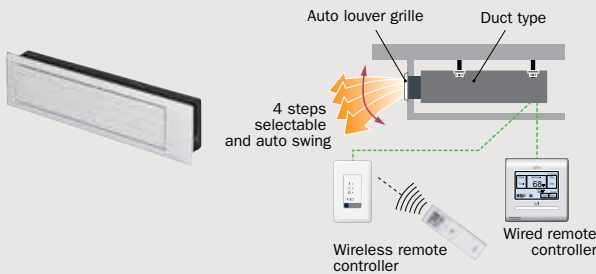
- Compact outdoor unit and extended line set lengths add flexibility and simplifies the installation process.
- Low profile indoor unit measures under 8 in. in height. Designed to be installed in tight spaces with a clearance as low as 10 in.
- Modular indoor unit design allows installation in either horizontal or vertical configuration.
- Field configurable for rear or bottom return. No need for additional accessories.
- Washable filter factory provided with unit.
- High static pressure capability - up to 0.36 inWC - allows this unit to cover many ducted applications.



Drain hose is a standard accessory

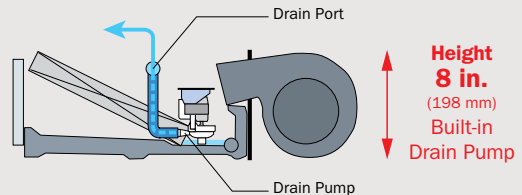
Auto Louver Grille Kit (option)

Optional auto louver grille provides optimum airflow and a clean look that blends with any interior.



Slim Design

The slim design allows installations where ceilings are narrow. Drain hose is a standard accessory. Min. 10" for installation



Product features

- Manage your comfort anytime and from anywhere using FGLAir.*
- Works with Amazon Alexa and Google Home.*
- Compatible with 2-wire remote controllers.
- Revamped controls platform, featuring 2 communication ports, allows simultaneous connection of wired controller, Wi-Fi adapter, and 3rd party devices (such as field supplied auxiliary heater, humidifier, etc.).
- Service menu through UTY-RNRUZ5 simplifies system and sensor monitoring and troubleshooting.

* Wi-Fi module required.






Optional accessories

Wired Remote Controller UTYRNRUZ5	Simple Remote Controller UTYRSRY / UTYRHRY	Wireless LAN Adapter UTYTFXSZ2	IR Receiver Kit UTYLBUM	External Input and Output PCB UTYXCSX + UTZGXE	BACnet Adapter FJACBAC1L
MODBUS Converter UTYVMSX	KNX Converter UTYVKSX	External Switch Controller UTYTERX	Remote Sensor Kit UTYXSZX	Auto Louver Grille Kit UTDGXTAW (09-12k) UTDGXTBW (18k)	External Connection Kit UTYXWZG

Performance & warranty

Fujitsu heat pumps are designed to last and deliver unmatched performance year after year. This is why Fujitsu equipment is backed by one of the best warranties in the industry. Not only that, your Fujitsu dealer is supported by The Master Group, the largest, independently owned HVAC-R distributor in Canada with a 70 year history of providing extensive inventory, exceptional customer service, and unmatched technical expertise.

Model			09LUAS1D 				12LUAS1D 				18LUAS1D 				
			Indoor ADUH09LUAS1	Supply duct Flange	Return Duct	Outdoor AOUH09LUAS1	Indoor ADUH12LUAS1	Supply duct Flange	Return Duct	Outdoor AOUH12LUAS1	Indoor ADUH18LUAS1	Supply duct Flange	Return Duct	Outdoor AOUH18LUAS1	
Performance															
Nominal	Cooling	BTU/h	9,000				12,000				17,100				
Min.-Max.			3,100-11,000				3,100-13,600				3,100-20,100				
Nominal	Heating		12,000				16,000				21,600				
Min.-Max.			3,100-16,000				3,100-19,400				3,100-25,600				
SEER			20.0				20.2				20.2				
HSPF			11.7				11.5				11.4				
EER			13.6				12.8				12.5				
Operating Range	Cooling	°F (°C)	14~115 (-10~46)				14~115 (-10~46)				14~115 (-10~46)				
	Heating		-5~75 (-21~24)				-5~75 (-21~24)				-5~75 (-21~24)				
Moisture Removal	Pt./h (l/h)		1.5 (.07)				2.7 (1.3)				4.2 (2.0)				
Fan (Cooling Mode)															
Air Circulation	Hi	CFM (m³/h)	353 (600)				383 (650)				553 (940)				
	Medium		324 (550)				353 (600)				518 (880)				
	Low		294 (500)				324 (550)				482 (820)				
	Quiet		265 (450)				283 (480)				441 (750)				
Fan Speed Stage				4+auto				4+auto				4+auto			
Sound															
Indoor Sound Level (Clg/Htg)	Hi	dB(A)	28/28				29/29				32/32				
	Medium		27/26				28/28				30/30				
	Low		26/25				27/27				29/29				
	Quiet		25/24				26/24				27/27				
Outdoor Sound Level	Clg/Htg		44/48				48/49				52/55				
Electrical															
Voltage/Frequency/Phase			208/230V~60HZ				208/230V~60HZ				208/230V~60HZ				
Circuit Breaker			15				15				20				
Current Rated/Max	Cooling	Amps	3.3/6.8				4.2/9.8				6.1/11.8				
	Heating		4.5/9.3				5.8/11.3				7.6/14.8				
Power Use Rated/Max	Cooling	kW	0.66/1.05				0.94/2.06				1.37/2.05				
	Heating		0.89/1.89				1.30/1.79				1.71/2.57				
Size & Weight															
Net Weight		lbs (kg)	37 (17)	—	—	70 (32)	37 (17)	—	—	84 (38)	44 (20)	—	—	86 (39)	
Dimensions	Height	in (mm)	7 13/16 (198)	5 15/16 (151)	6 7/8 (175)	21 5/16 (542)	7 13/16 (198)	5 15/16 (151)	6 7/8 (175)	24 7/8 (632)	7 13/16 (198)	5 15/16 (151)	6 7/8 (175)	24 7/8 (632)	
	Width		27 9/16 (700)	25 9/16 (650)	22 5/8 (575)	31 7/16 (799)	27 9/16 (700)	25 9/16 (650)	22 5/8 (575)	31 7/16 (799)	35 7/16 (900)	33 7/16 (850)	30 1/2 (775)	31 7/16 (799)	
	Depth		24 7/16 (620)	3/4 (19)	3/4 Flat (19 Flat)	11 7/16 (290)	24 7/16 (620)	3/4 (19)	3/4 Flat (19 Flat)	11 7/16 (290)	24 7/16 (620)	3/4 (19)	3/4 Flat (19 Flat)	11 7/16 (290)	
Refrigerant			R410A				R410A				R410A				
Additional Data															
Static Pressure in. W. C.			0 ~ 0.36				0 ~ 0.36				0 ~ 0.36				
Air Filter			Washable				Washable				Washable				
Minimum Lineset Length			16 (5)				16 (5)				16 (5)				
Maximum Lineset Length			66 (20) (pre-charge: 49')				66 (20) (pre-charge: 49')				98 (30) (pre-charge: 66')				
Max. Vertical Diff.			49 (15)				49 (15)				49 (15)				
Piping Connection Liquid/Gas			1/4 / 3/8 (6.35 / 9.52)				1/4 / 3/8 (6.35 / 9.52)				1/4 / 1/2 (6.35 / 12.70)				

Note: Figures are based on 230 Volts.



Authorized dealer



The Fujitsu logo is a registered trademark of Fujitsu Limited. AIRSTAGE logo and name is a trademark of Fujitsu General America, Inc. Other company and product names mentioned herein may be registered trademarks, trademarks or trade names of their respective owners. Specifications and design are subject to change without notice for future improvement. Actual products colors may be different from the colors shown in this printed material.

Proper sizing and installation of equipment is critical to achieve optimal performance. Split system air conditioners and heat pumps must be matched with appropriate coil components to meet ENERGY STAR criteria. Ask your contractor for details or visit www.energystar.gov.

10 YEAR FULL WARRANTY PARTS & LABOUR*
*Limitations may apply

The best complete warranty available on the market is offered on each residential Fujitsu system. To accept this offer, the qualifying product must be registered online via contractors.fujitsugeneral.com/registration/dsp_step_one.cfm within 60 days of the installation date. Otherwise, the manufacturer's standard 5-year parts and 7-year compressor warranty applies, no labor.

